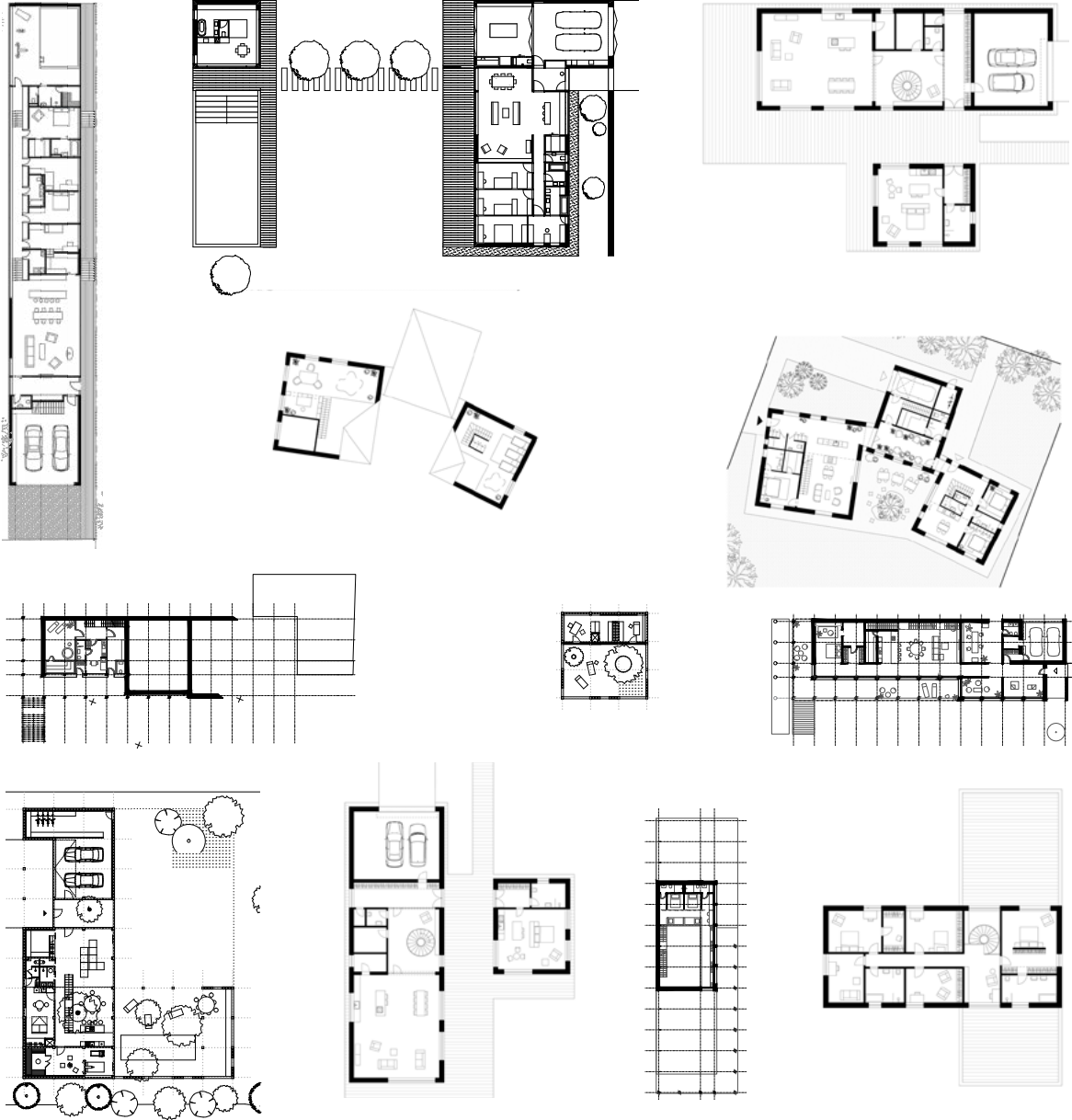


FAMILY HOUSES WORKSHOP



PRAGUE 2022

Supported by the Faculty of Architecture CTU in Prague

Teachers_

Kusý Martin
Paňák Pavol
Stempel Ján
Tesař Jan Jakub

Students STU Bratislava_

Branišovičová Paulína
Darnadiová Michaela
Jukl Peter
Koligyerová Edina
Konček Mikuláš
Lacho Jakub
Magdolenová Jana
Myjavcová Tatiana
Poláková Zora

Students CTU Prague_

Bombova Lucia
Dvořáková Ester Maria
Krinitzky Natalia
Malinská Petra
Mašek Viktor
Šimůnková Barbora
Šulcová Dita
Tesař Prokop
Vaněk Matěj

Opponency_

Kaprálová Gabriela
Ullman Pavel

25th - 30th September
Prague 2022

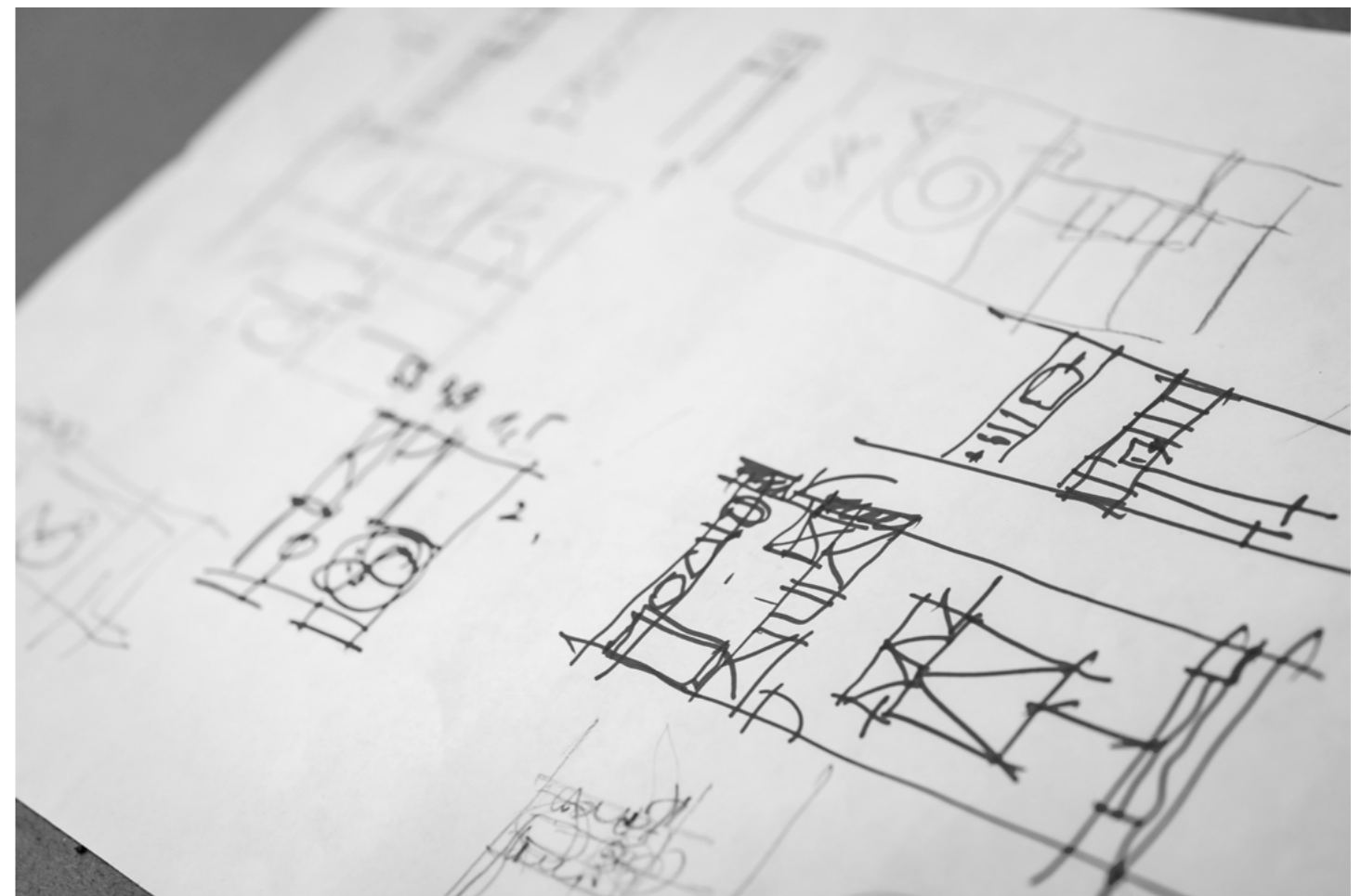


Family houses excursion



Family houses excursion



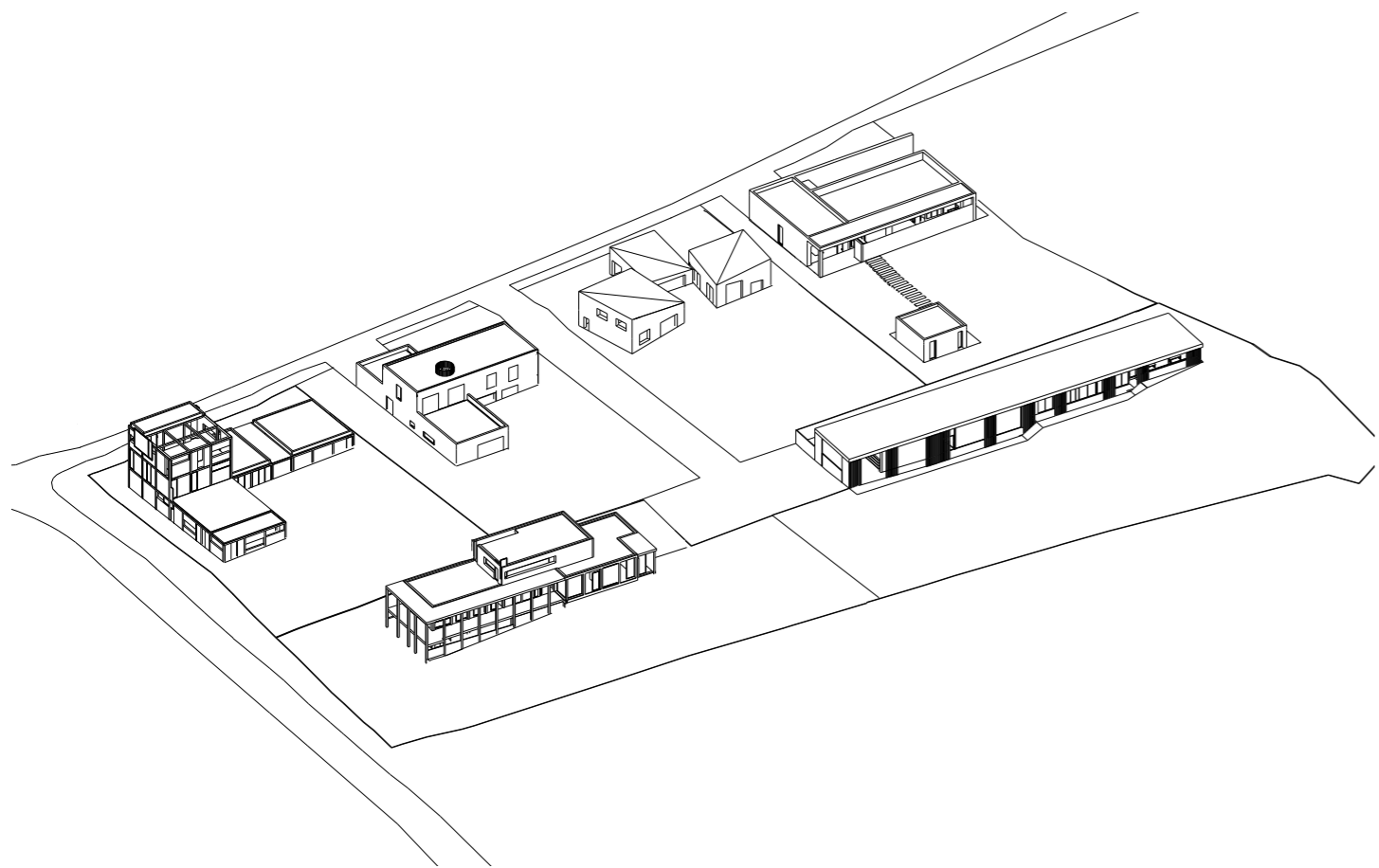
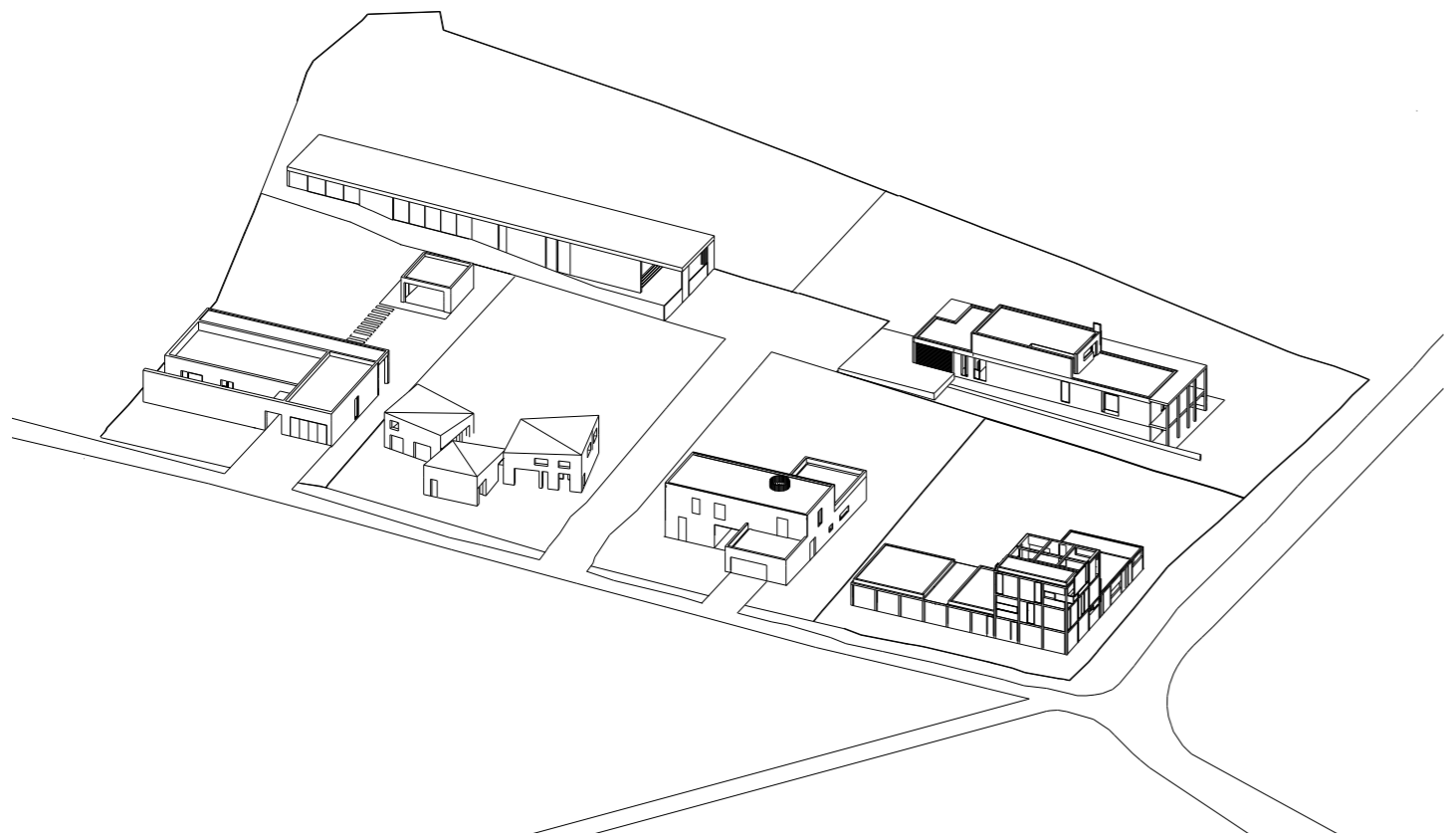




Villas in Jevany

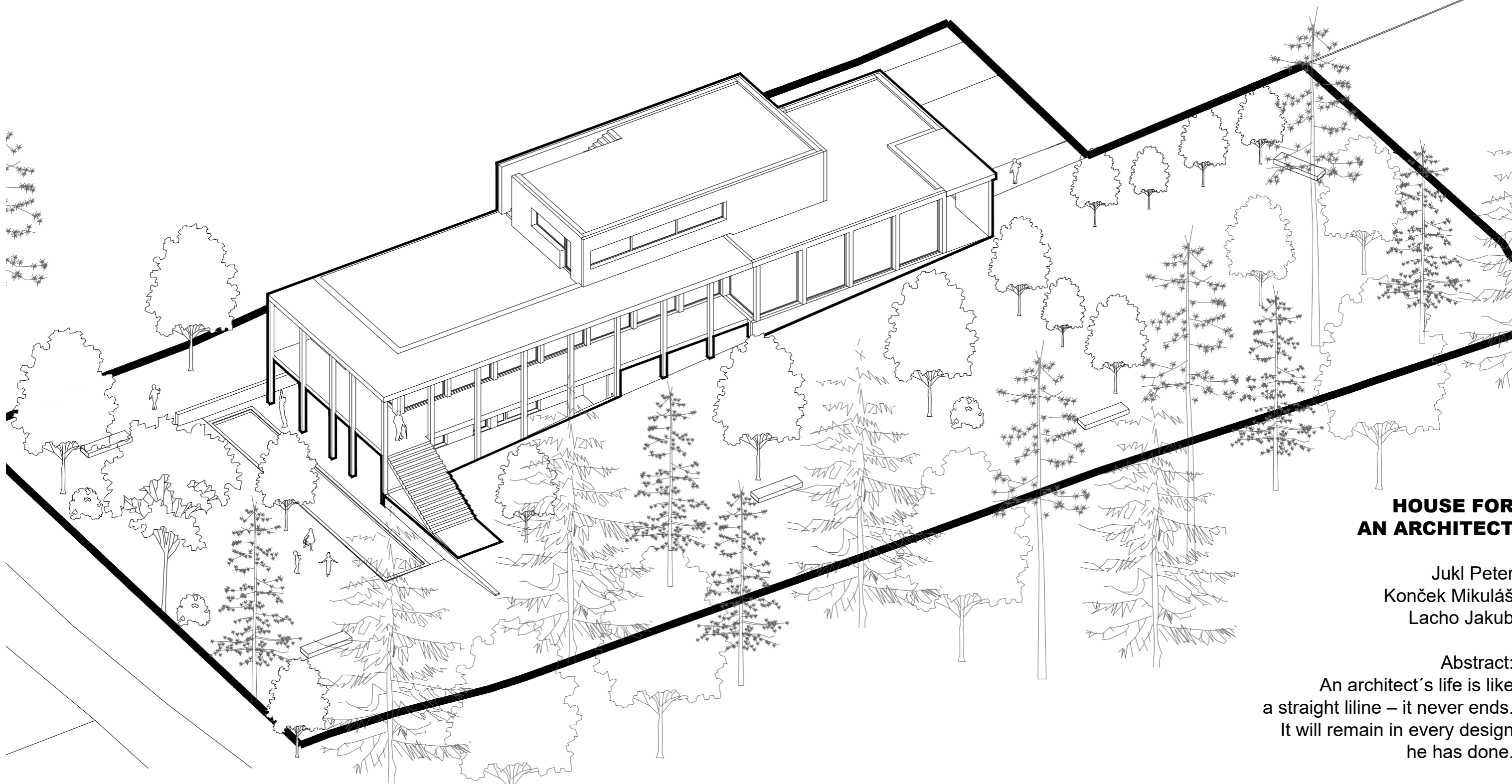
Six family villas designed by six groups in six days for six exceptional clients





axonometry

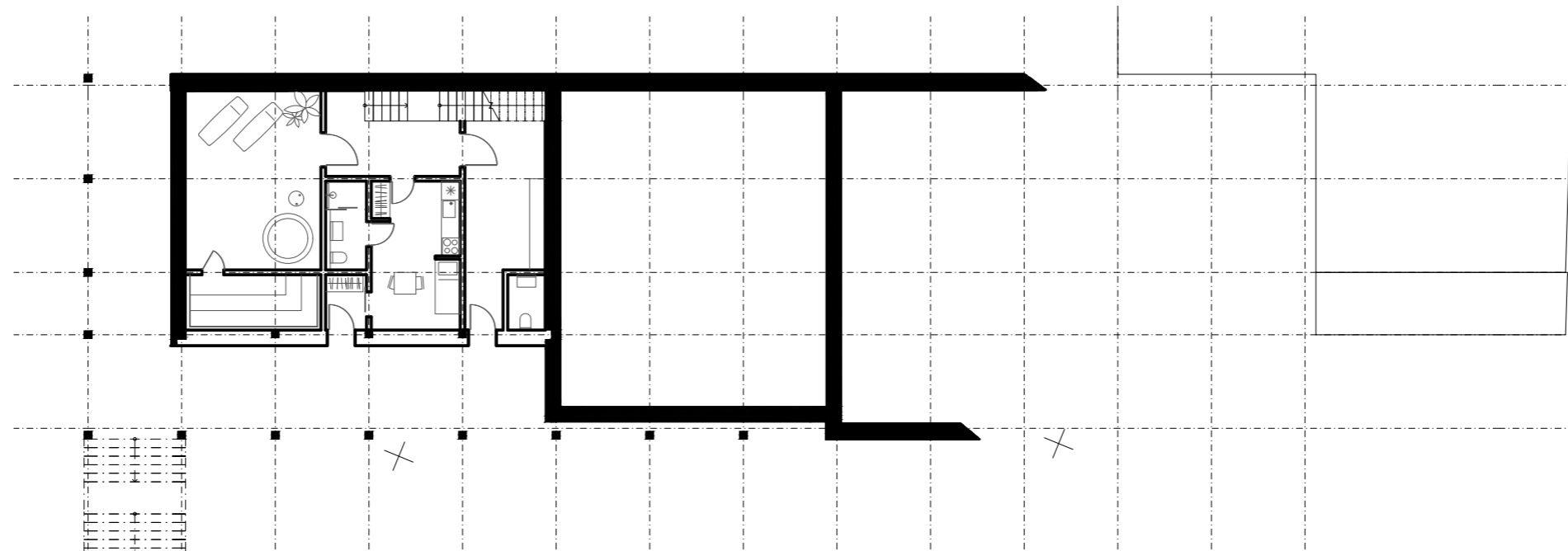
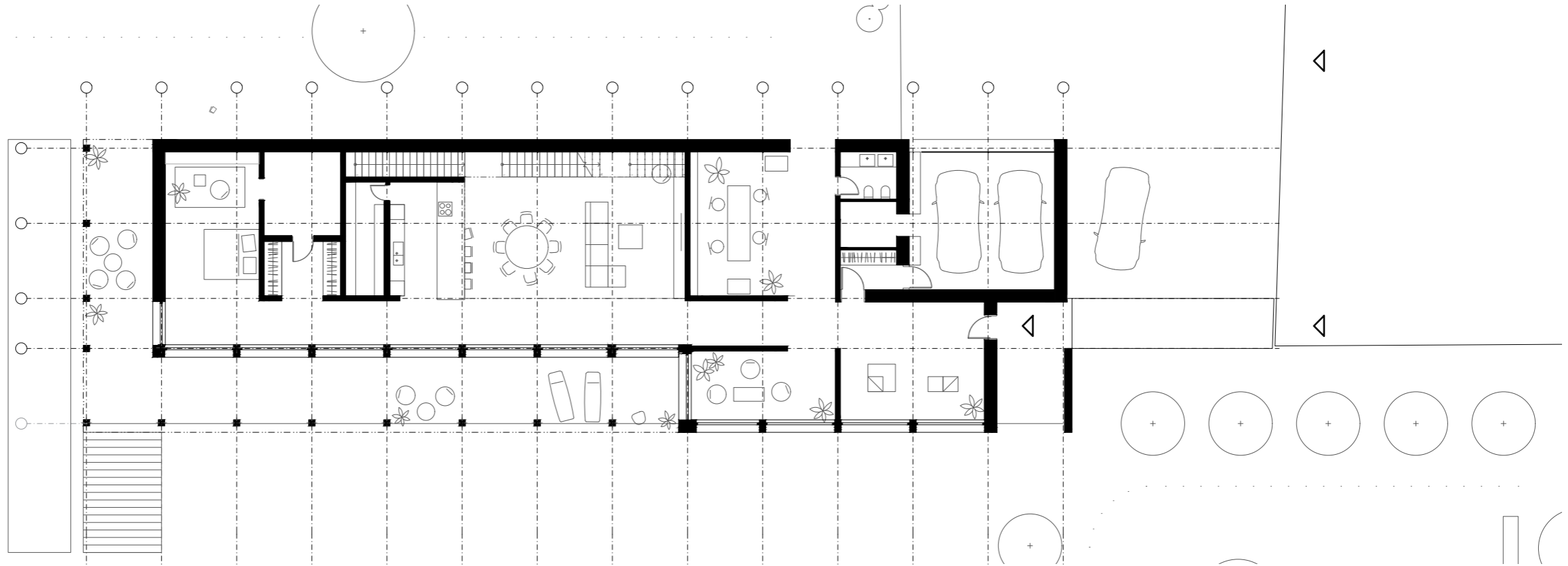
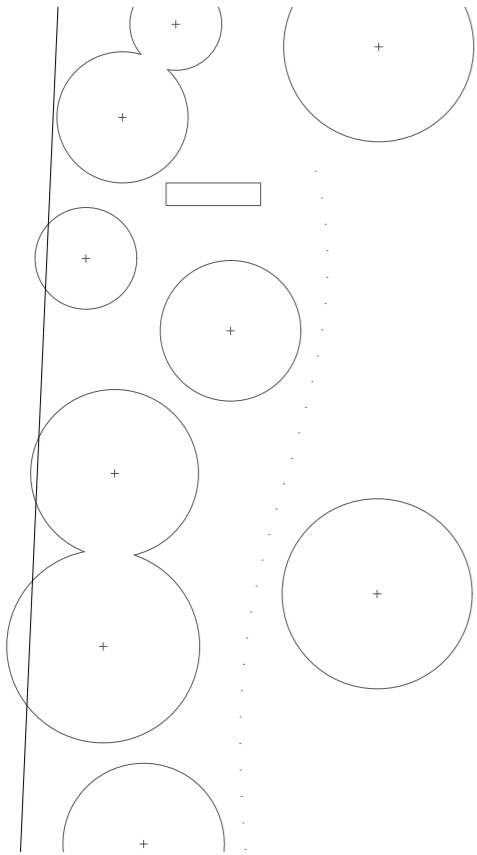
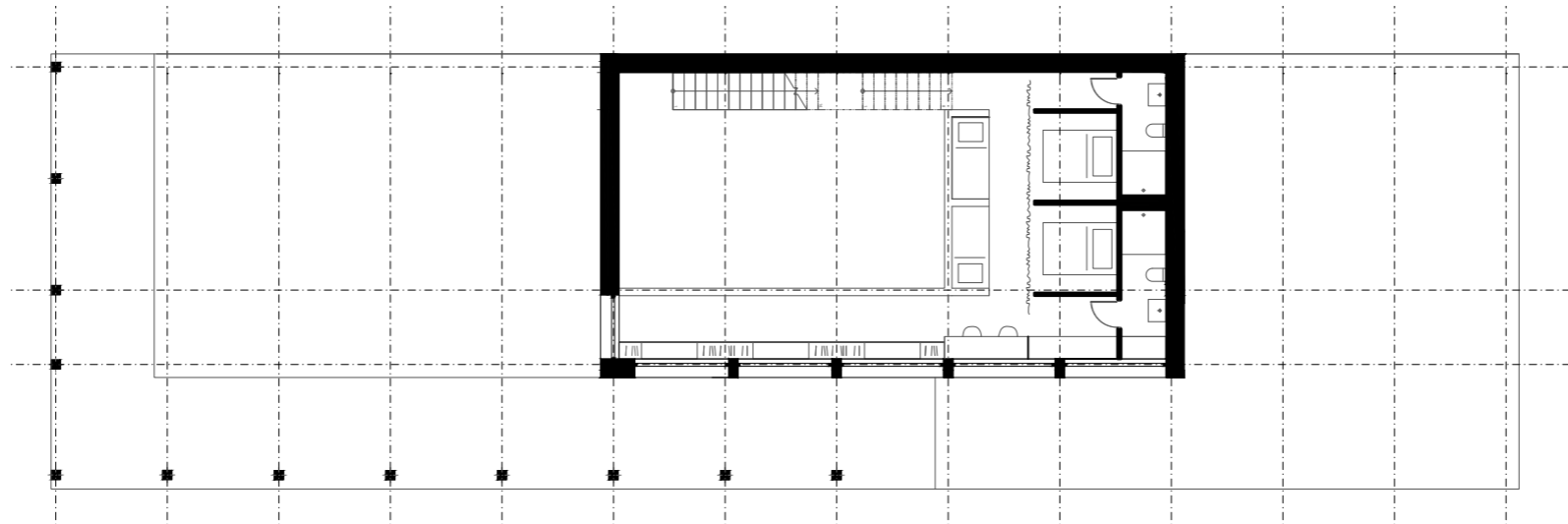
schwarzplan 1:2000



**HOUSE FOR
AN ARCHITECT**

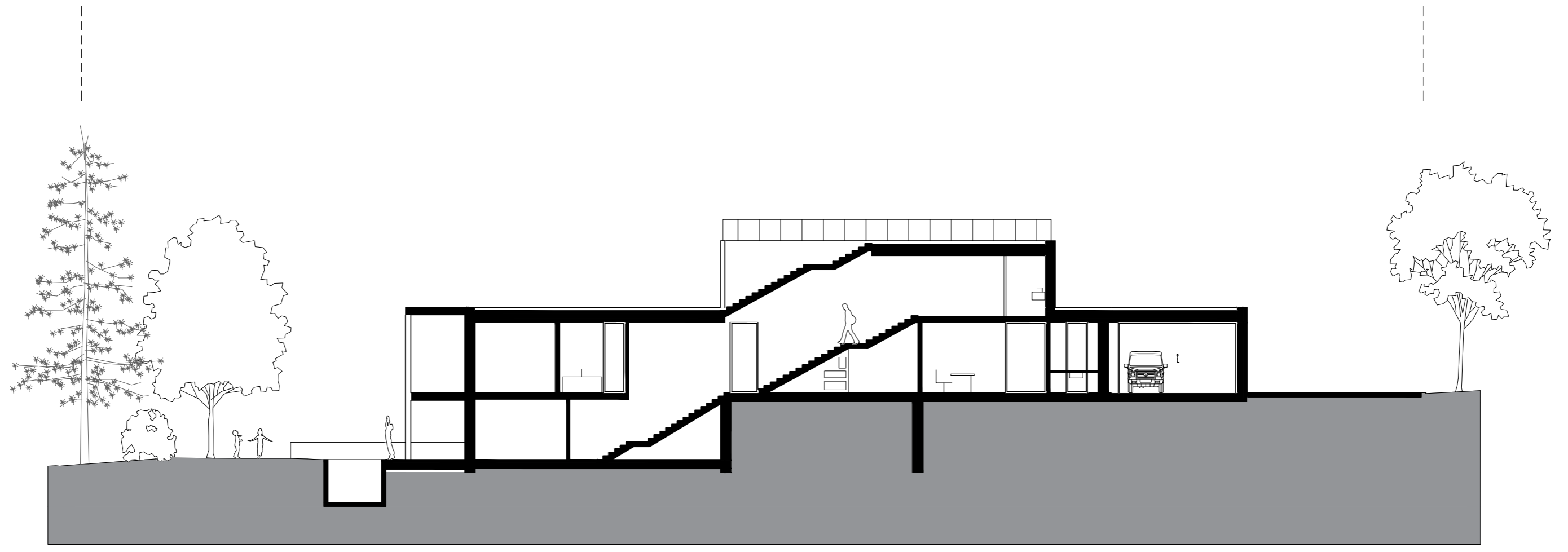
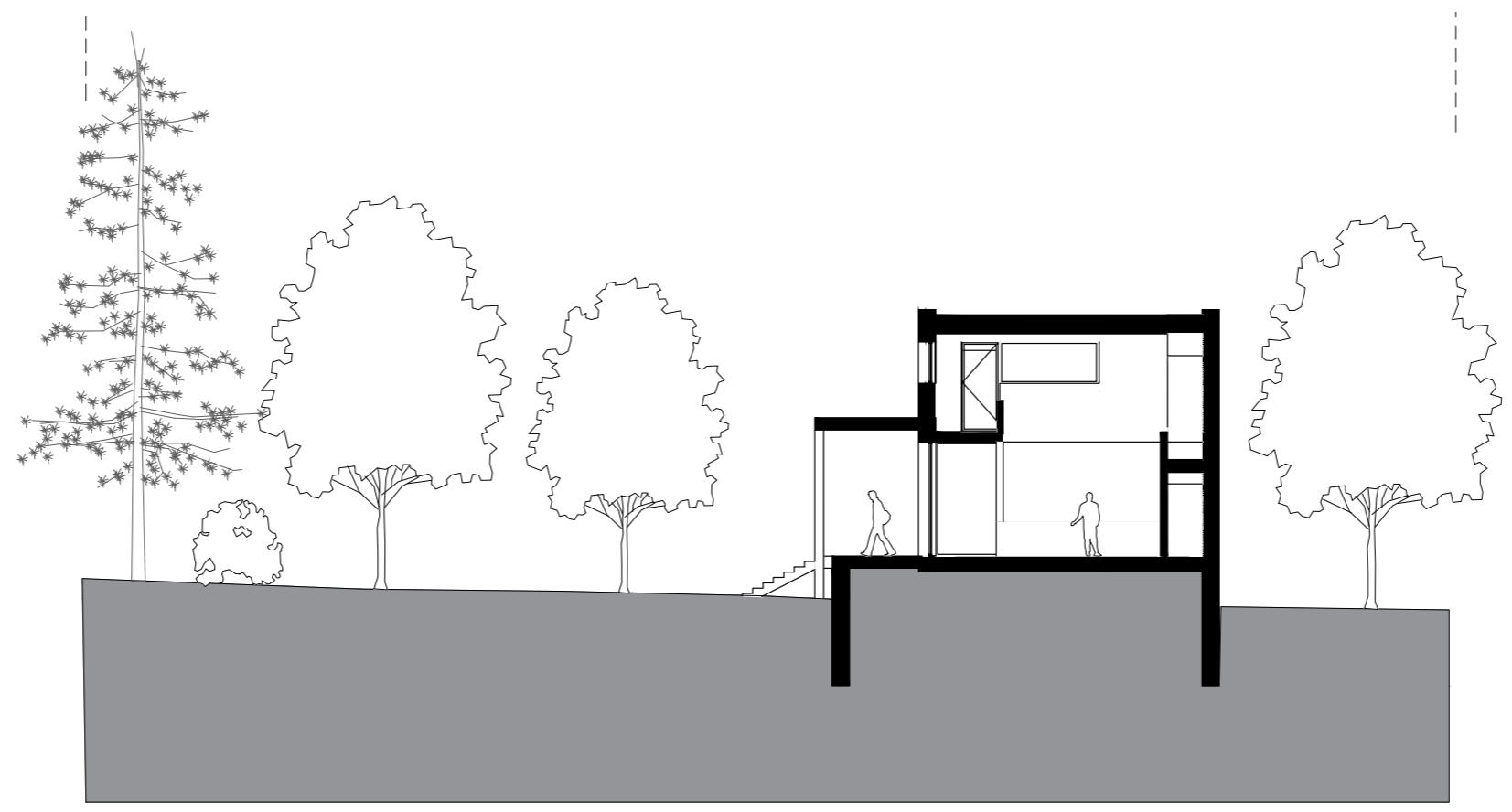
Jukl Peter
Konček Mikuláš
Lacho Jakub

Abstract:
An architect's life is like
a straight line – it never ends.
It will remain in every design
he has done.



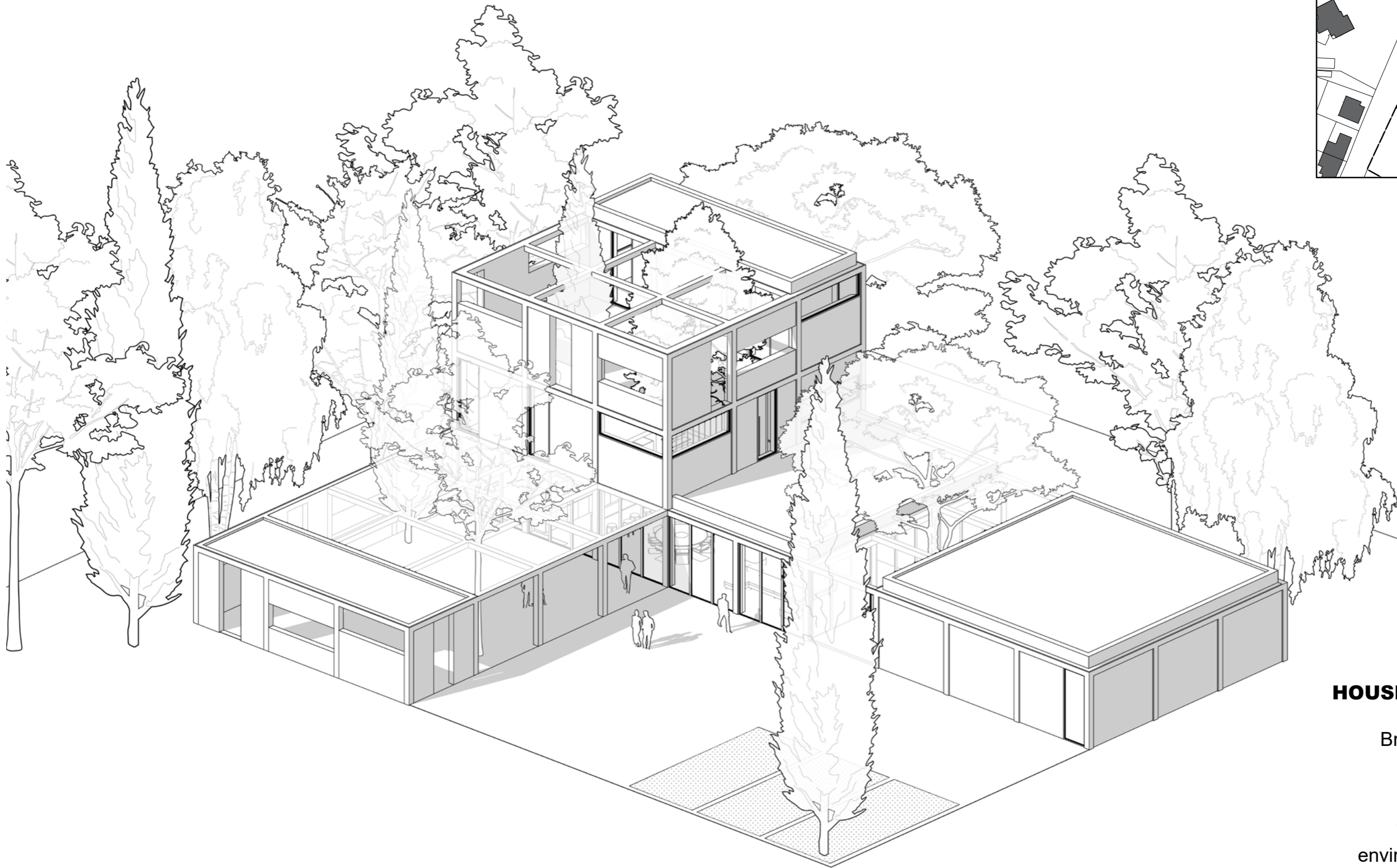
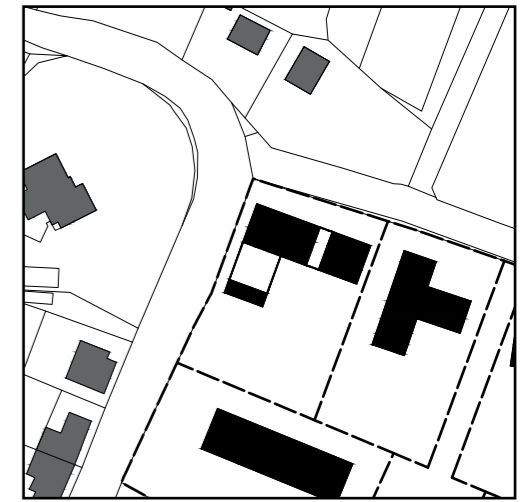
0 1 10





0 1 10

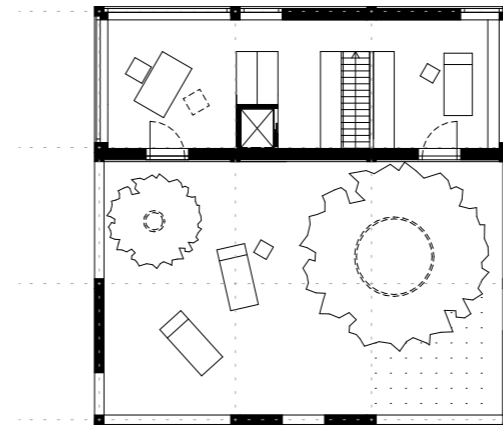
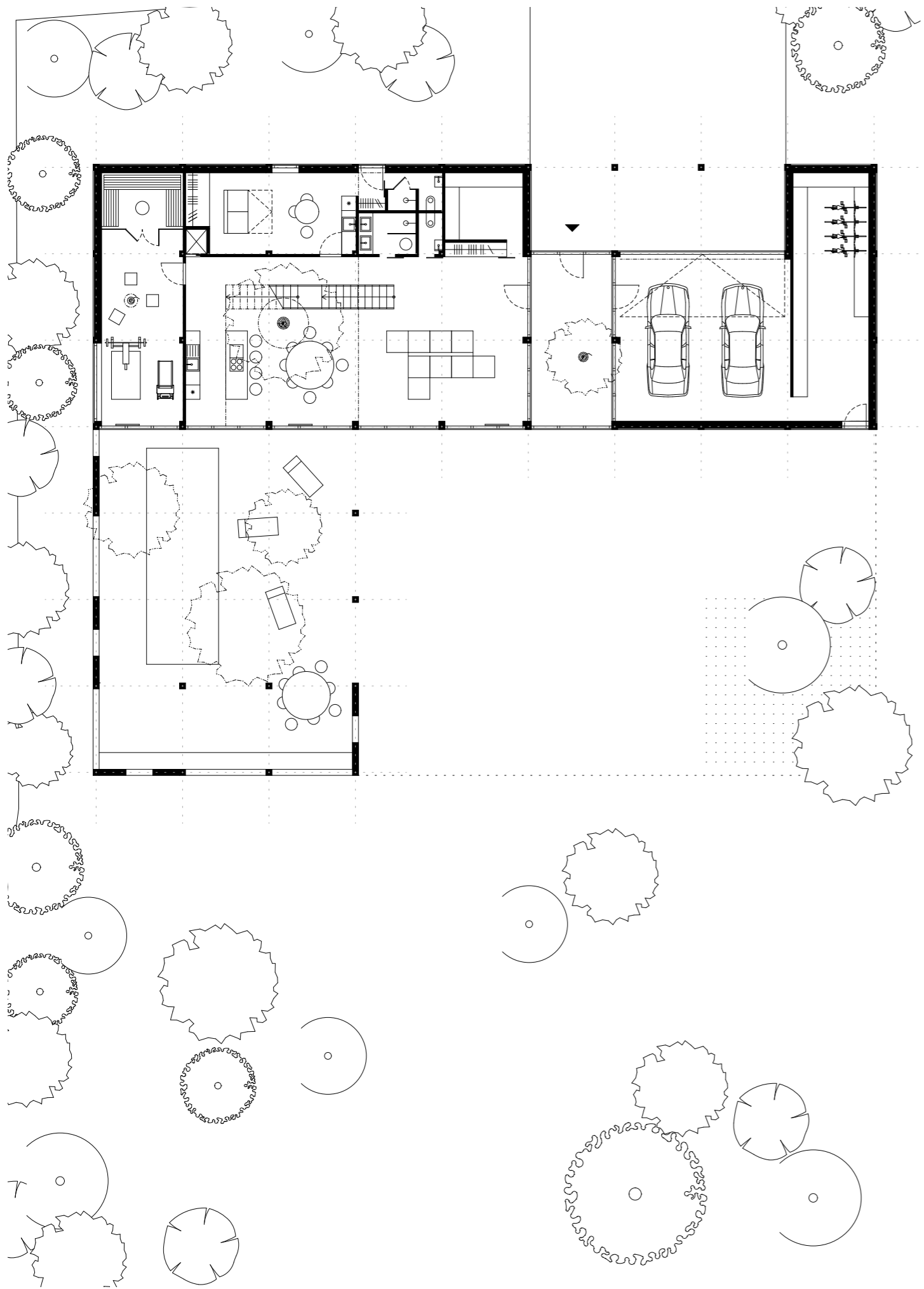
sections 1:200



HOUSE FOR A WRITER

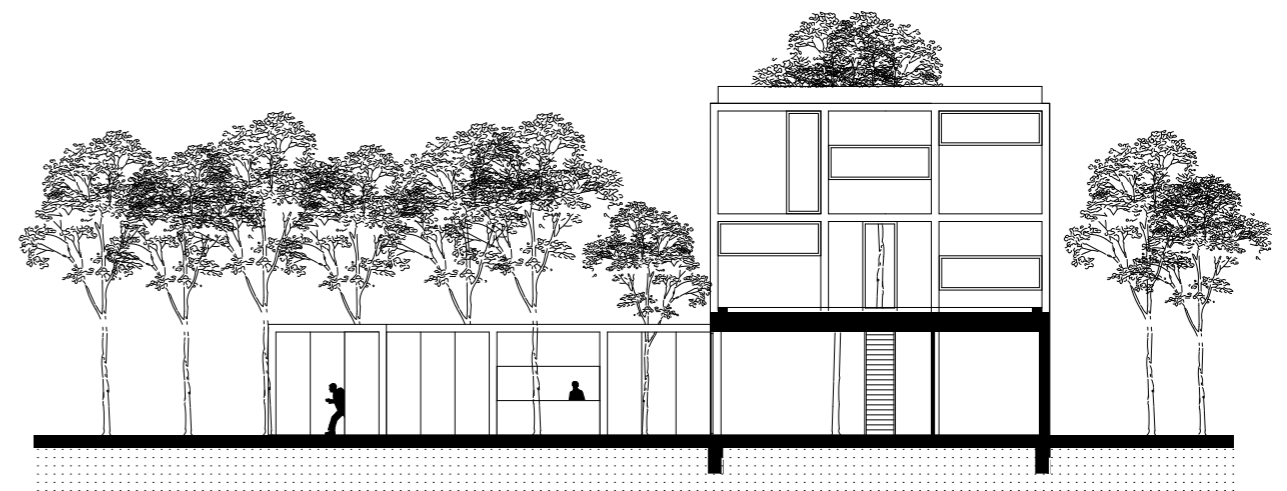
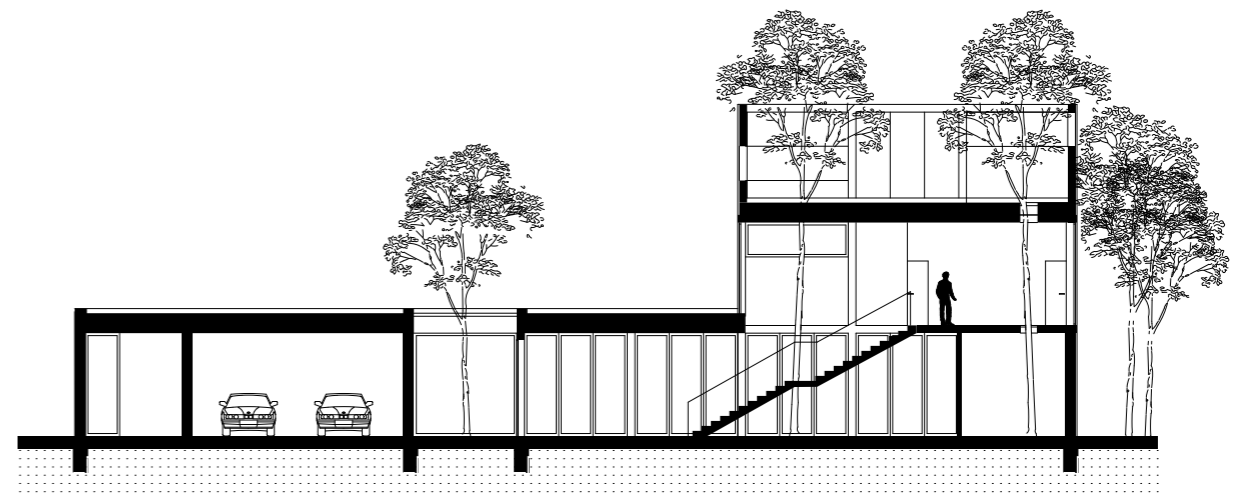
Branišovičová Paulína
Koligyerová Edina
Poláková Zora

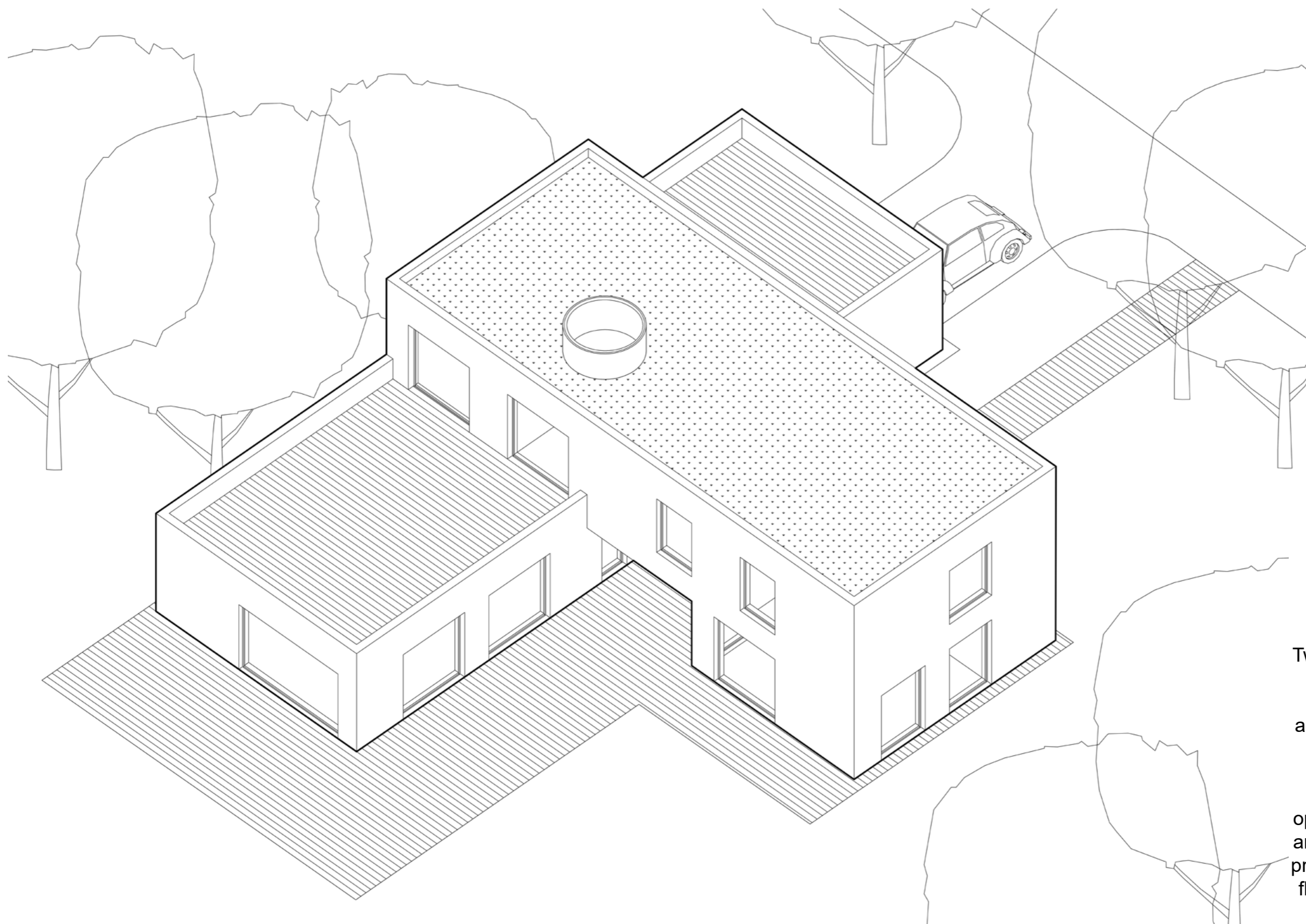
We enter the natural environment with a strict, regular figure. The main means of expression of the building is the recognized supporting structure, which creates a rectangular grid of the facade.



0 1 10



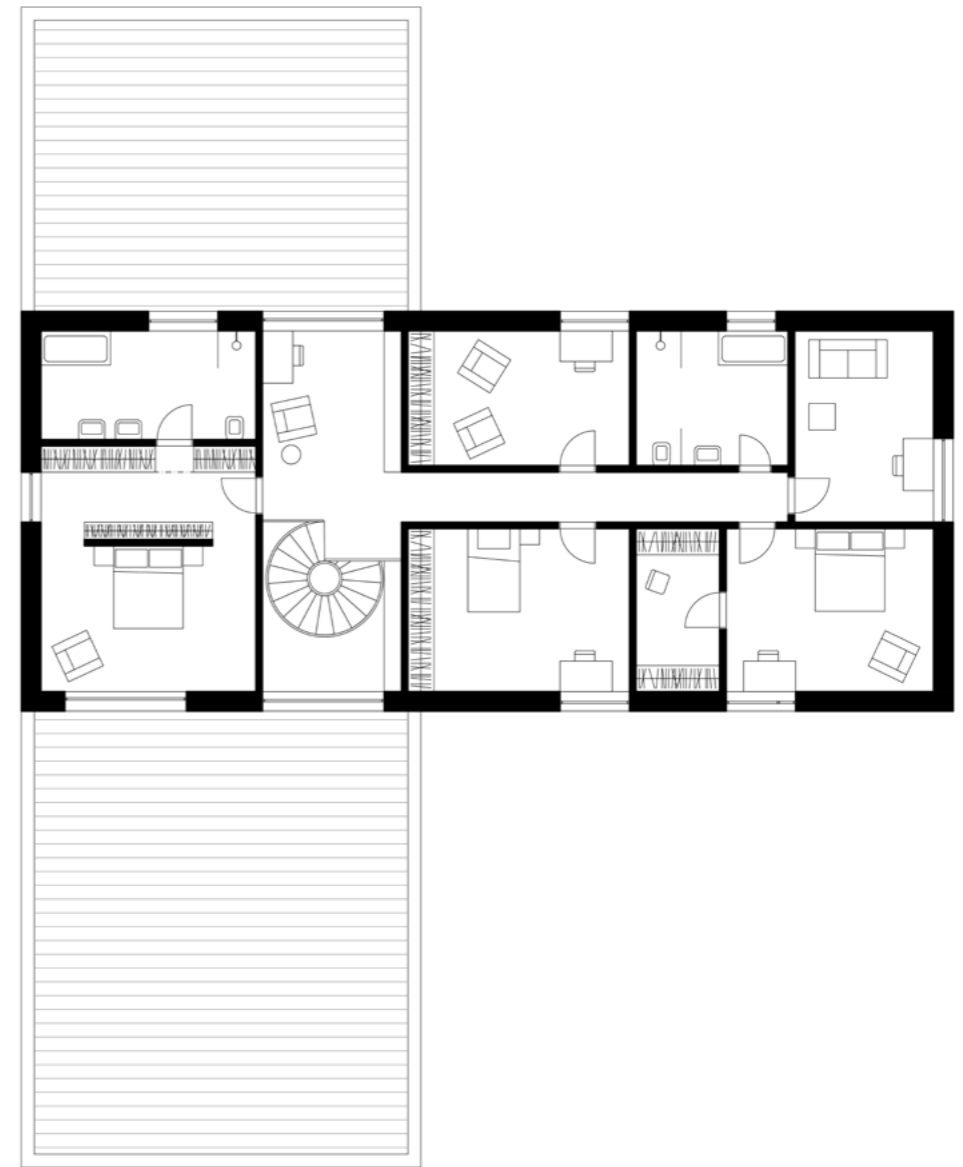
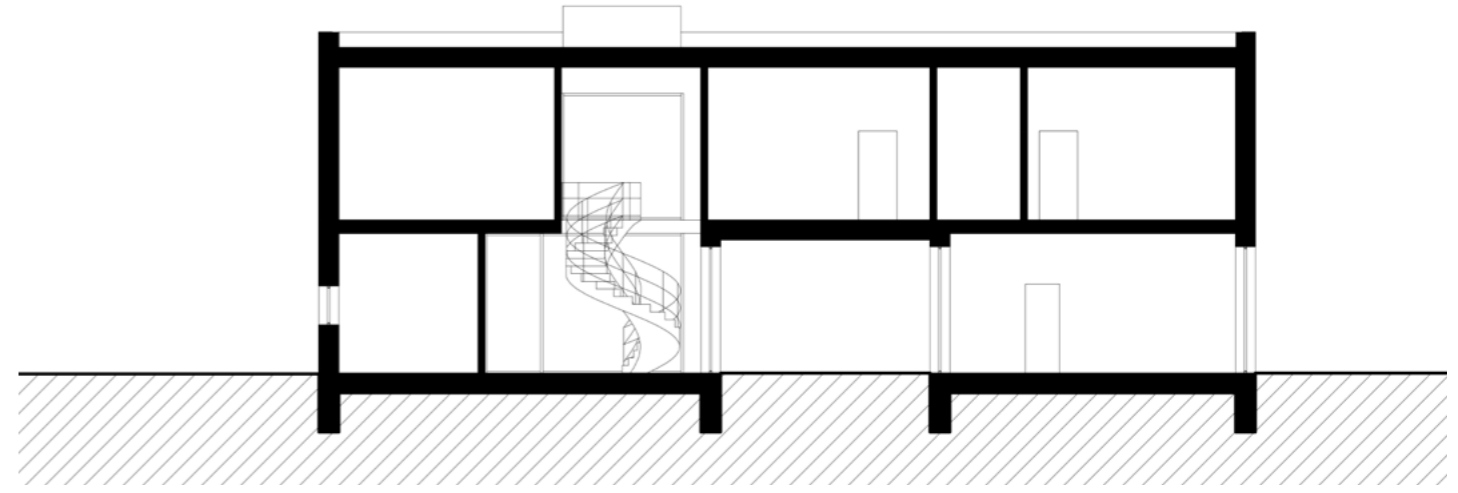
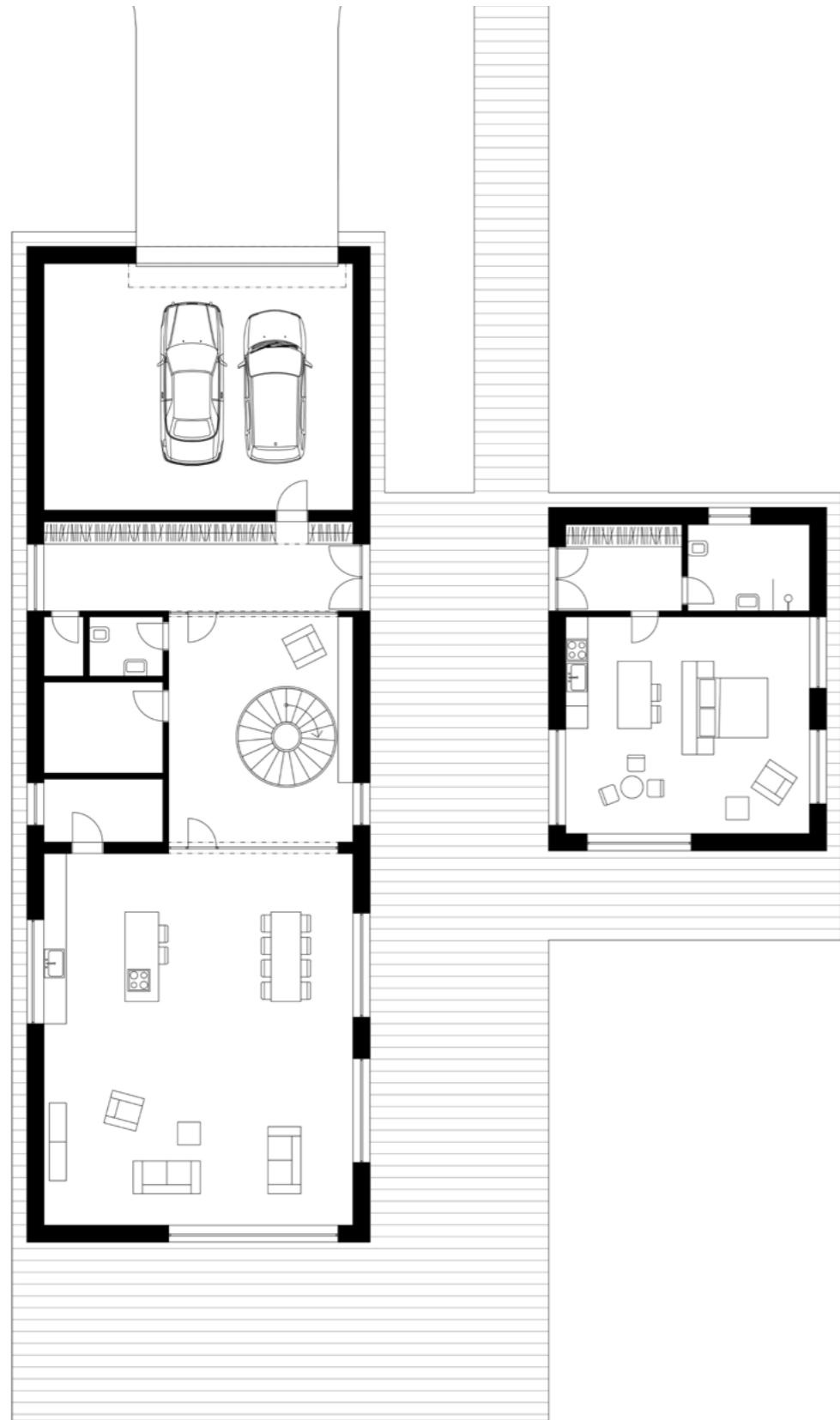




HOUSE FOR A WRITER

Malinská Petra
Šulcová Dita

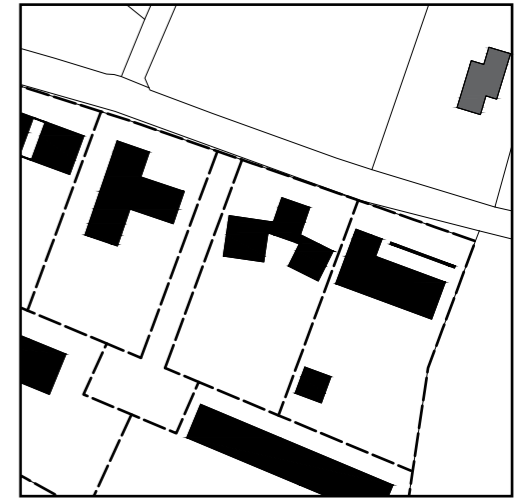
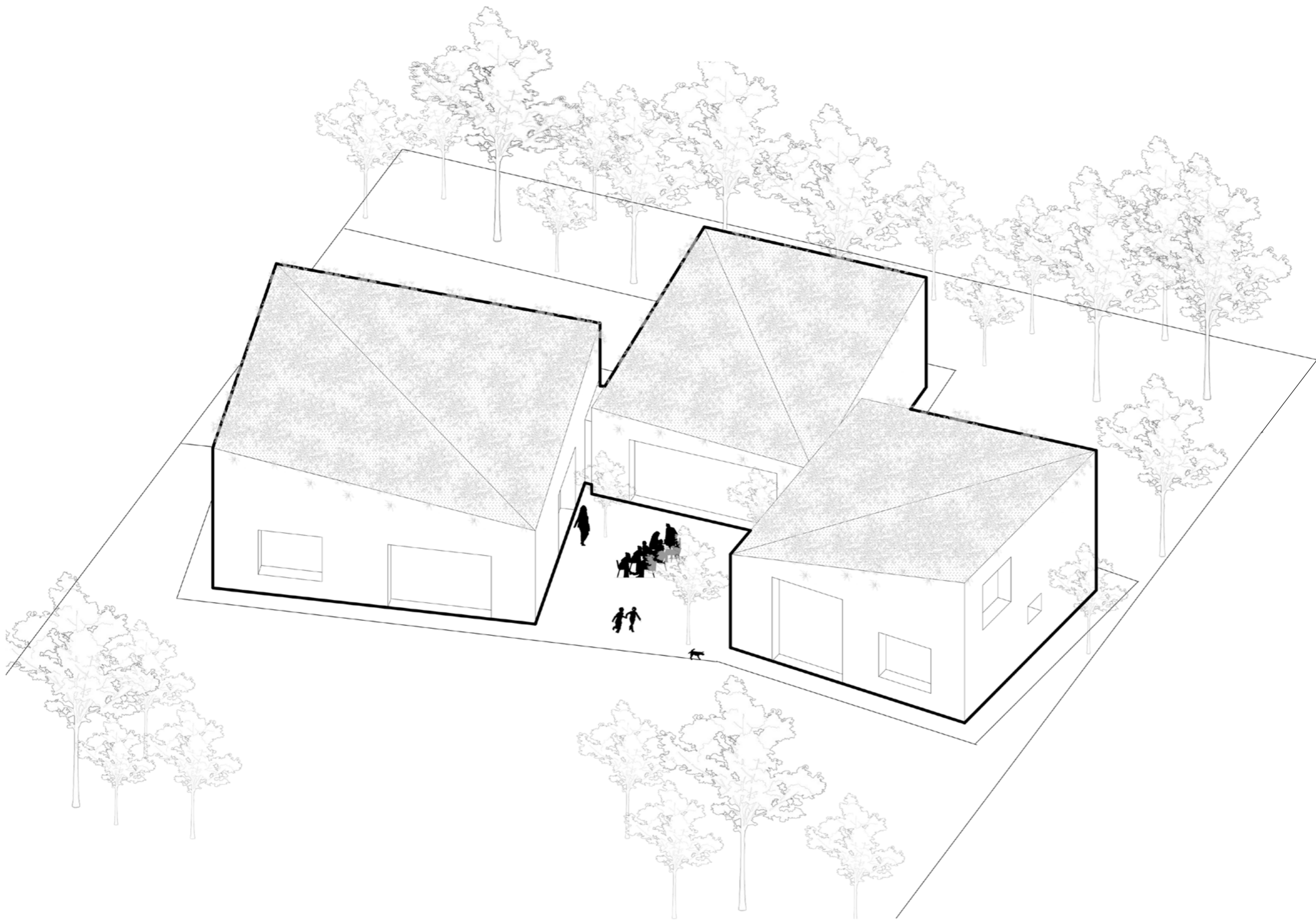
Two volumes, facing in different directions, revolve around a spiral staircase with a library. The passage between them is another point of contact. The first volume accommodates a day area opening toward the garden with an artificial lake. Bedrooms and private areas are on the second floor of the second volume, the ground floor of which can be used independently as a guest house, office or for aging parents.



0 1 10



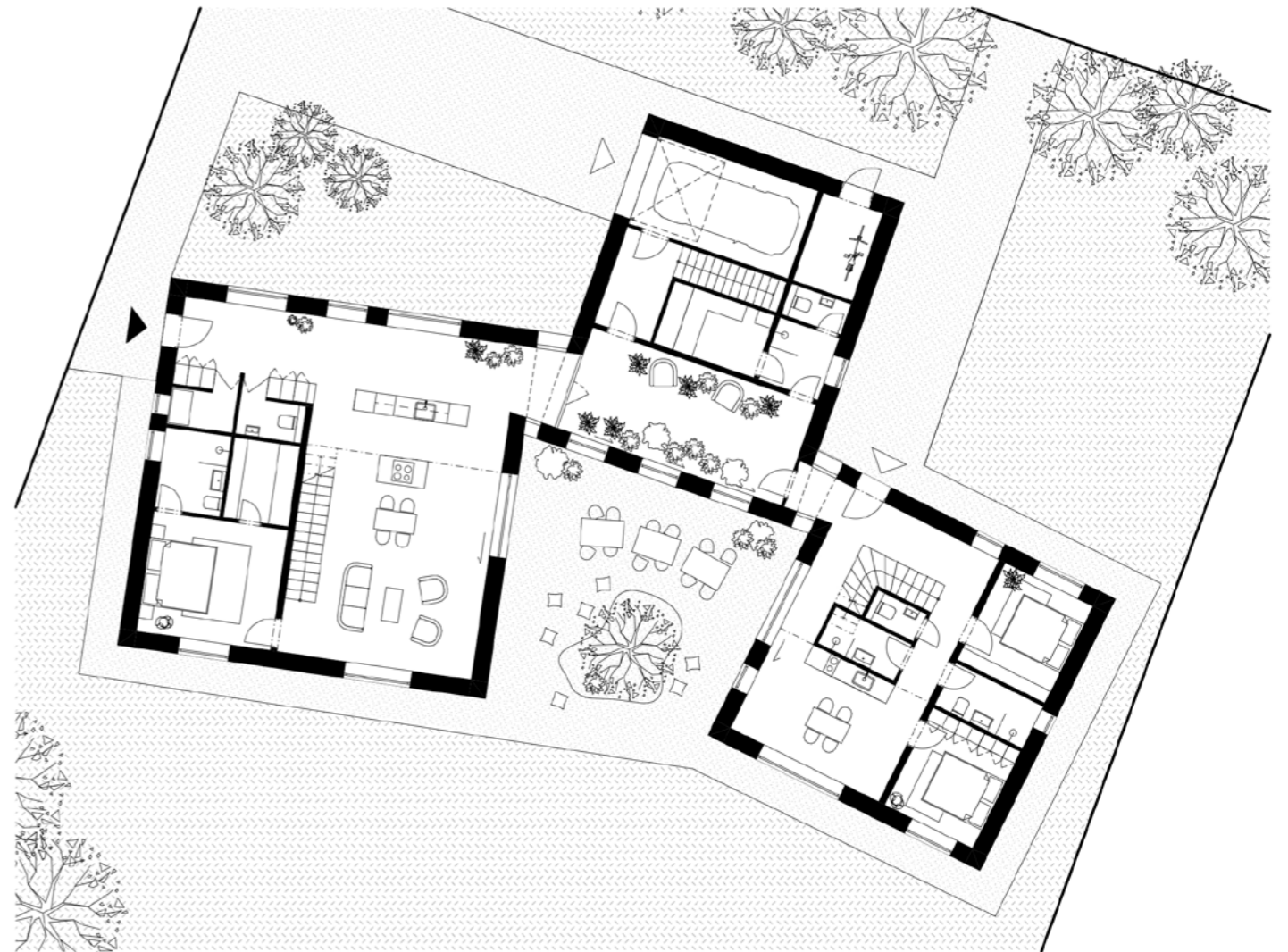
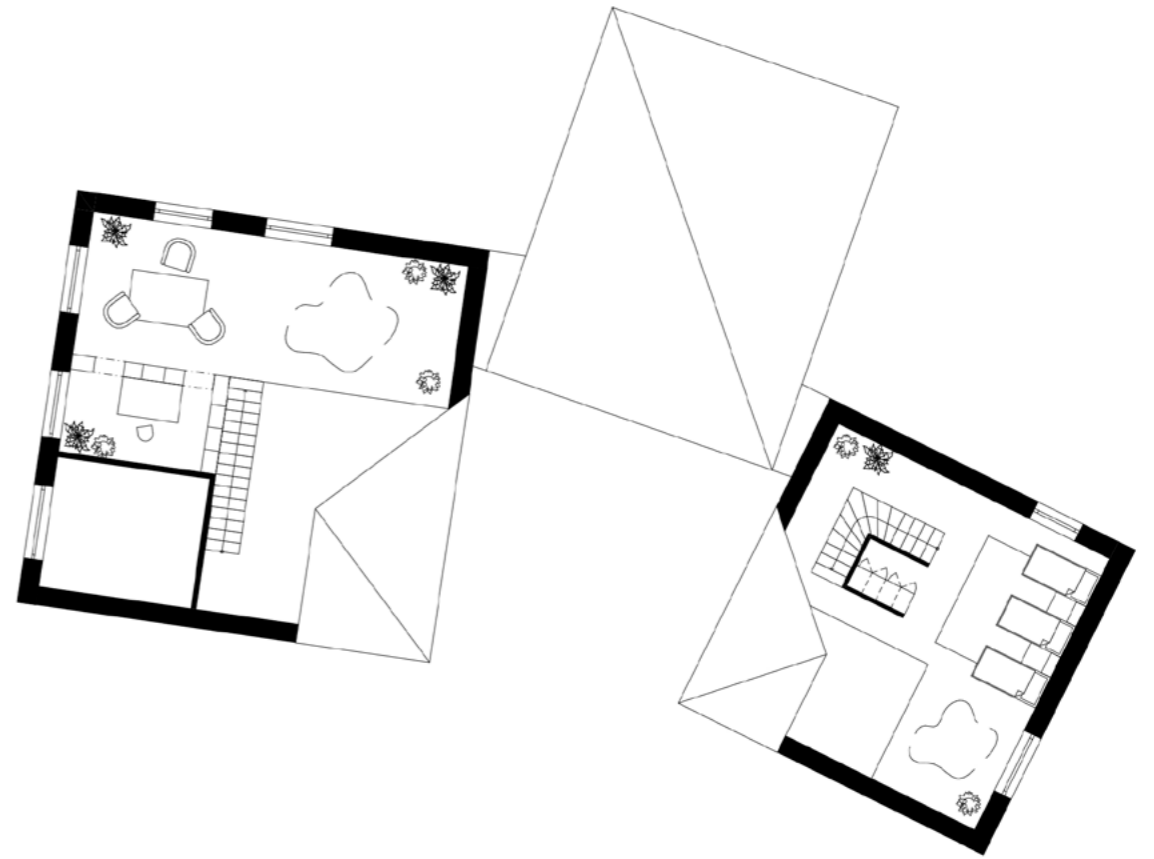
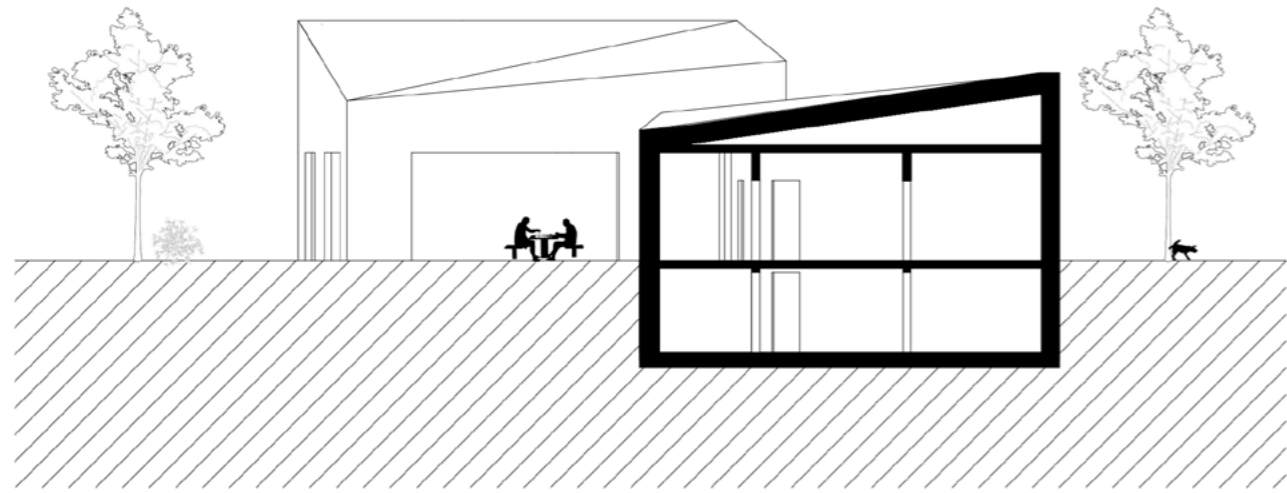
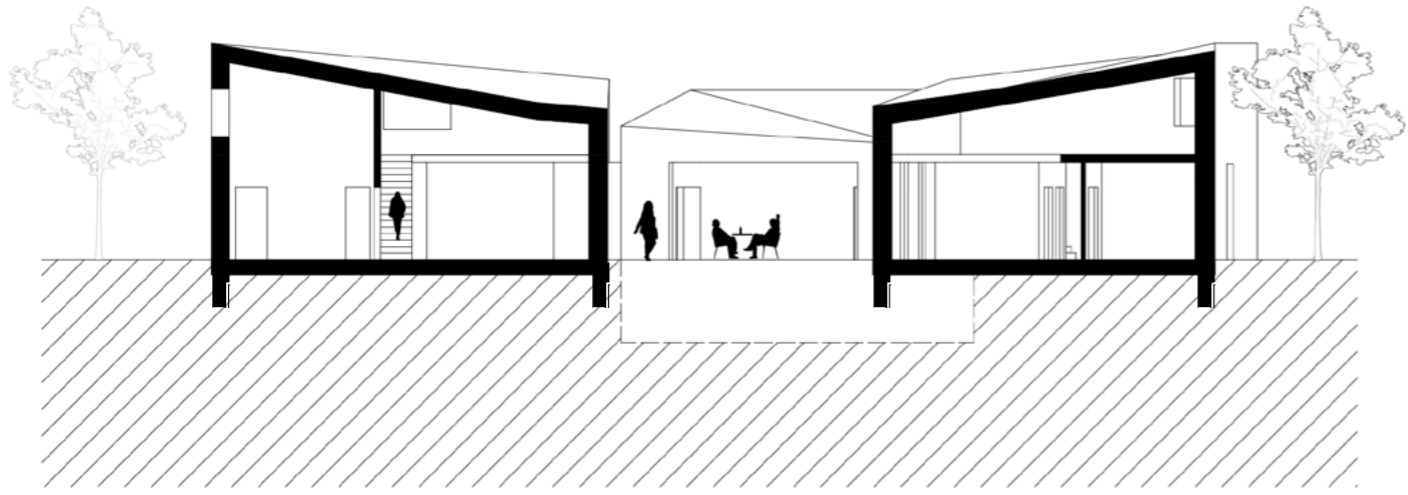
plans 1:200



HOUSE OF CONNECTION

Darnadilová Michaela
Magdolenová Jana
Myjavcová Tatiana

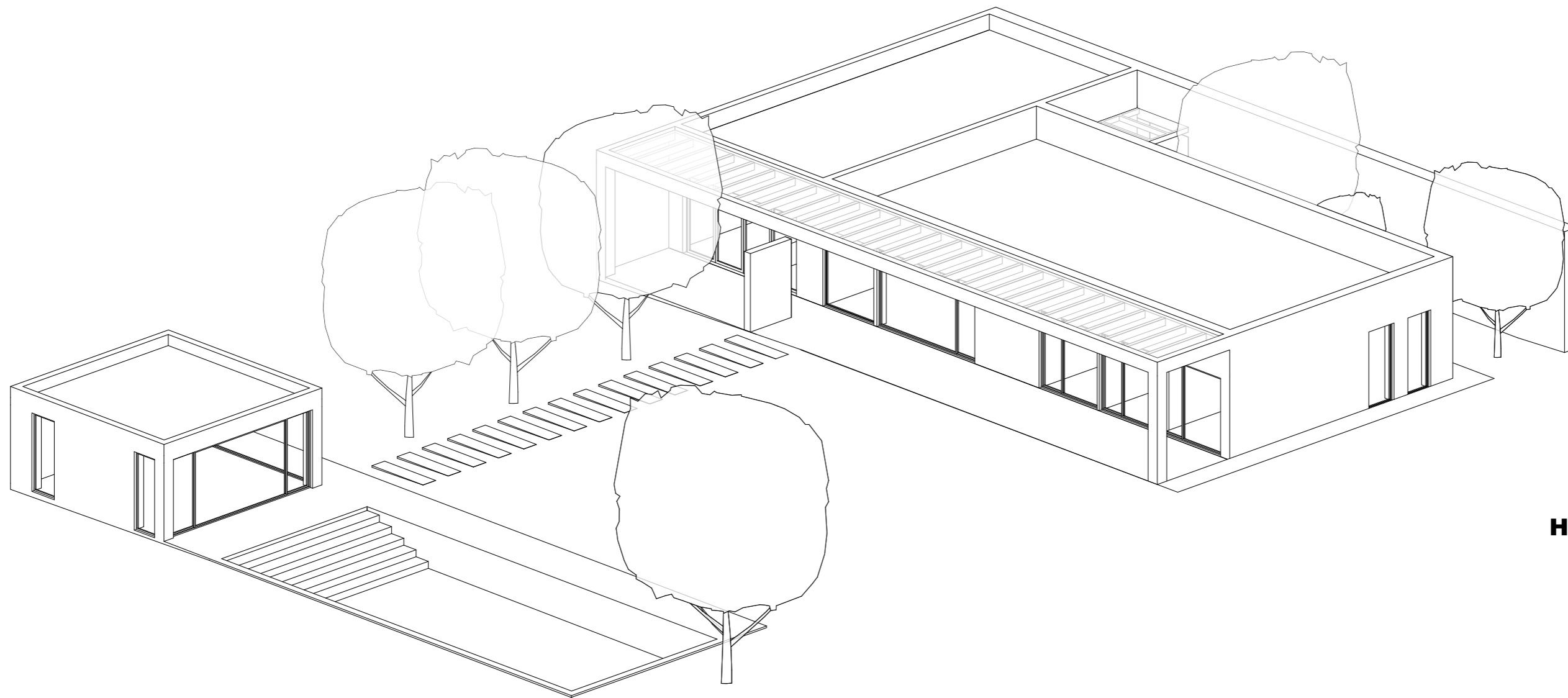
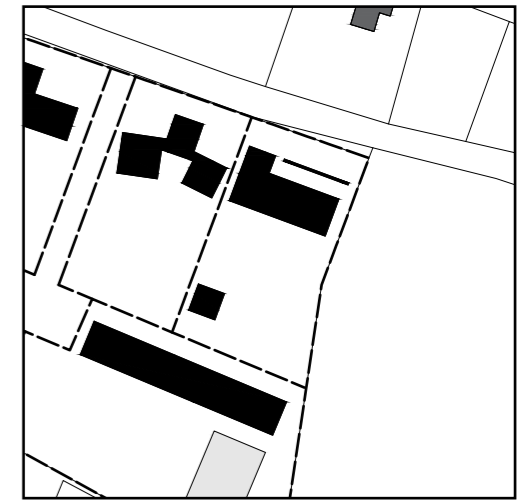
Three masses with clearly defined functions can work separately but also be connected into one house for a married couple and their children's families. Rotations of these masses create different exterior situations where the most important one is the central patio serving as a transition between private indoor living and a wide-open garden.



sections 1:200



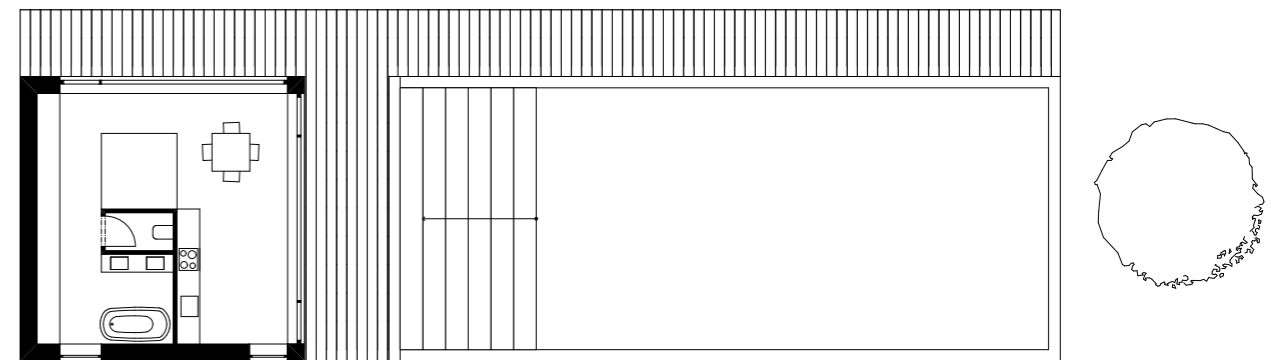
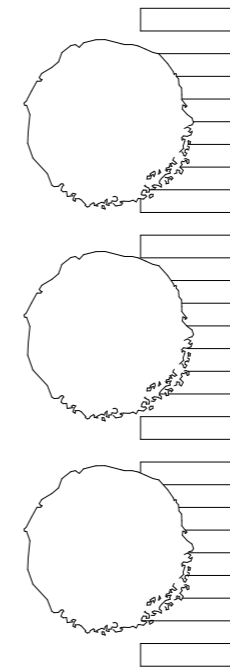
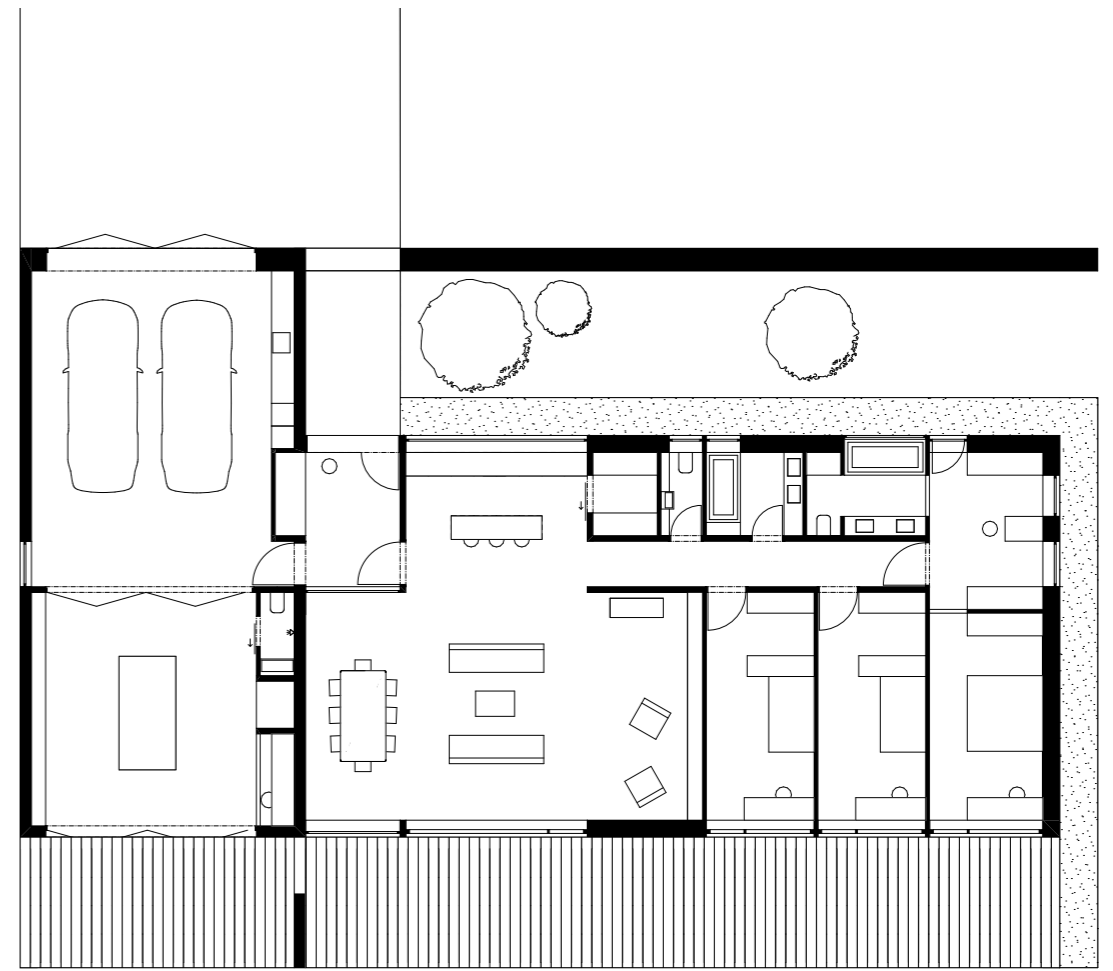
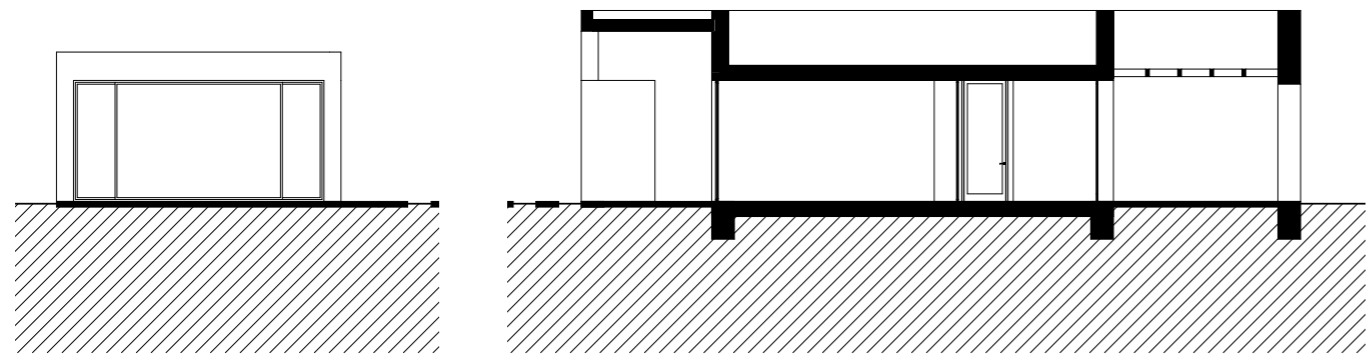
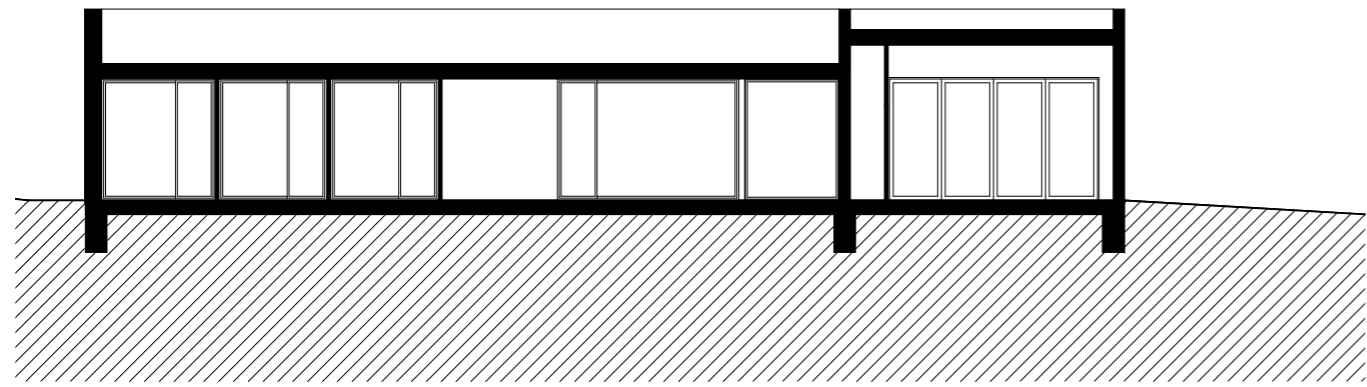
floor plans 1:200



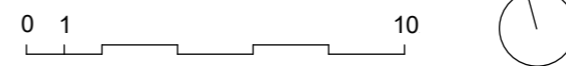
HOUSE WITH WORKSHOP

Krinitzky Natalia
Šimůnková Barbora
Tesař Prokop

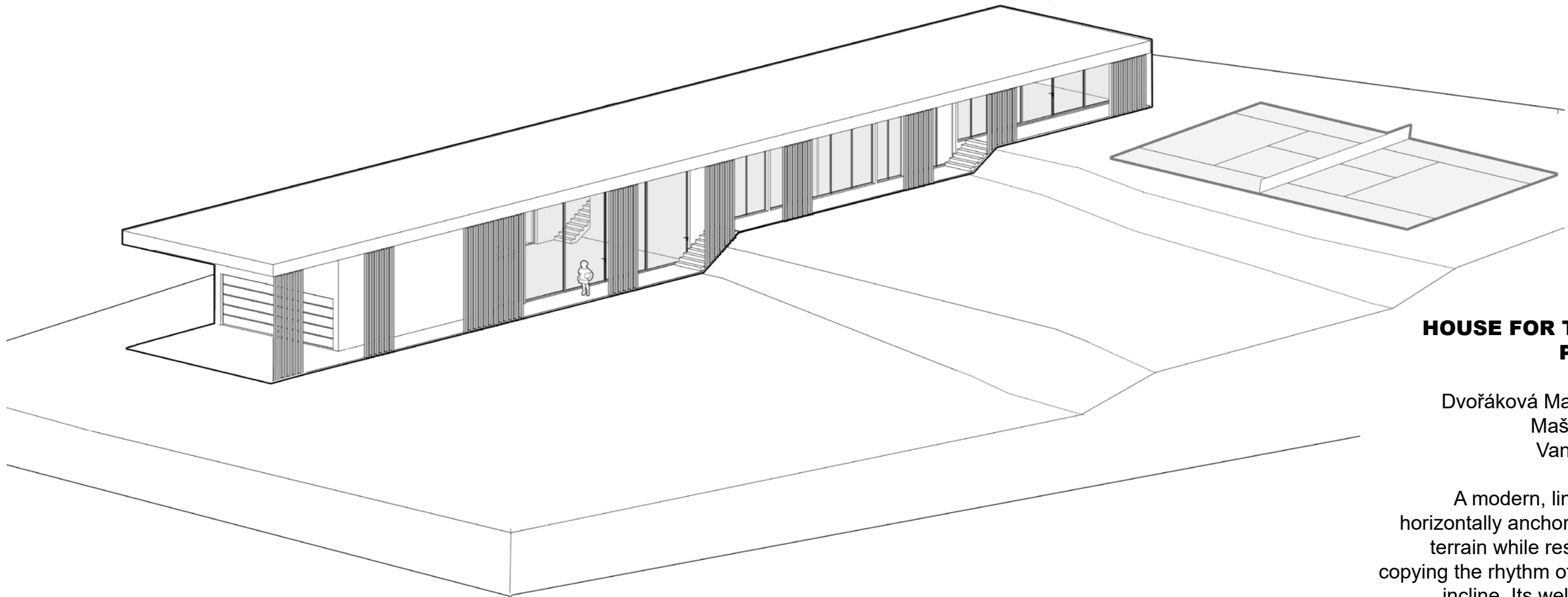
The house is designed for a family with a do-it-yourself approach to their needs, providing a divide between work spaces and relaxation spaces. The house is made up of two perpendicular and asymmetric axes that define the different spaces and give rise to the main circulation of the house.



sections 1:200



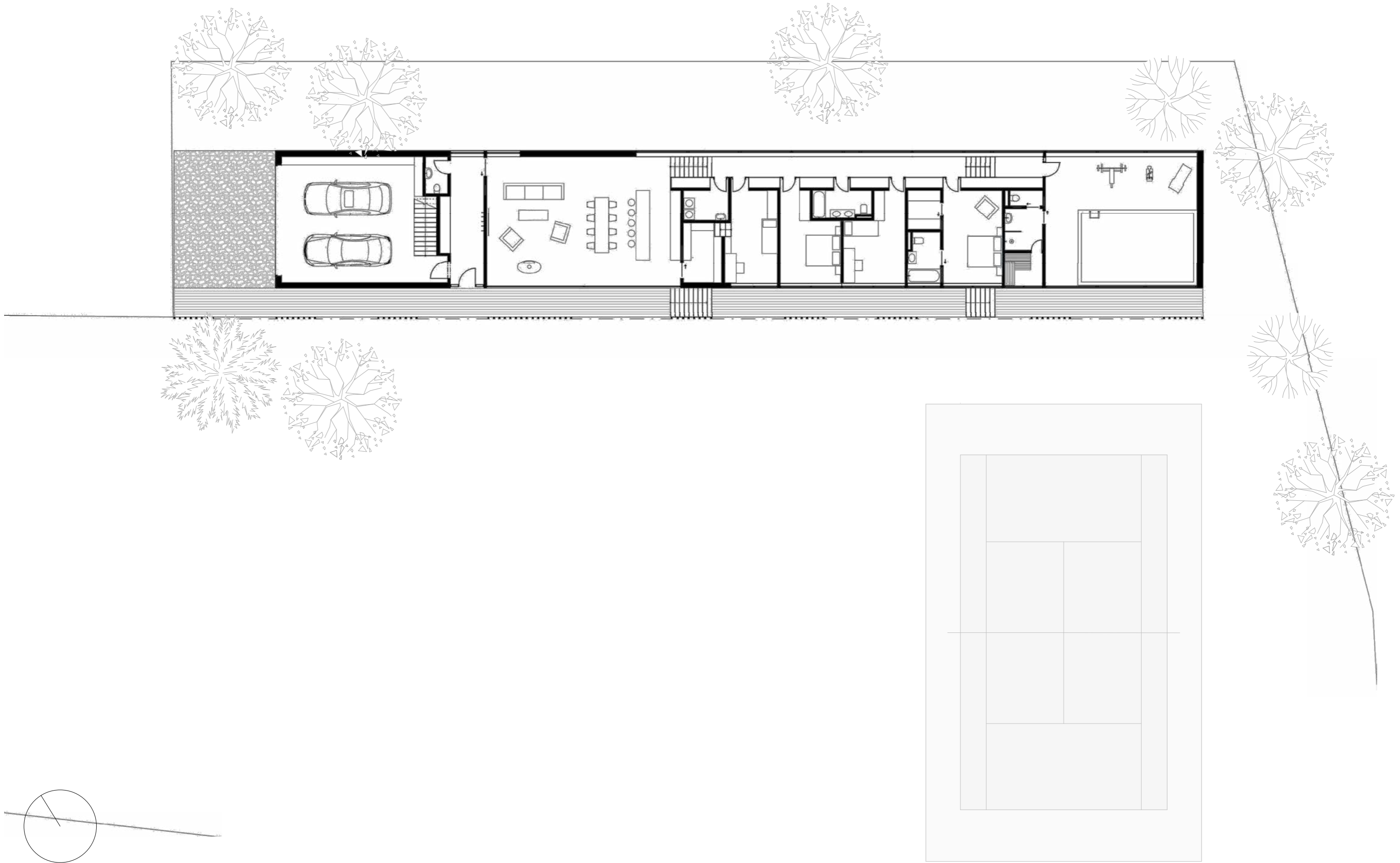
floor plans 1:200



HOUSE FOR TENNIS PLAYER

Dvořáková Maria Ester
Mašek Viktor
Vaněk Matěj

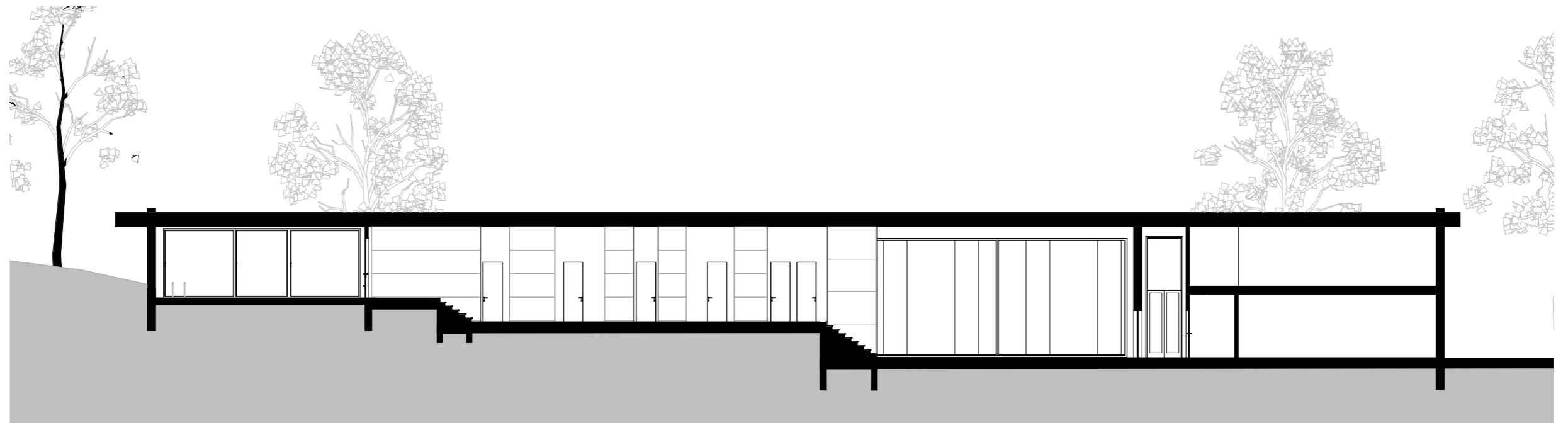
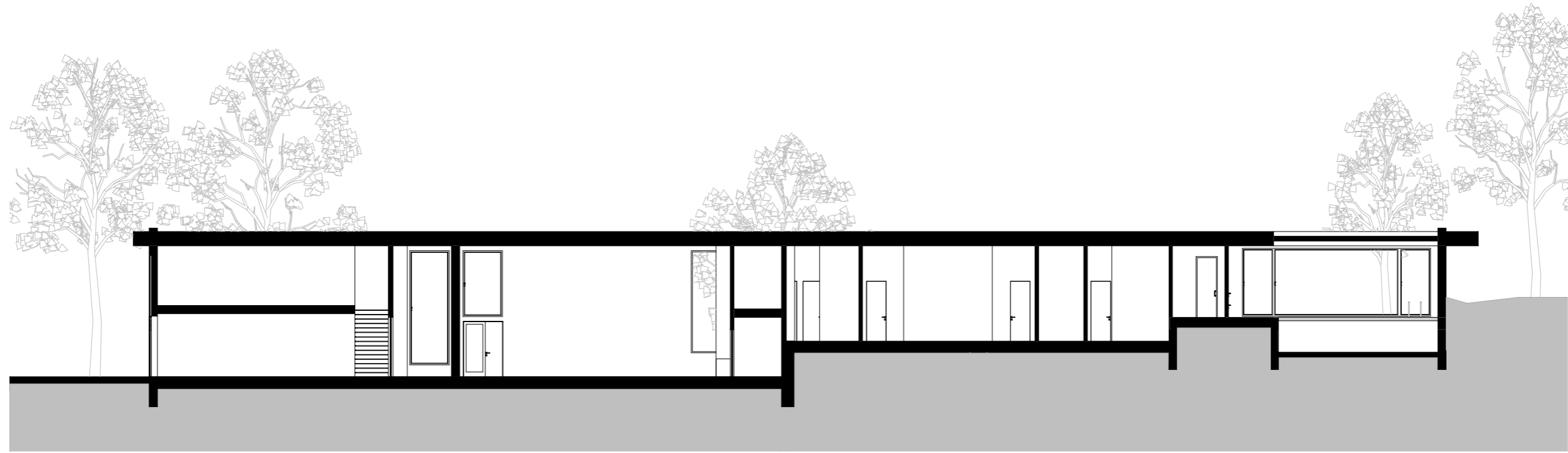
A modern, linear villa, horizontally anchored in the terrain while respectfully copying the rhythm of the lot's incline. Its well-thought out walls and columns harmoniously create a natural flow between interior and exterior. Its clean and simple structural elements and materials such as glass, concrete and steel confer give the villa an overall feeling of tranquility.



0 1 10



floor plans 1:200



0 1 10

sections 1:200



**FACULTY
OF ARCHITECTURE
CTU IN PRAGUE**

STU