

SOBOTKA COMMUNITY CENTER

LOCATION ; NAMESTI MIRU, SOBOTKA. CZECH REPUBLIC

The site is located in middle of city Sobotka. In the corner of the square shaped square is empty space after the burning out of hotel called 'Beseda' in 1980s. Hotel and the restaurant was one of the most important meeting points for people living in this picturesque city with population reaching almost 2.5 thousands inhabitants. The project proposes multifunctional building with which city center of Sobotka is complete again and Sobotka's inhabitants acquire area for their rich community life.

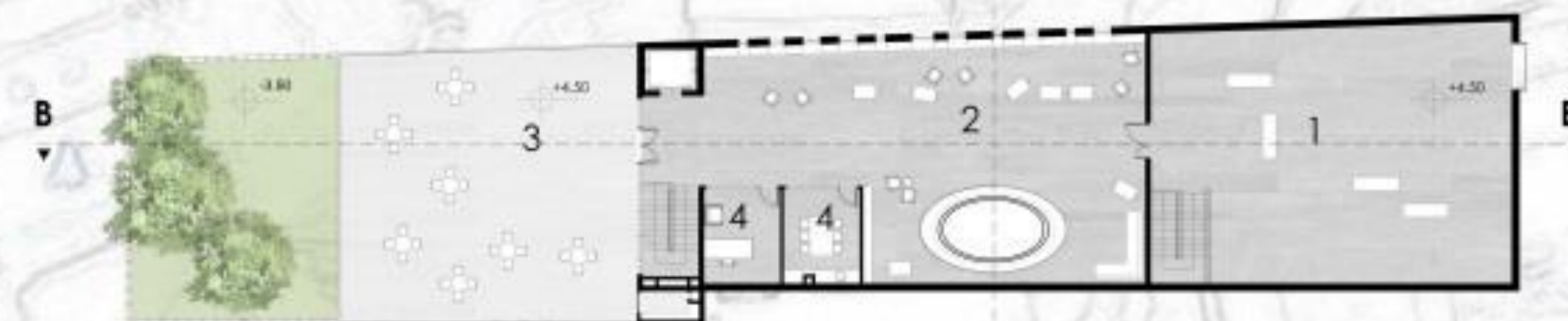


TRAFFIC DIAGRAM
 TWO DIRECTION ROAD
 ONE DIRECTION ROAD
 BUS TO SOBOTKA FROM MLADEJOV
 BUS TO JICIN



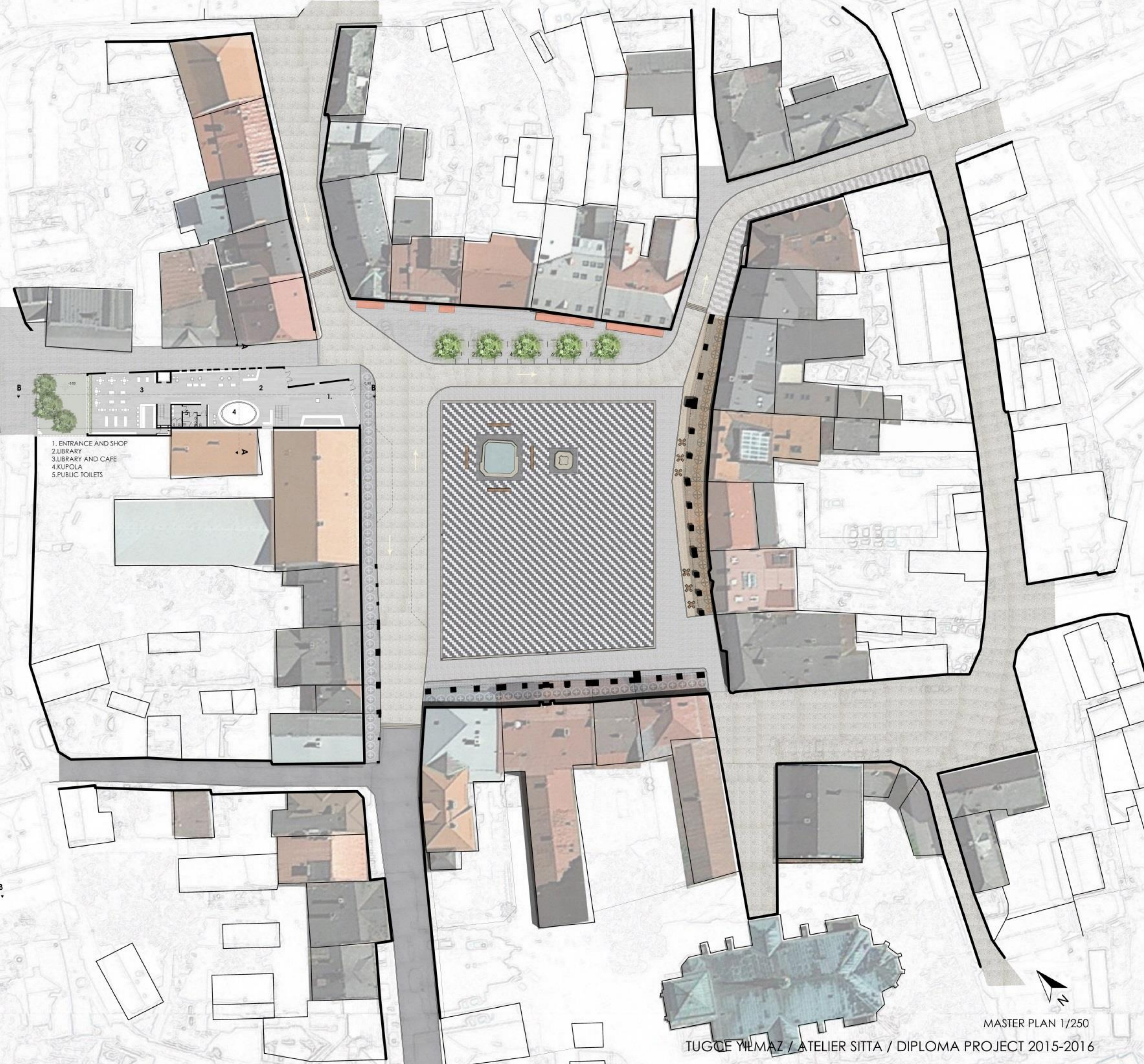
-3.50 LEVEL PLAN 1/250

1. CHILD AND MOTHER AREA
2. RECEPTION OF HAMMAM
3. WARM ROOM
4. HAMMAM
5. CHANGING ROOMS
6. TOILETS
7. TECHNICAL ROOMS
8. STORAGE



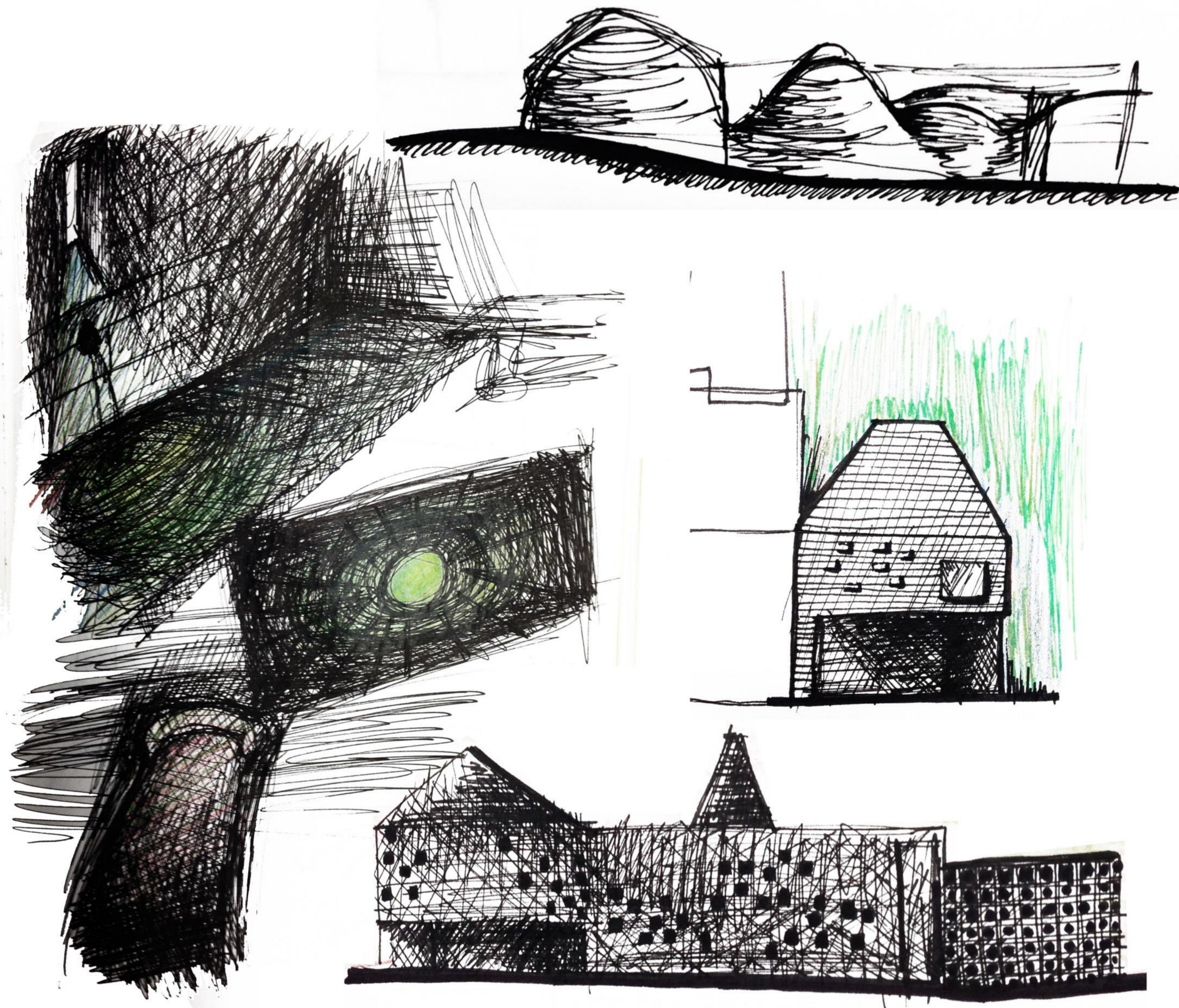
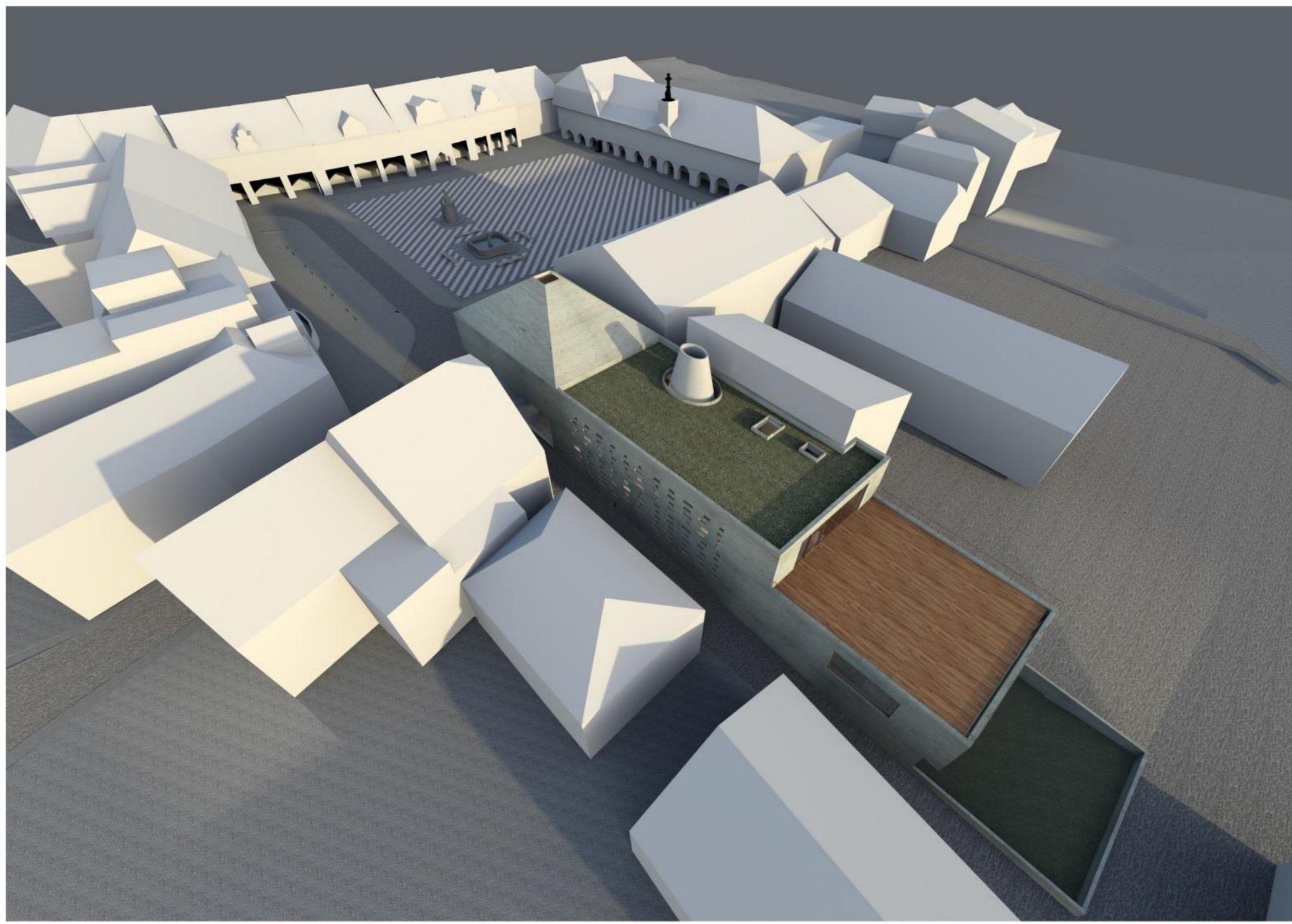
+4.00 LEVEL

1. ART GALLERY
2. MULTIFUNCTIONAL SPACE
3. TERRACE
4. ADMINISTRATION
5. PERSONEL ROOM



1. ENTRANCE AND SHOP
2. LIBRARY
3. LIBRARY AND CAFE
4. KUPOLA
5. PUBLIC TOILETS





SECTION A-A



SECTION B-B

