

PORTFOLIO STUDIE ATZBP
STVOLÍNKY
ATELIÉR EFLER



INTRODUCTION

This study and project are concentrated on the work with something already existing and adding a new function and use to it.

Stvolínky are a small village in the Czech Lípa district. Despite their small size their history is rich. In the past the castle area was a busy place. The castle changed owners a few times, so the area around it changed as well. In its prime time, there were 5 buildings. The castle, horse stables, a grainery and two buildings, both presumably barns. Today only the castle and the biggest barn are standing. Castle Stvolínky is owned by the town, but otherwise most of the land is private property. With the land they also own the still standing barn. The former linden alley and overgrown park behind this place belong to the town. Where once was a place of nobility and pride, today is a wire fence for an animal farm. One can not deny that they have enough room, but some might view this as a degradation of the former space.

In this project I wish to bring back a bit of the past, to create a space for visitors and locals. This town does not have a space where people can gather together and celebrate or just go for a coffee. And with the repairs going on in the castle by the town council, it makes sense to revitalise the area around the castle and to give something that everybody can put to good use.

DESIGN STUDIO EFLER
EFLER - TOMSA - STOČES
DEPARTMENT OF
ARCHITECTURAL
CONSERVATION
FA CTU, IN PRAGUE

KATARÍNA TOMÁŠIKOVÁ, SLOVAKIA
MULTIFUNCTIONAL HALL
REGENERATION OF CASTLE AREA
STVOLÍNKY
WINTER TERM 2020



MAPS - SITE EVOLUTION



INDIKAČNÁ SKICA, 1843 (INDICATING MAP)
(archivnimapy.cuzk.cz)



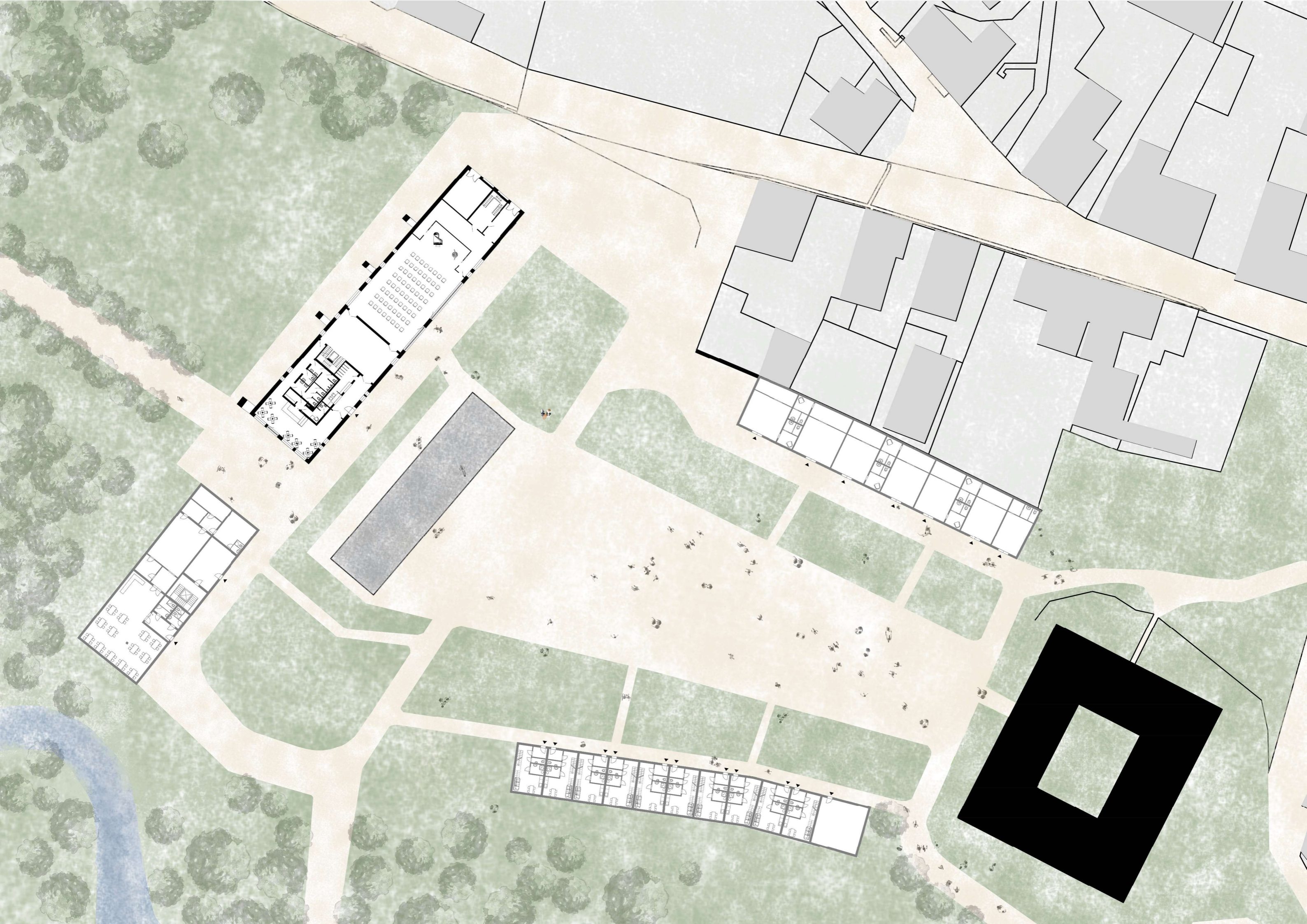
STÁTNÍ MAPA, 1996 (STATE MAP)
(archivnimapy.cuzk.cz)



STÁTNÍ MAPA, 1964 (STATE MAP)
(archivnimapy.cuzk.cz)



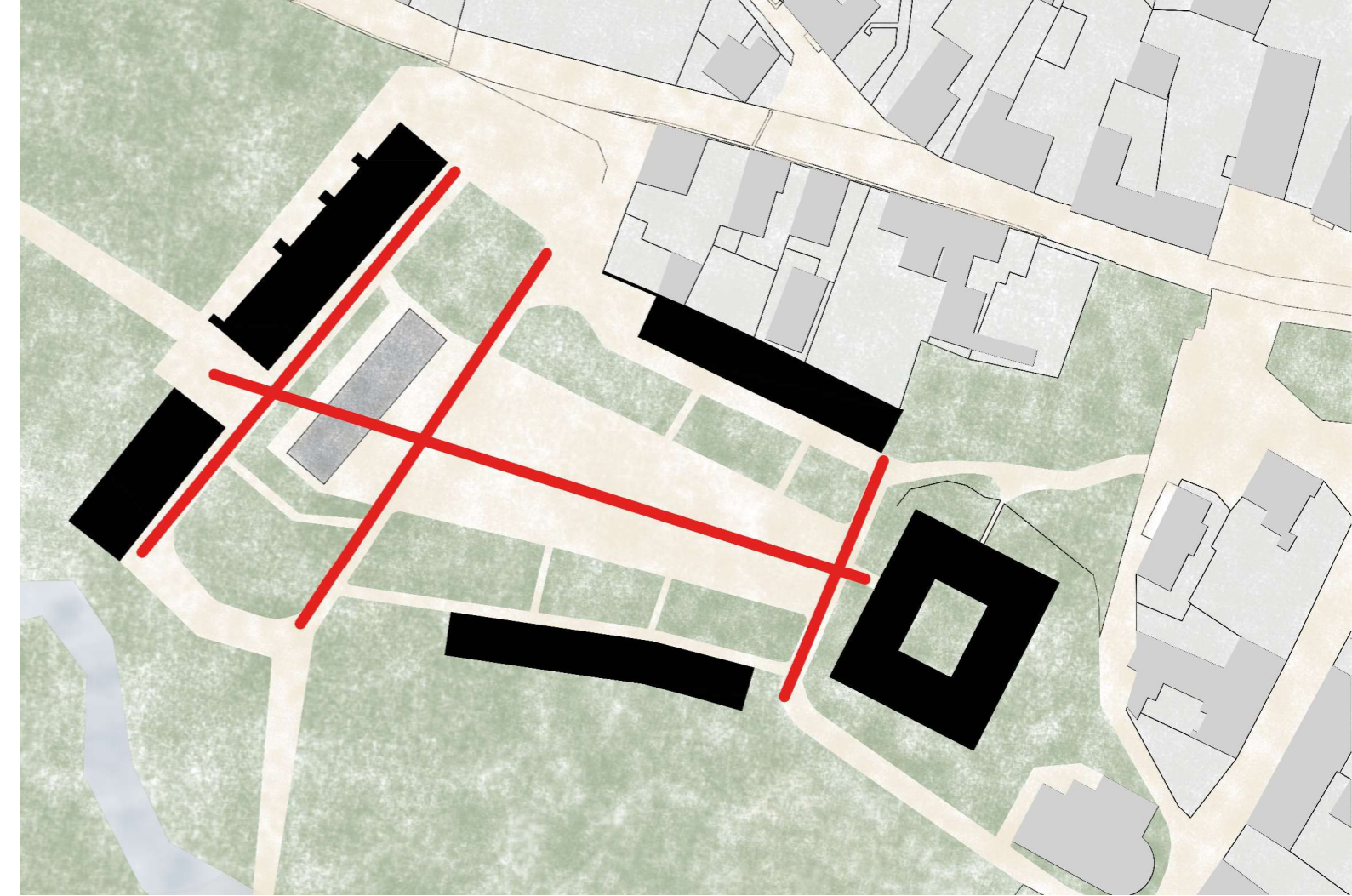
AERIAL VIEW, 2020



SITUATION

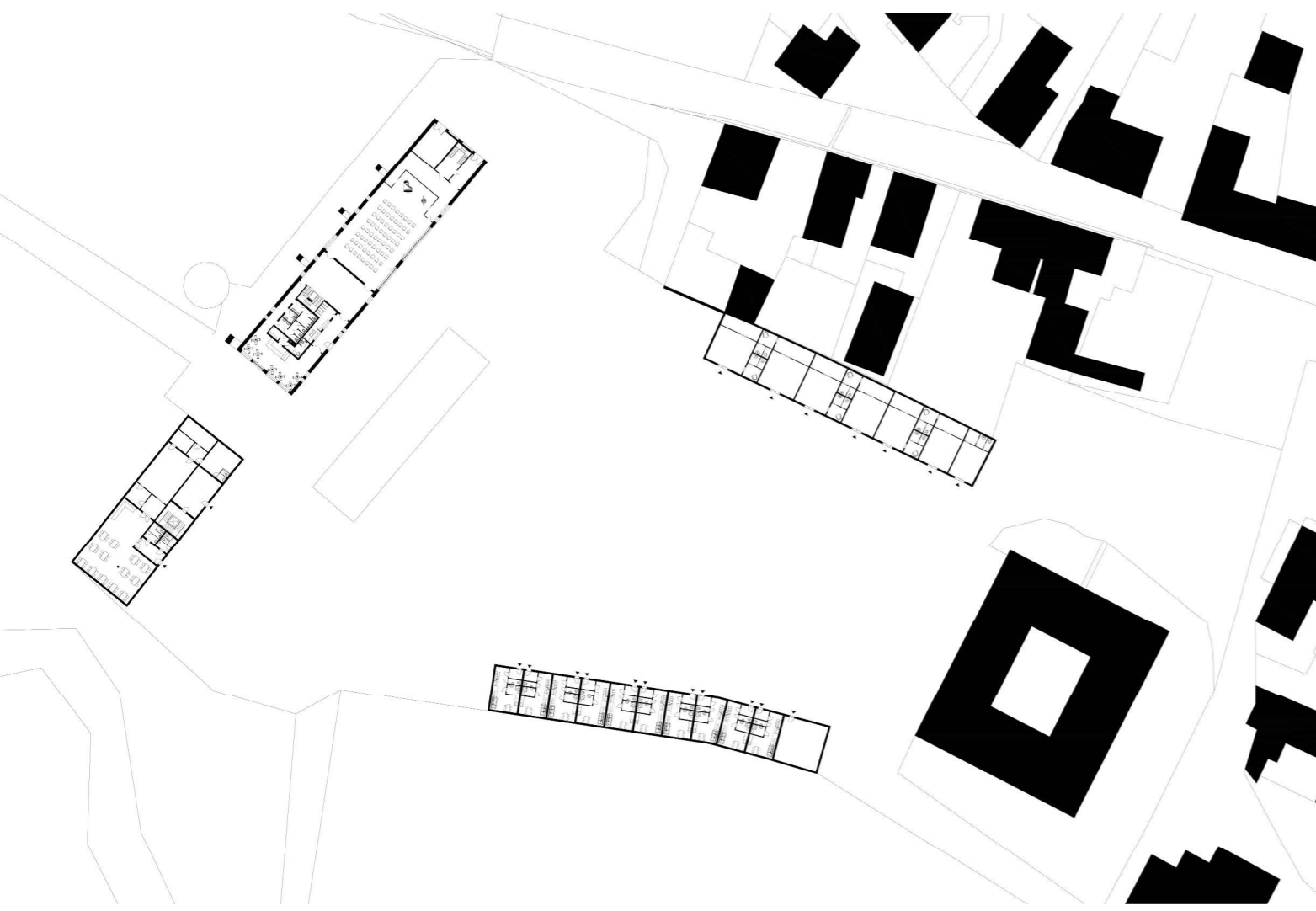
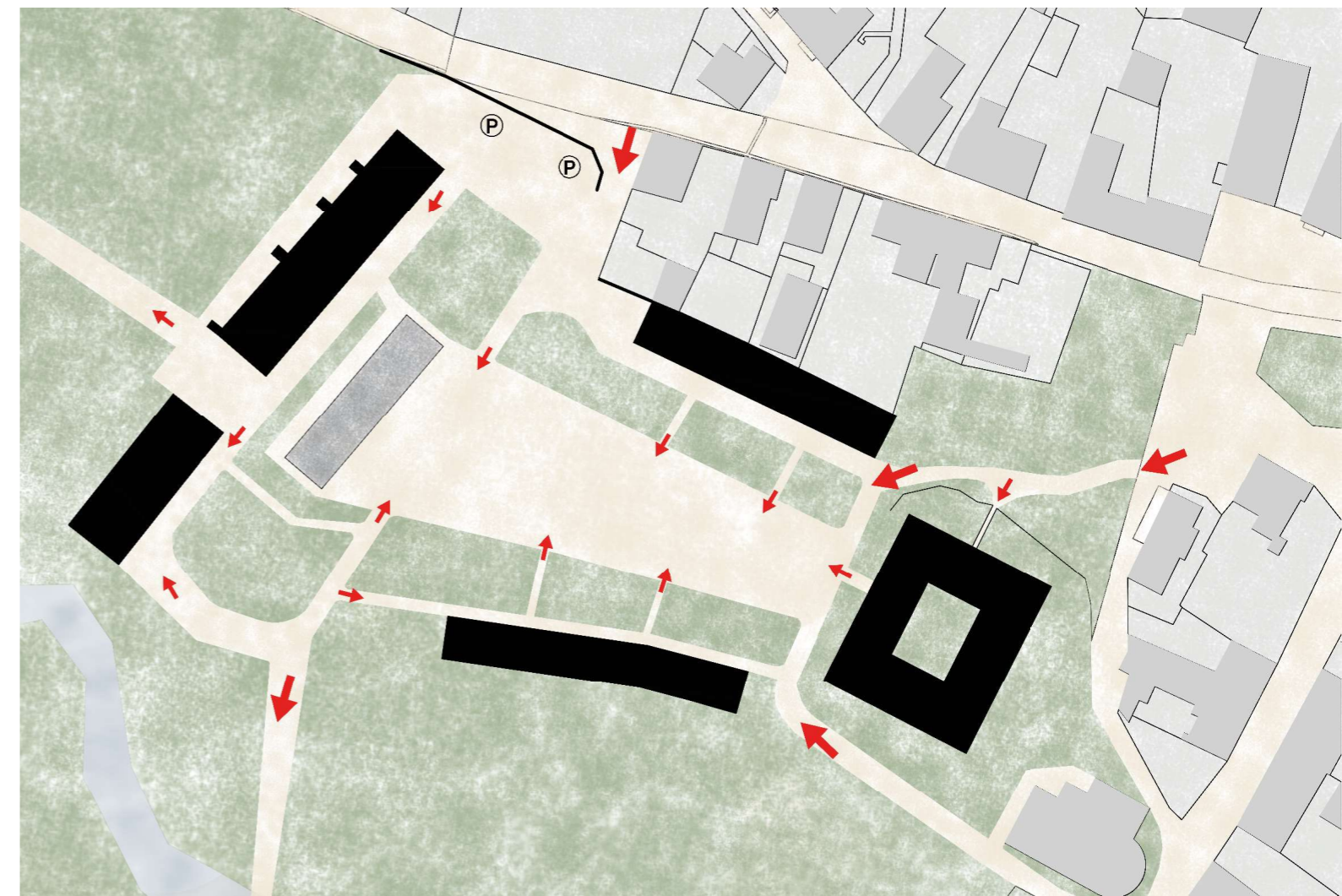
In the past the 4 buildings in the castle farm courtyard enclosed the area and defined the property. On the old maps we see this space gradually opening up. What I aim to do is to close this space again. In doing so I'm creating a space which is open but on a smaller scale. The middle „trapeze“ shape has a function of a town square. At the end of it is a platform, and ideal space to build outdoor stages. It's encircled by two long buildings, workshop area and accommodation. These to face each other. On the west end are two other buildings, the administration unit and multifunctional hall. Together we have here a complex which covers all the needs for a vacation or for exemple team building activities. The workshop area is where people can learn more about traditional czech crafts such as pottery, wiring, lacelike, basket - making ... The accomodations is for around 40 people. There is a small dining room in the administration building, but each housing unit has it's own small kitchen.

The focus in this project is the multifunctional hall.



4 PRICIPAL AXIS

ENTRANCE POINTS

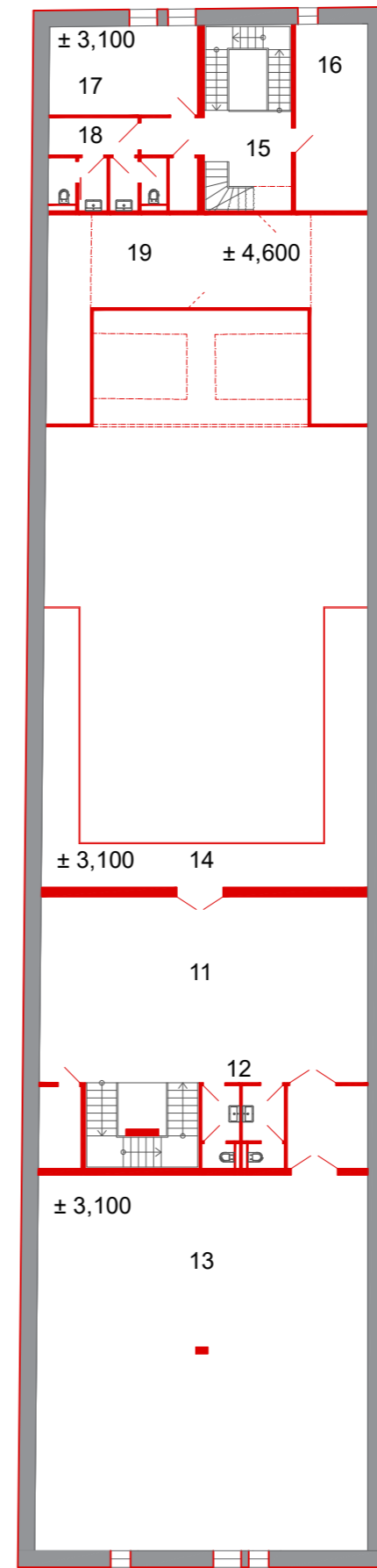
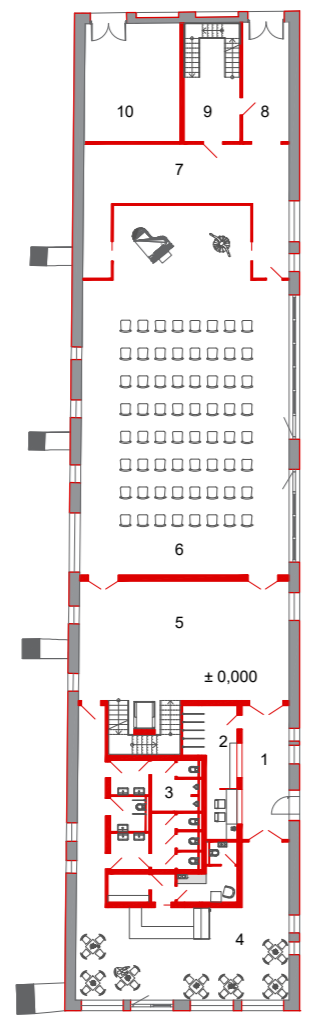
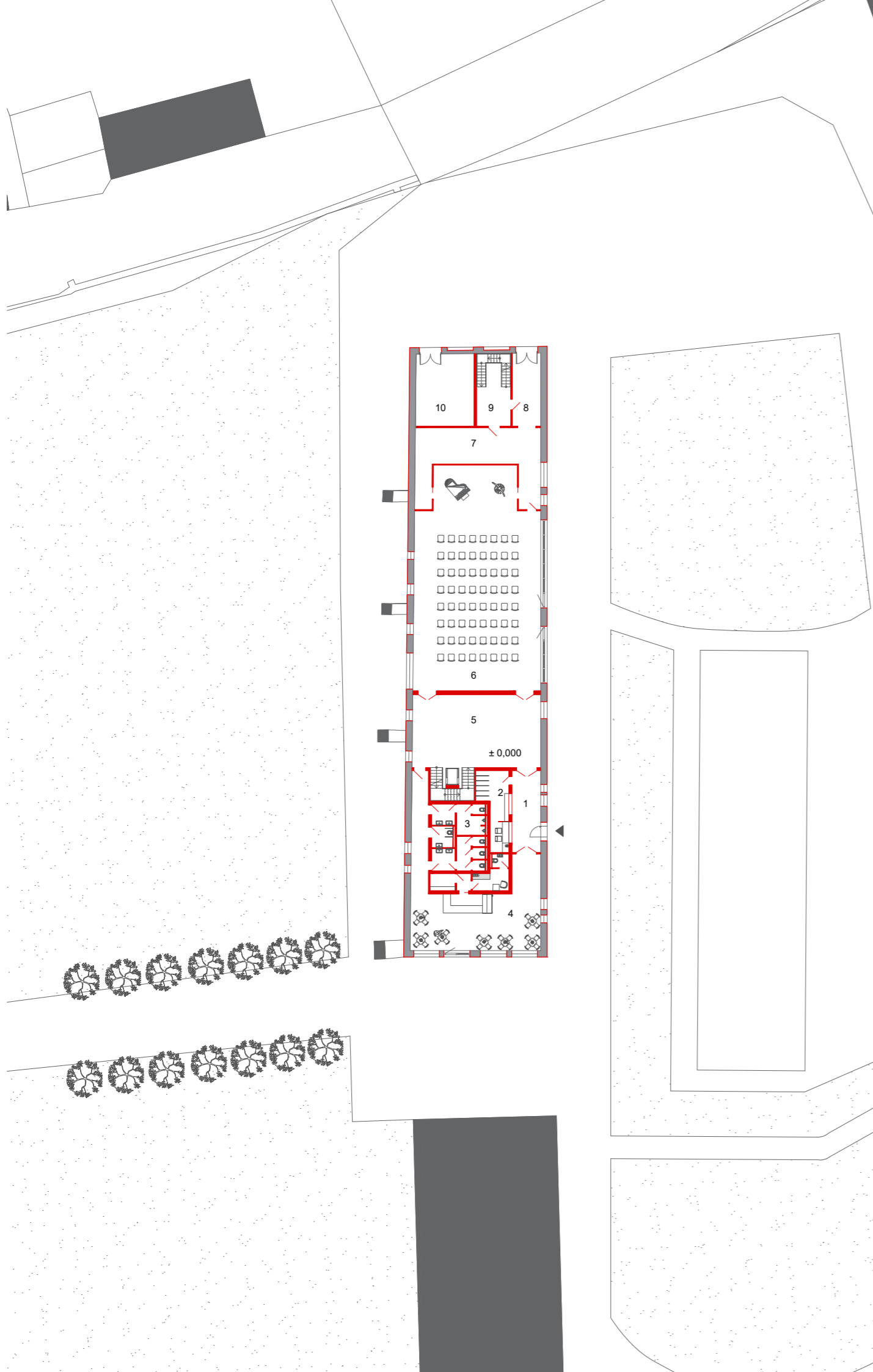


MULTIFUNCTIONAL HALL

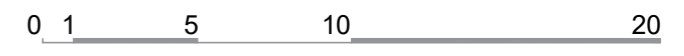
This hall was designed using the already existing enclosure walls. The interior disposition is completely new. It has 2 levels. You enter on 1 NP into a hall with the reception desk and cloakroom. There are two doors, on the left and right side. Entering through the left one you walk in the café. This one is open all the time and serves visitors. In the evening it transforms into a catering area accessible only for the guests of the event. You can walk around, in the back are toilets for the guests and the path also leads to the foyer. All the utility and sanitary rooms are placed together in a compact unit placed in the middle. In the foyer there is a staircase with a lift for disabled people, and the entire building is disabled-friendly. From the foyer we enter into the mail hall. Chairs inside are optional, it can serve as a dining area, dance area, theatre place... Entering on the other side the backstage there is also an entrance for the performers, a staircase for accessing the dressing rooms on the second level. Here is also the main technical room situated. On the second level in the backstage we have two dressing rooms, sanitary area and technical platform. If we go up stairs from the foyer, we can enter another smaller multipurpose room, toilets and the winged balcony in the mail hall.

The outside facade is kept simple, a few new windows have been added. It is now possible to open the doors in the main hall and so expand the cultural event outside. The café has also this possibility. As a main decoration point are the re-used metal doors, as a sliding shield from sun and an indication of an entrance into the building.





- 1 - ENTRANCE
- 2 - RECEPTION + CLOAKROOM
- 3 - TOILETS
- 4 - CAFÉ
- 5 - FOYER
- 6 - MAIN HALL
- 7 - BACKSTAGE
- 8 - BACKSTAGE ENTRANCE
- 9 - STAIRCASE
- 10 - MAIN TECHNICAL ROOM
- 11 - HALL
- 12 - TOILETS
- 13 - SECOND MULTIFUNCTIONAL ROOM
- 14 - BALCONY
- 15 - HALL
- 16 - DRESSING ROOM
- 17 - DRESSING ROOM
- 18 - TOILETS
- 19 - TECHNICAL PLATFORM

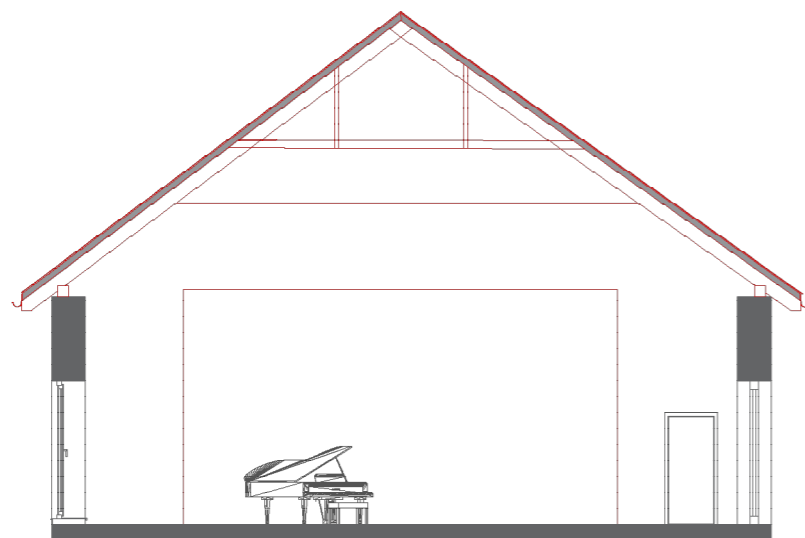




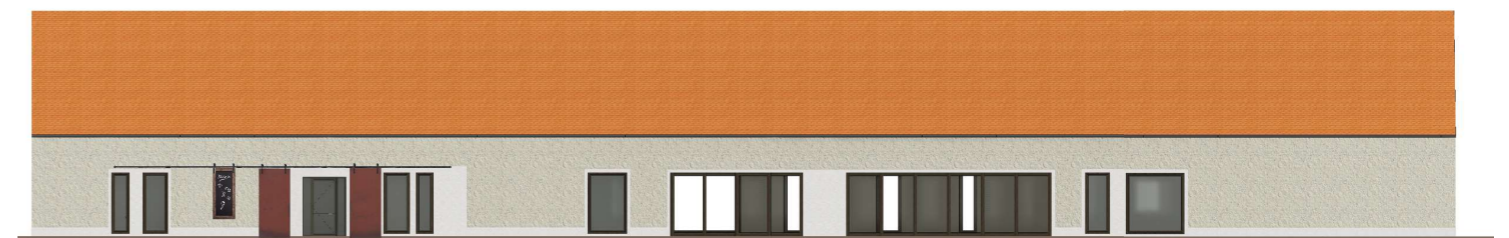
SOUTH ELEVATION



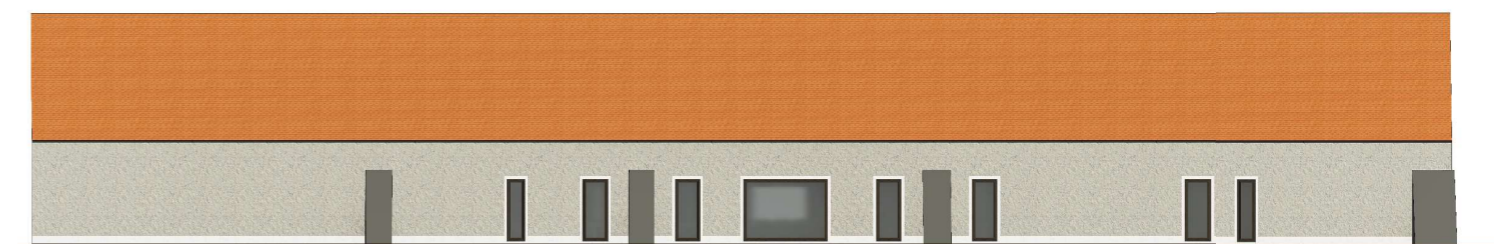
NORTH ELEVATION



SECTION
MAIN HALL



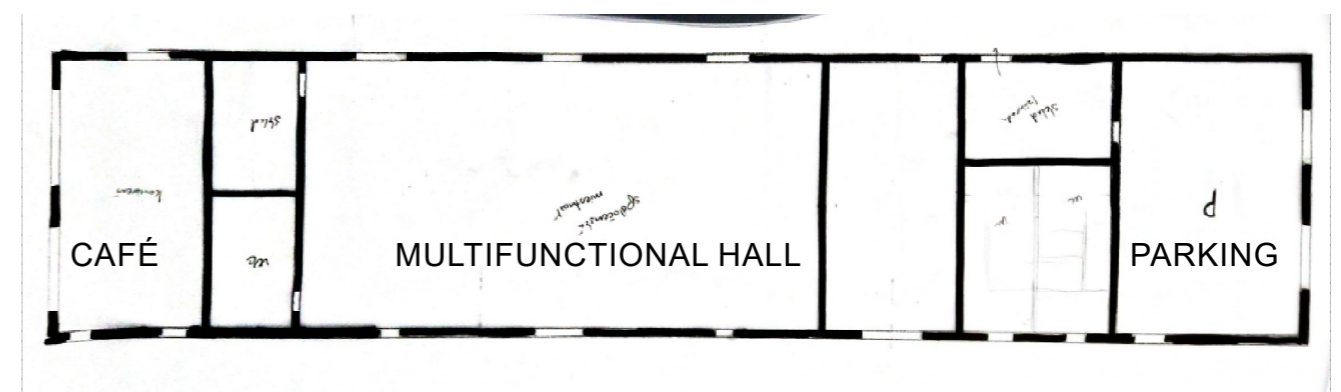
EAST ELEVATION



WEST ELEVATION



3D Mass concept
 - placement of buildings
 - visual connection
 - first concept/idea



FLOOR PLAN SKETCH



