

THE SETS - KULISY

Mikulova, Jižní Město, Praha

ELIŠKA SYRŮČKOVÁ

Atelier Rehwaldt

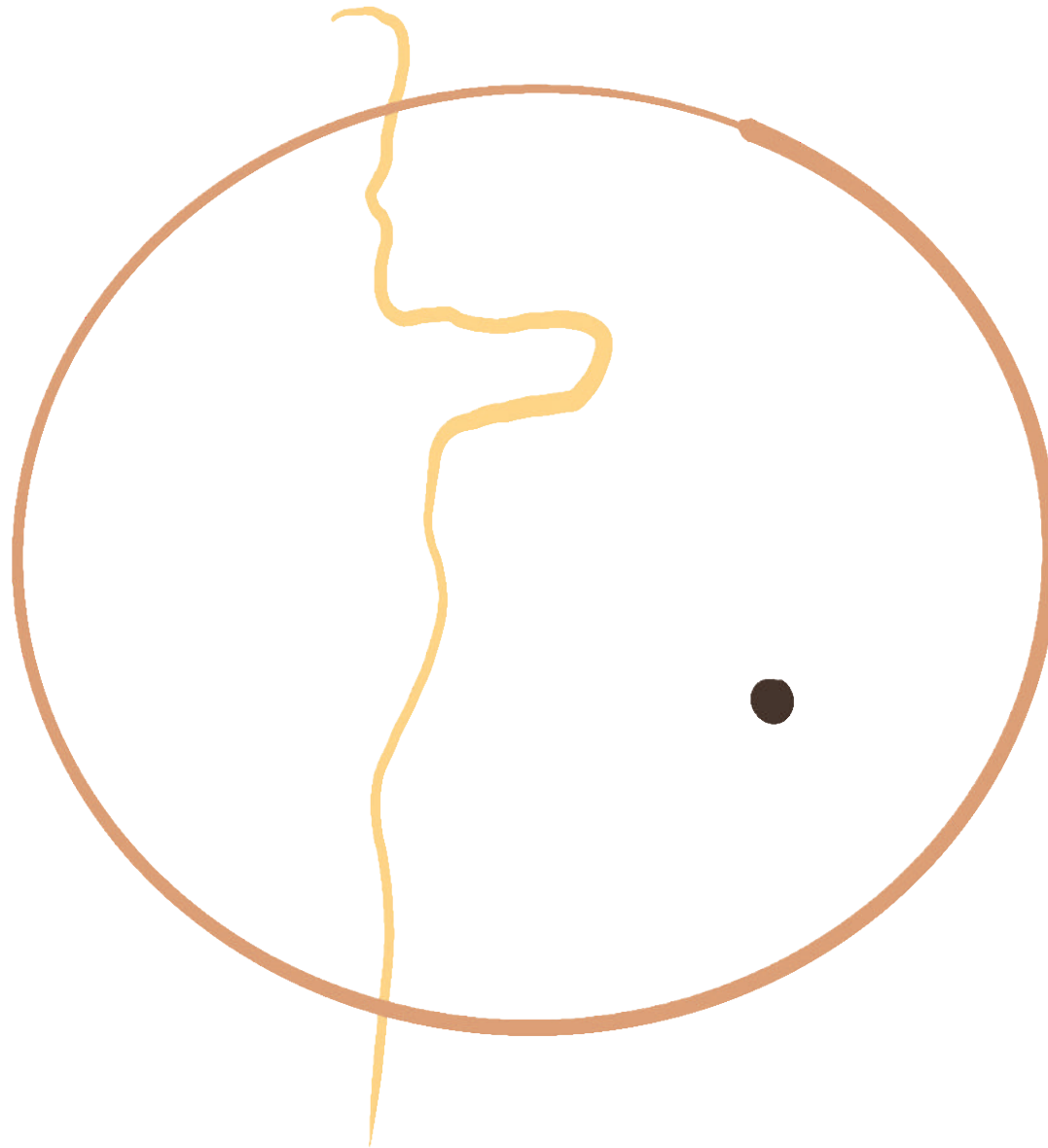
ZS21/22, FA ČVUT



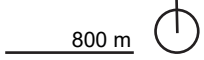
Jó Jižák, Jižák město snů,
my žijem tu už spoustu dnů,
beton je tady a beton je i tam,
všechno je na beton a každěj fandí nám.
PSH

Transformation of an unused area right next to the Central Park in the South City. The concept is based on the harsh culture of the old housing estates. The main inspiration for the project was the graffiti wall which can offer various creative use. The new cultural space provides walls for legal graffiti, drawing, hanging posters or organising art exhibitions under the sky. The walls form a geometric grid with various rooms for sport and relax. They hide and gradually reveal new views.

LOCATION IN PRAGUE



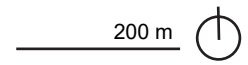
WIDER RELATIONS



CLOSER RELATIONS



- subway
- bus stop
- children playground
- cafe
- schools
- green areas



HISTORY

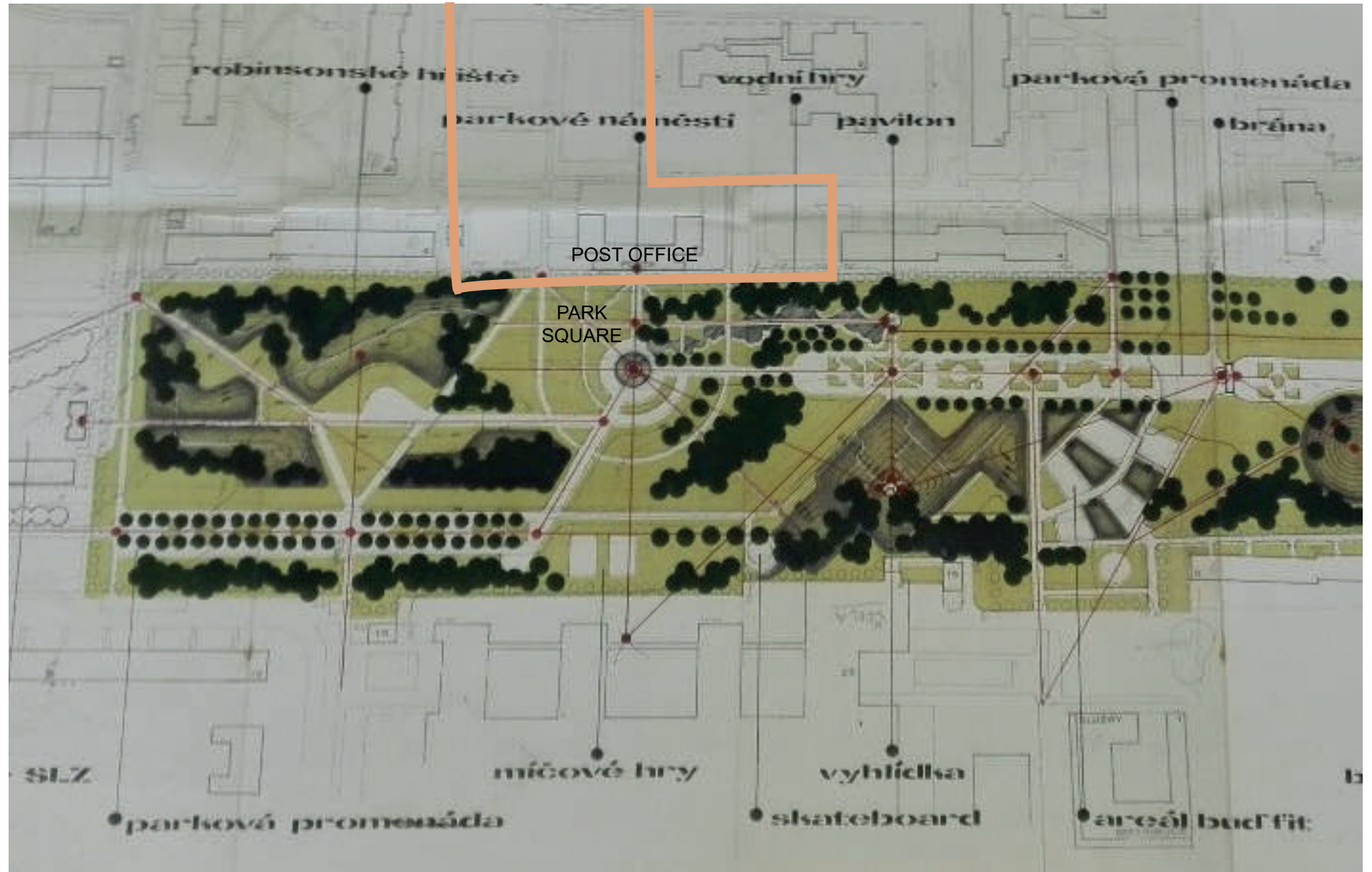
In 1966, a public tender was held for the concept of the Southern City, intended as an internally interconnected whole. The winning design by J. Krásný, V. Musil, K. Ondroušek and V. Skokan, awarded the 2nd prize, considered a city complex with a independence from Prague.

The integration into the landscape and the organization of functional areas were especially appreciated. The design considered a center consisting of three sets in the highest positions of undulating terrain and a park in their center, underlining the character of the garden city. The first residential complex, named after the village of Háje, was built in 1973. The first inhabitants moved to new Háje in 1976. In addition to multi-storey residential houses and some large blocks, terraced houses also grew. The schools, nurseries and kindergartens, sales centers, medical and accommodation facilities, garages gradually became small parts between the apartment buildings.

At the end of the century, apartment buildings were regenerated. These days the new buildings are being added next to the old ones.




ORIGINAL PLAN



EVOLUTION OF THE SITE AT THE OTROPHOTO MAPS




1966

100 m 

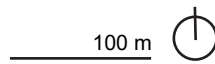


1975

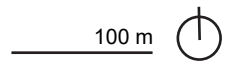
100 m 



1988



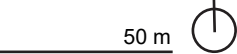
1996



CURRENT SITUATION



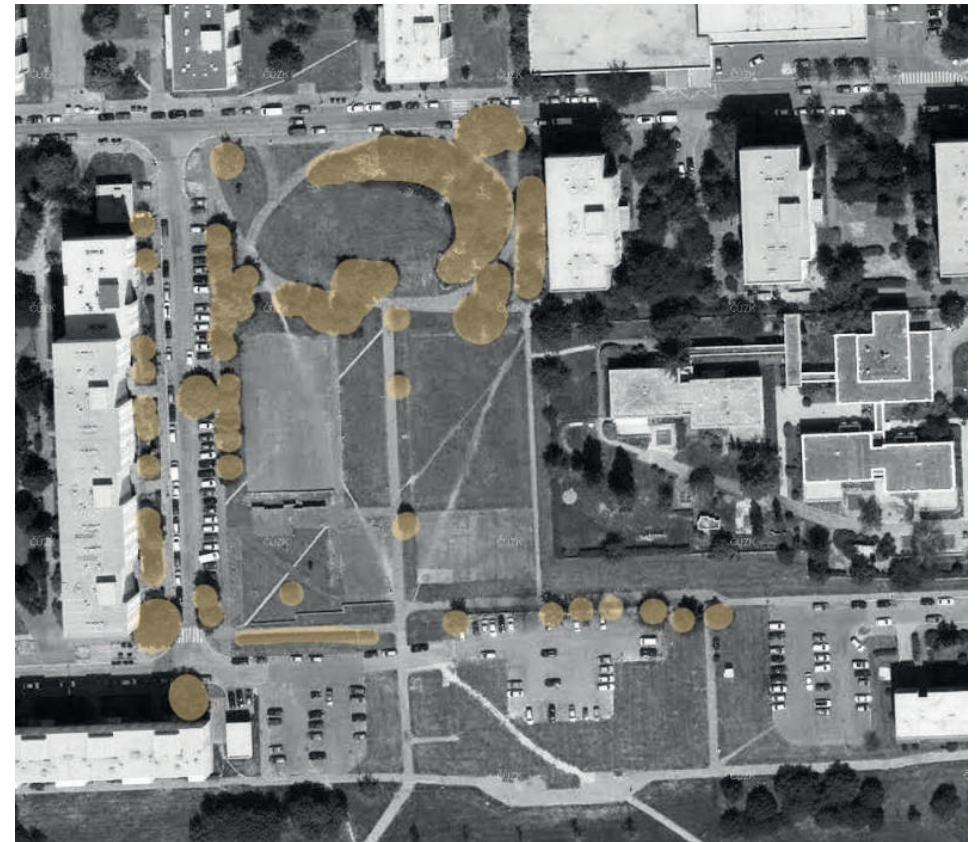
2021




CURRENT VEGETATION

Acer negundo
Acer platanoides
Acer pseudoplatanus
Ailanthus altissima
Betula pendula
Cartaegus monogyna
Fraxinus excelsior
Picea abies
Pinus nigra
Prunus avium
Prunus cerasifera
Prunus mahaleb
Sorbus aria
Tillia cordata

Cotoneaster dammeri
Forsythia x intermedia
Juniperus sabina
Ligustrum vulgare
Lonicera tatarica



● current trees and bushes

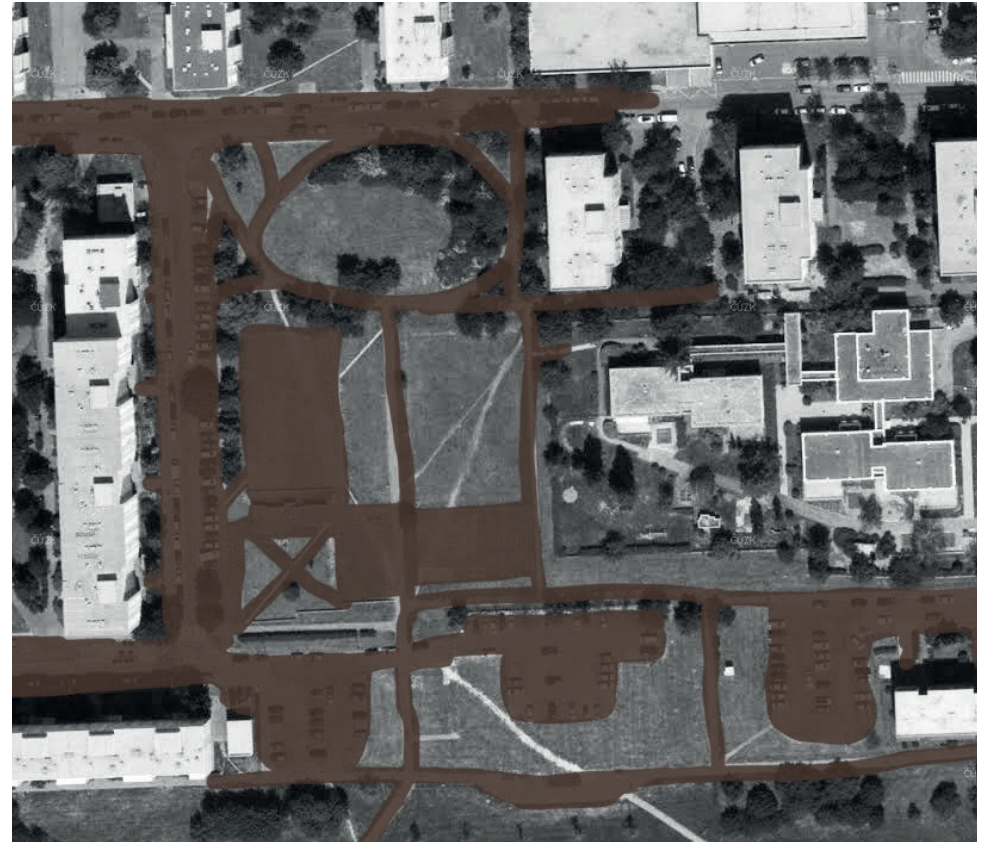
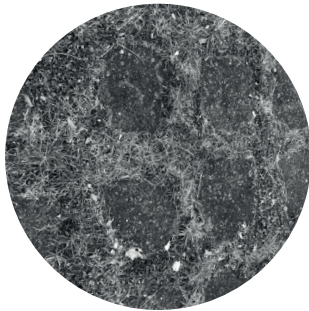
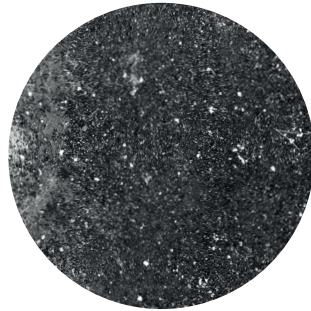
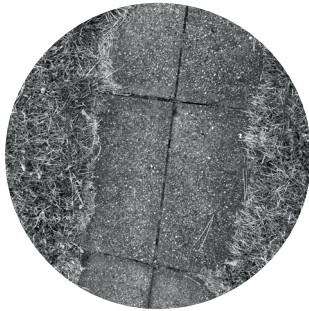
50 m 

MOVEMENT




● walking ● cycling ● parking → direction of car movement 50 m ↻

CURRENT SURFACES AND MATERIALS



● paved surfaces

50 m 

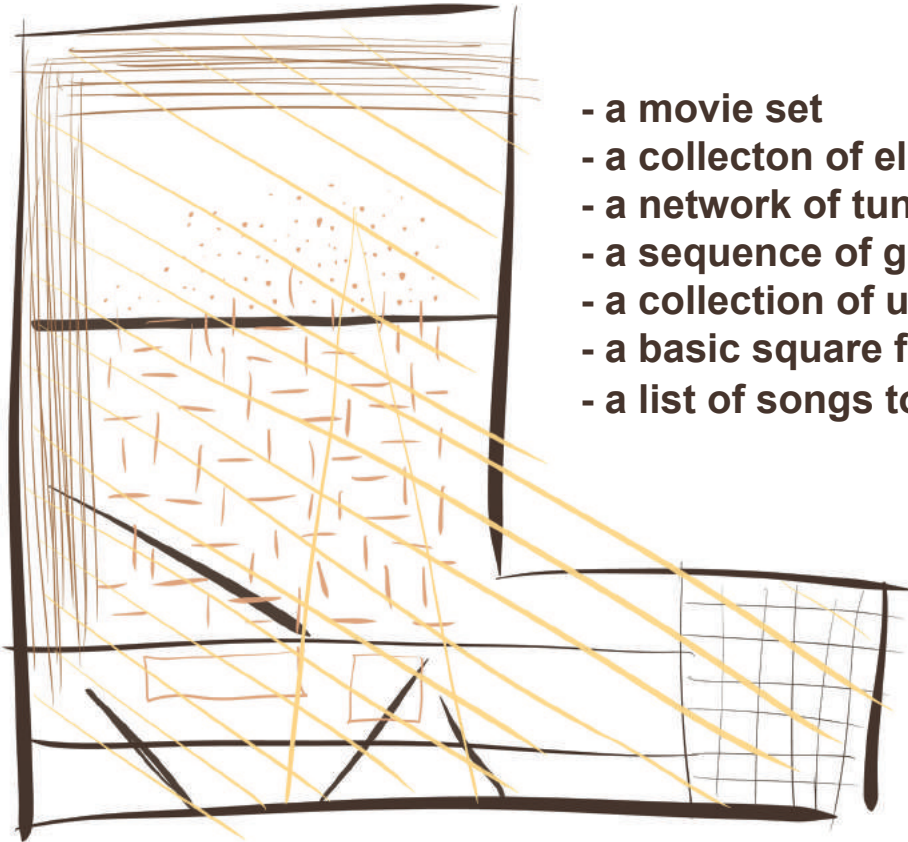
PHOTODOCUMENTATION





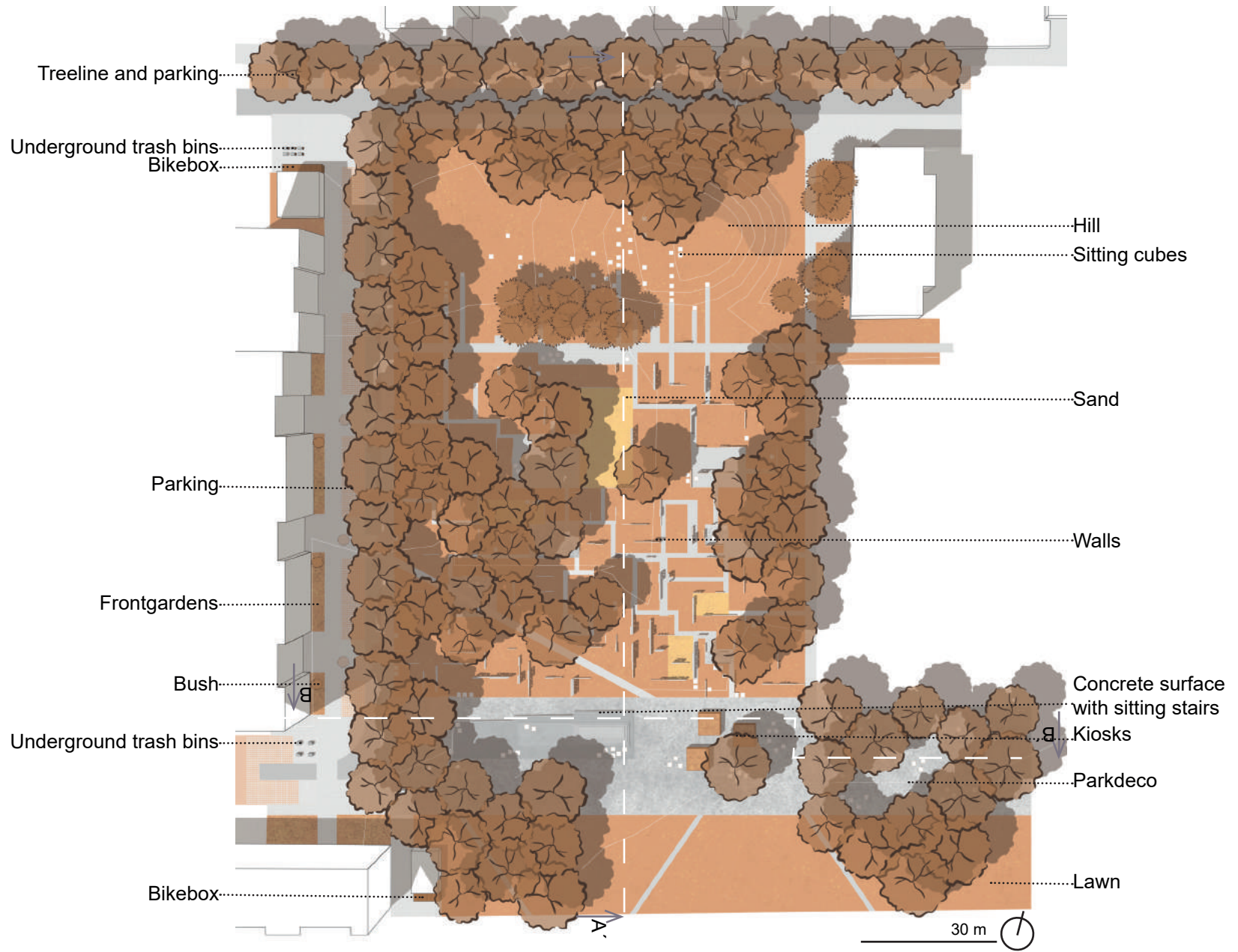
CONCEPT

THE SETS

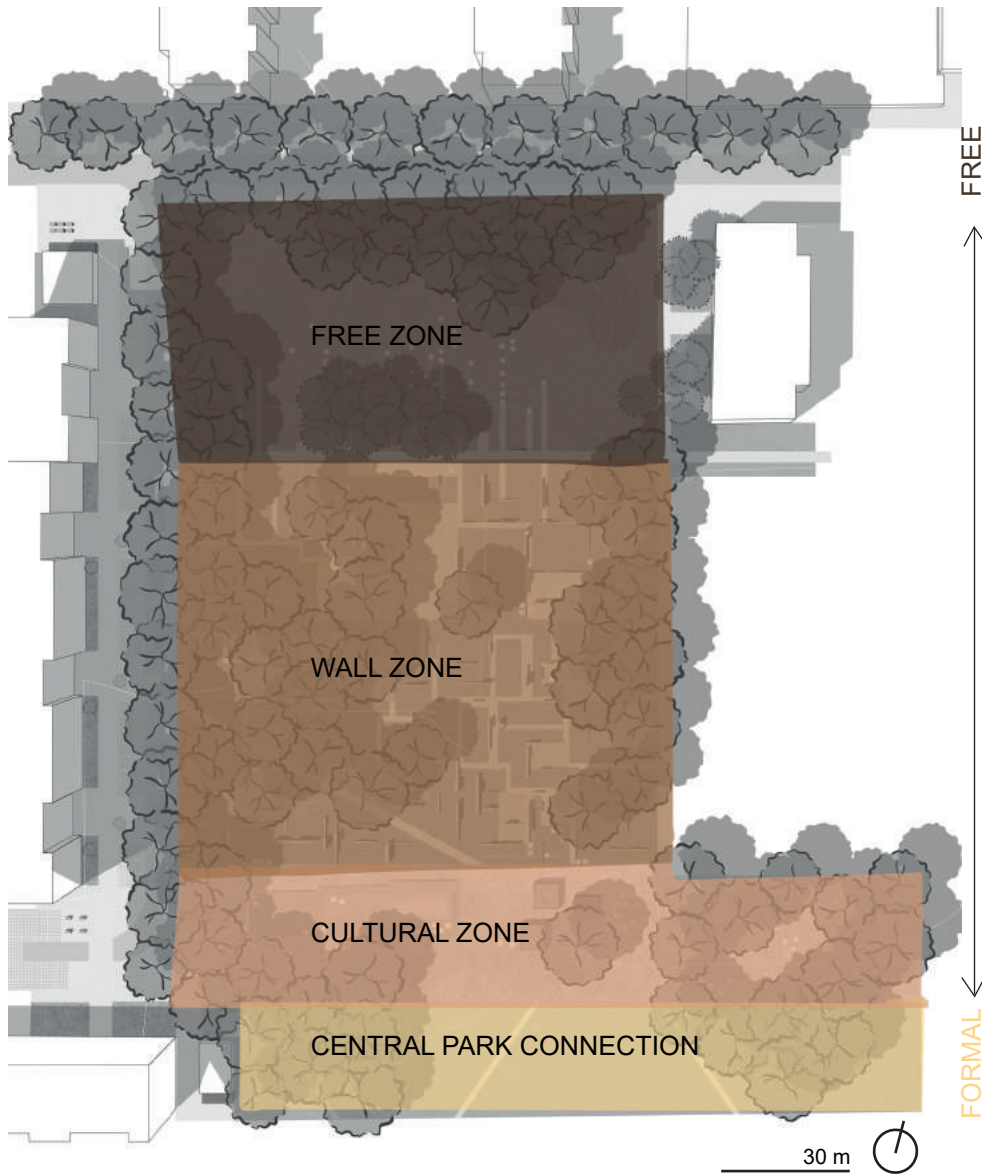


- a movie set
- a collection of elements
- a network of tunnels and numerous entrances made by animals
- a sequence of games
- a collection of unique values
- a basic square formation in square dancing
- a list of songs to be played during musical performances

MASTERPLAN



ZONE SCHEME



The whole area is divided into four main parts by the different characters. Each zone provides different experiences and activities. The closer to the Central park the more formal character it has.

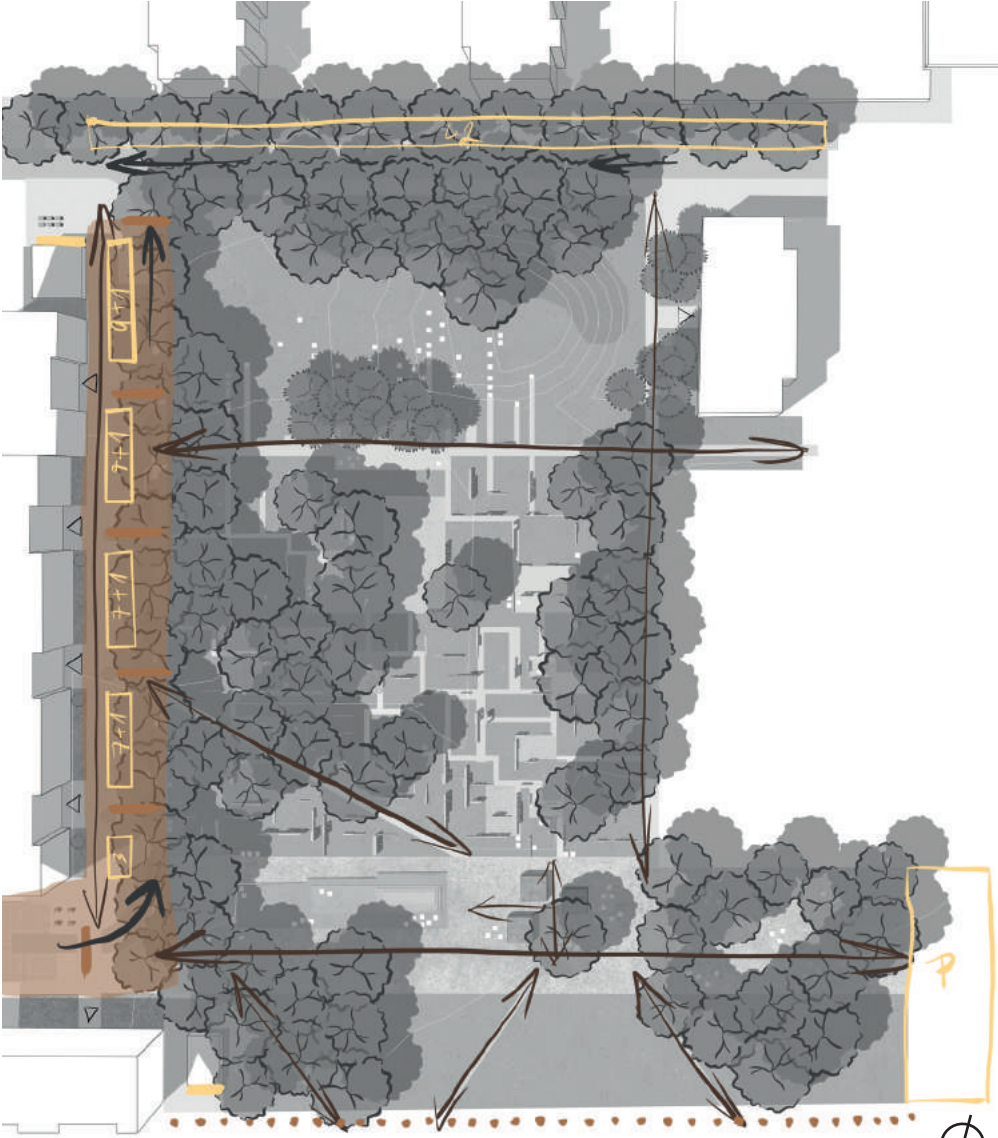
lookout run relax hide observe sledge

hide seek climb play gather create draw skate feel listen

listen talk sit relax feel perform eat drink observe meet


walk connect listen look

MOVEMENT SCHEME



The new concept of the movement in the designed area is developed. People can walk around the whole area. There are three connections to the existing paths in the Central park. The large surface is designed for the free movement in different directions, mostly to connect parking lot, buildings, street, kiosks and entrance to the wall zone. People in the wall zone move in the orthogonal ways. In front of the buildings is designed shared street with parking and priority of pedestrians.

- shared street → direction of pedestrian movement
- paved surfaces → direction of car movement

30 m 

VEGETATION SCHEME



The trees frame the whole space and create feeling of protection from the high buildings. The second principle are the crumbling diagonals which add more dynamic to the strict orthogonal space. There are also groups of the existing pinuses.

One of the main criteria for selecting tree taxons was their resistance to the urban environment. It is important that they tolerate higher temperatures and less water.

All trees have a soft and light structure. This is important because their leaves create a soft flickering light. The trees have different shades of yellow in autumn so they complement the colors of the surrounding buildings.



Zelkova serrata



Castanea stiva



Celtis australis



Ostrya carpinifolia

FRONT GARDENS

The extensive flower beds are designed for the front gardens. Species are drought resistant and maintenance-free. Entrance of each building is highlighted by the *Syringa vulgaris* in different colour.



Carex pendula



Diervilla sessiliflora
'Dise'



Salvia glutinosa



Phlomis russeliana



Bistorta amplexicaulis
'Speciosa'



Geranium sanquineum
'Tiny Monster'



Anemone blanda
'Splendour'



Eranthis hyemalis



Syringa vulgaris

HERBAL LAWN

The herbal lawn is combination of grass and herbs, so it helps to increase biodiversity. The lawn is suitable for dry sites as it does not need special care. It is possible to mow it low and more often.

Grass: 96%: *Agrostis capillaris* 'Polana' 3%, *Cynosurus cristatus* 'Rožnovská' 7%, *Festuca rubra rubra* 'Tagera' 36%, *Festuca rubra trichophylla* 'Viktorka' 15%, *Festuca rubra commutata* 'Zulu' 10%, *Festuca trachyphylla* 'Dorotka' 10%, *Poa pratensis* 'Balin' 15%

Herbs: 3,5%: *Achillea millefolium* 0,1%, *Dianthus deltoides* 0,5%, *Galium album* 0,1%, *Galium verum* 0,3%, *Leontodon hispidus* 0,2%, *Leucanthemum vulgare* 0,5%, *Plantago media* 0,3%, *Prunella vulgaris* 0,7%, *Ranunculus bulbosus* 0,2%, *Sanguisorba minor* 0,2%, *Thymus pulegioides* 0,4%, *Lotus corniculatus* 'Táborák' 0,2%, *Medicago lupulina* 'Ekola' 0,2%, *Trifolium repens* 'Pirouette' 0,1%



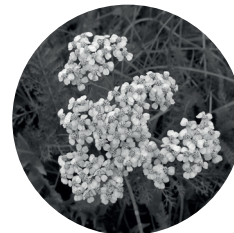
Agrostis capillaris



Festuca rubra rubra



Lotus corniculatus



Achillea millefolium



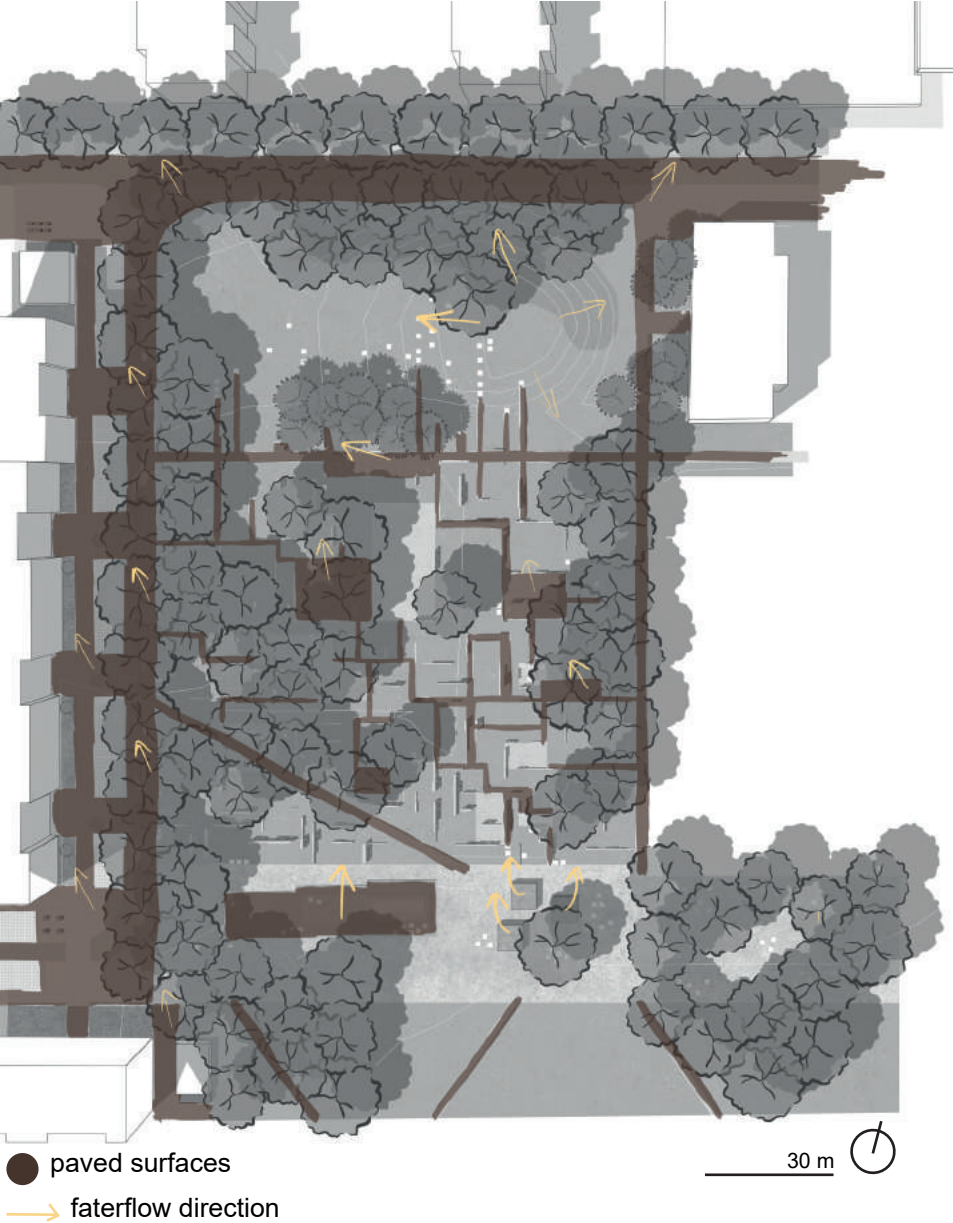
Galium verum



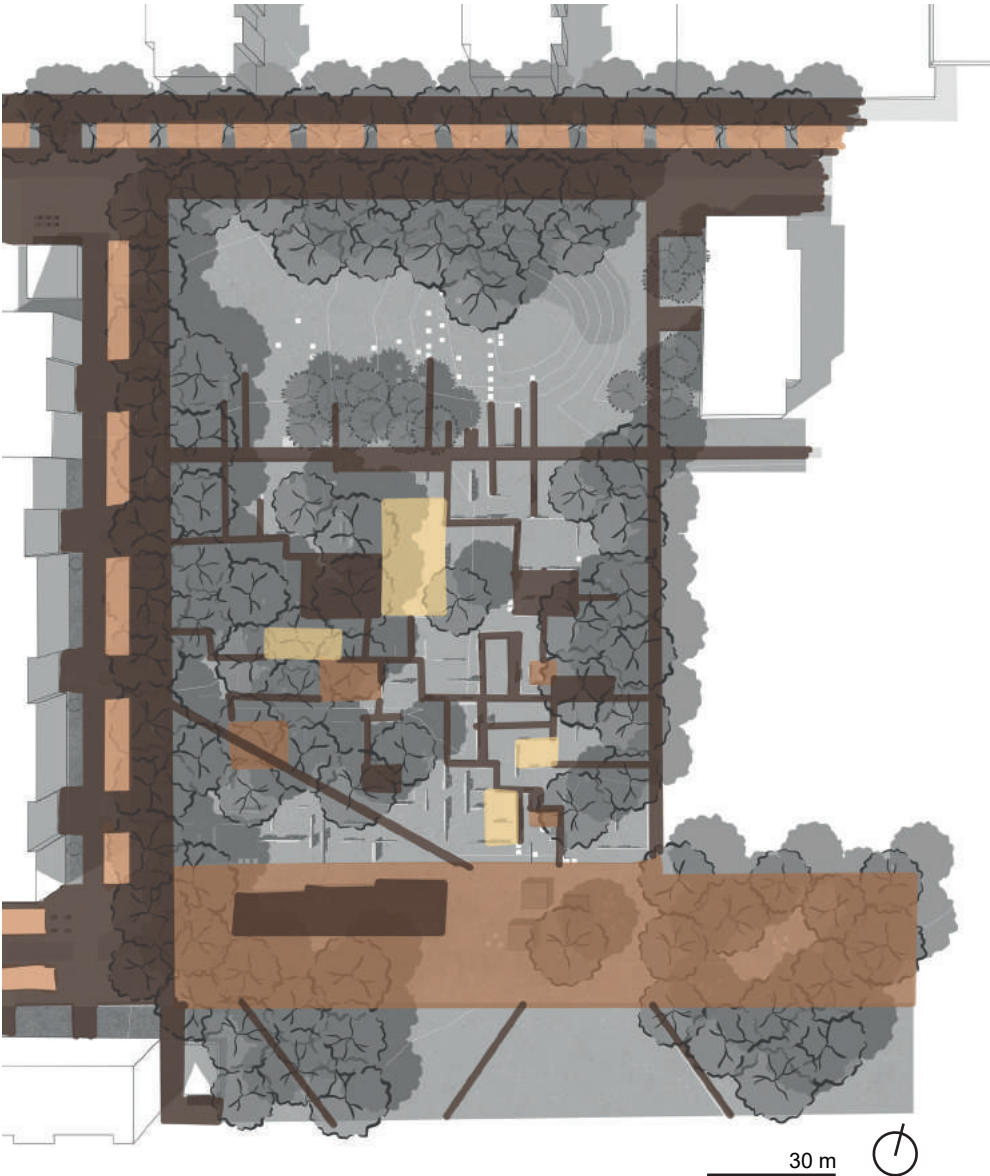
Leucanthemum vulgare

RAINWATER MANAGEMENT SCHEME

Rainwater from the paved surfaces is used for watering the trees and lawn. The slight slope of the terrain is used to bring water from the sidewalks into the unpaved grassy area the with trees or directly to the trees in the paved area.



SURFACES SCHEME

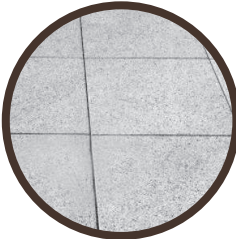


The different types of the surfaces are used. The roads are covered by the asphalt. The sidewalks and pathes are paved with the small-format paving. The places for parking are covered by grass paving where water can soak in. The large surface is covered by the grey parkdeco and concrete around the sitting stairs. Parkdeco is also used in the small places between the walls. There are four places with snad.

Impermeable surfaces



asphalt



concrete paving

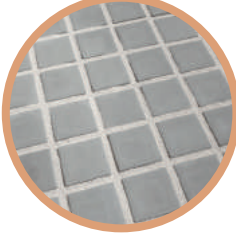


concrete

Permeable surfaces



parkdeco

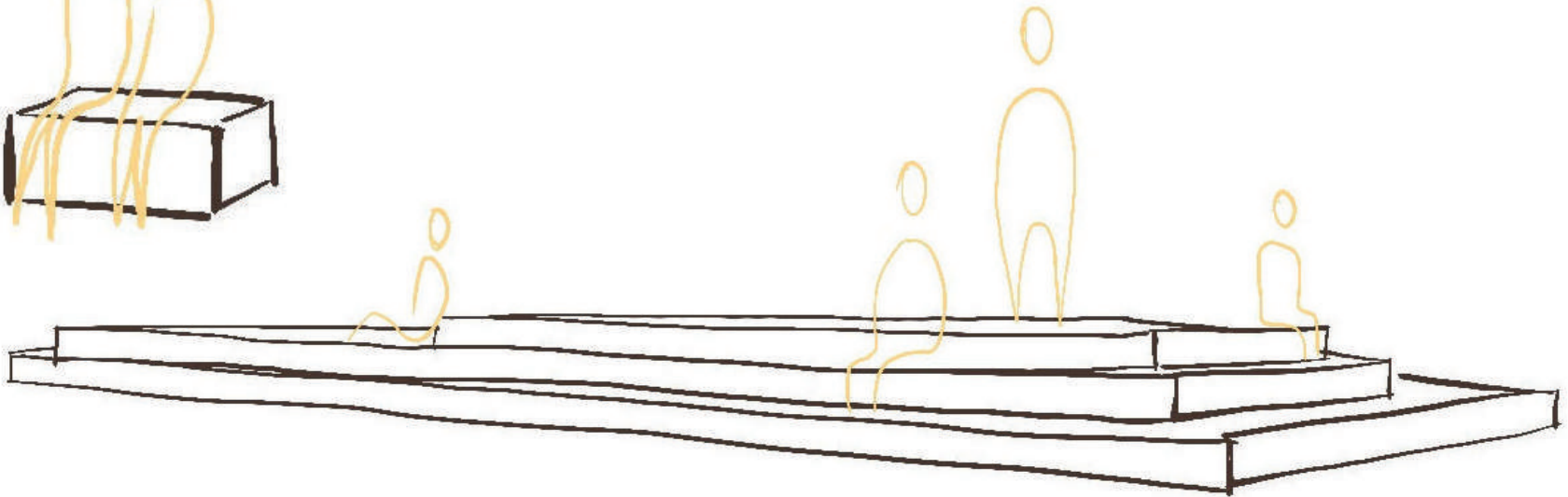
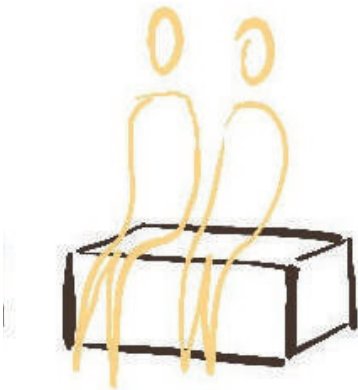
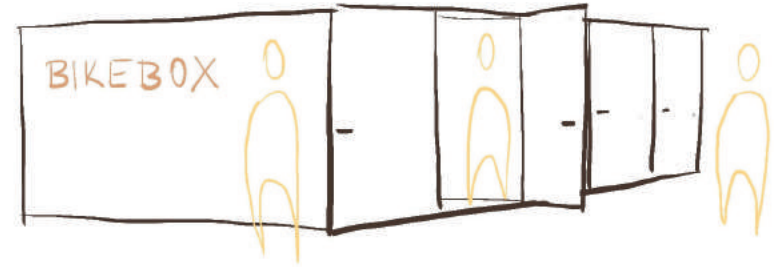
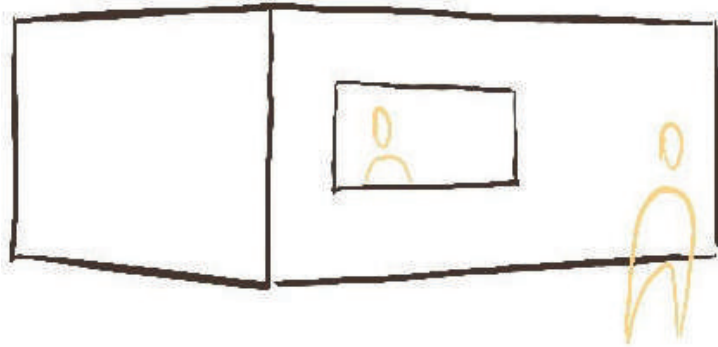


grass paving

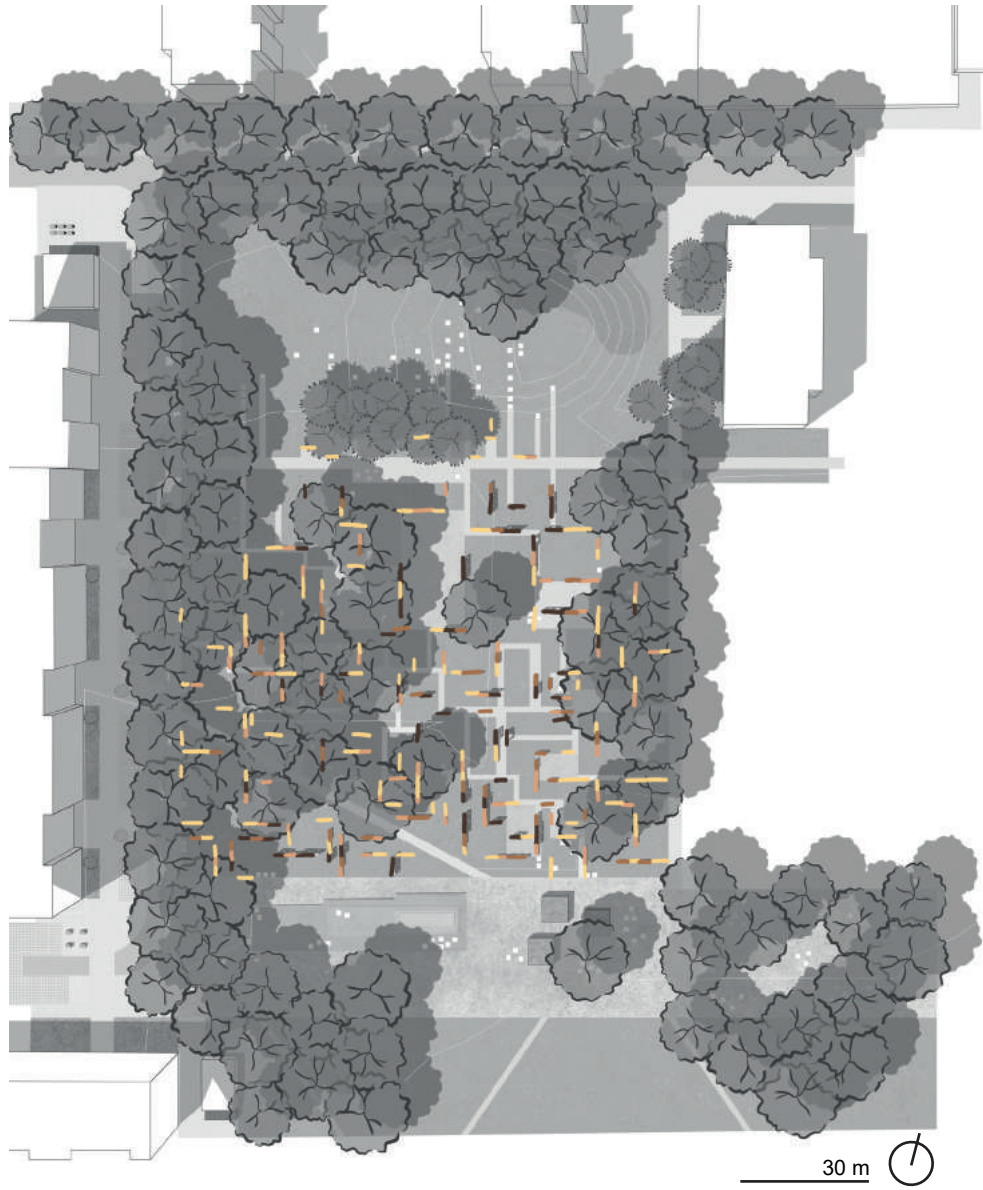


snad

DESIGN ELEMENTS



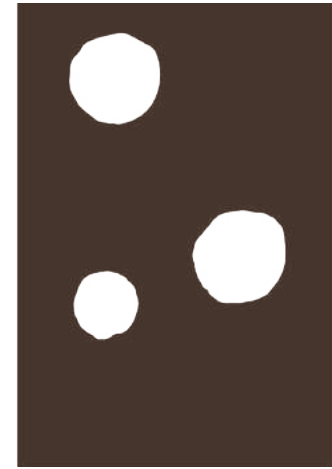
WALLS



3 m



2 m



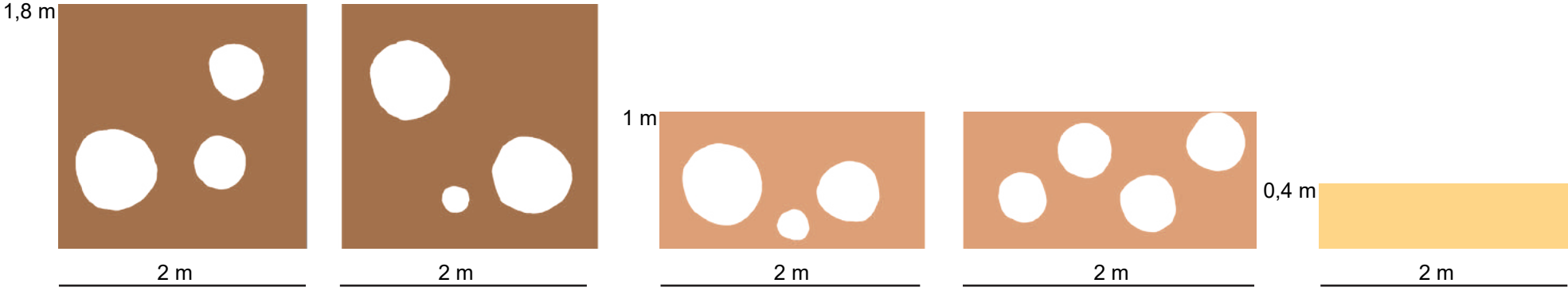
2 m

The main element of the space is the concrete wall with holes in it. It is inspired by the wall which is already there.

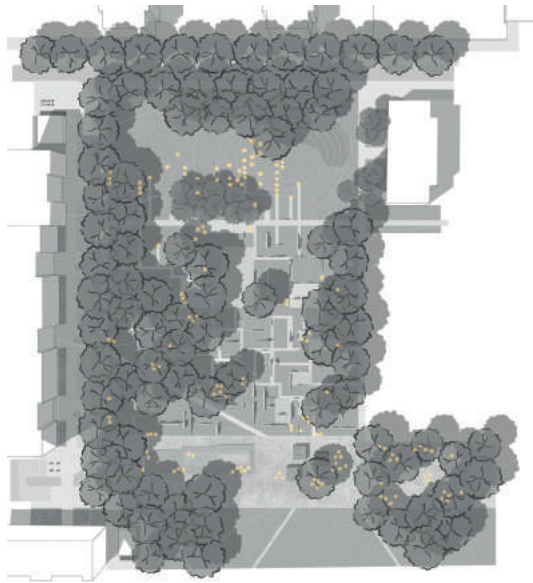
There are four heights of the walls. The highest is 3000 mm, the second is 1800 mm, the third 1000 mm and the fourth 400 mm. The heights correspond with the human scale so people do not feel overgrown. There are 7 types of the walls with different hole arrangements.

The holes in the walls allow to see through the walls and even walk or crawl through.

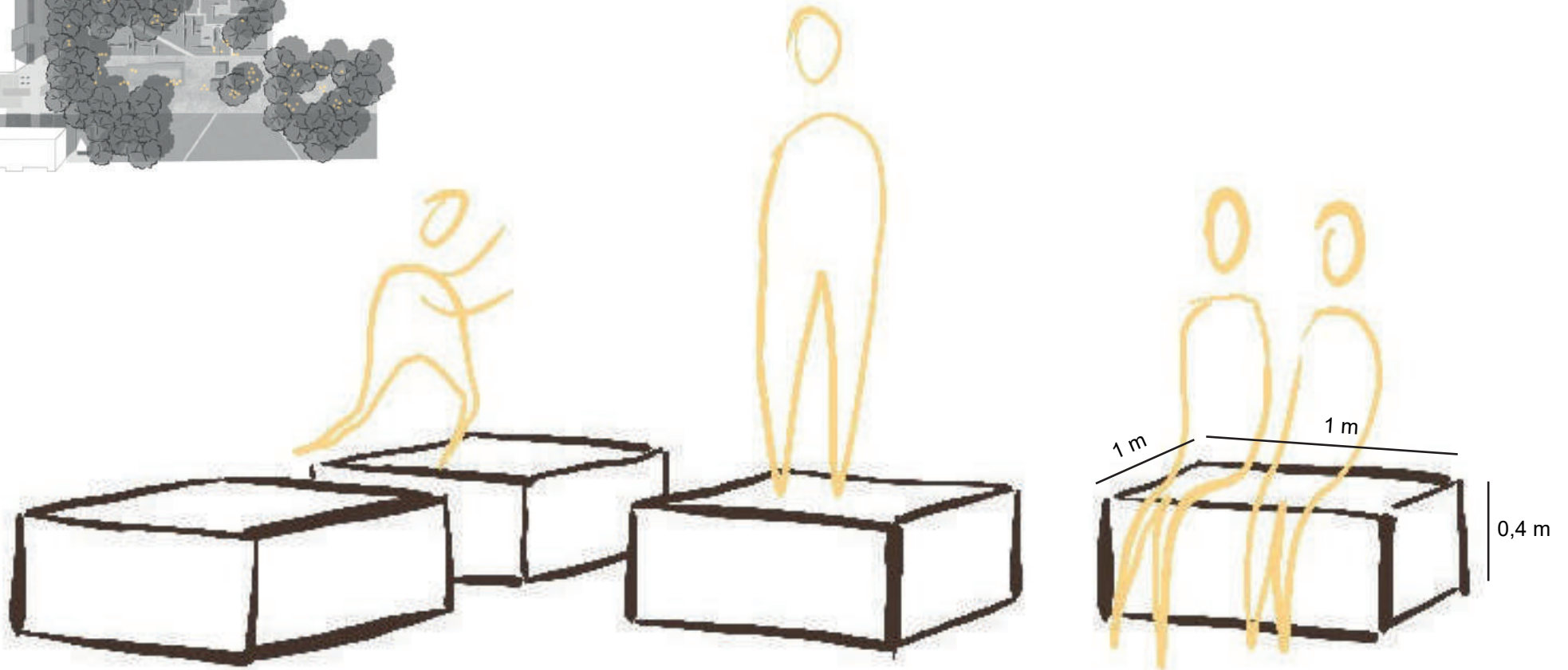
The walls create various rooms and the whole area works as a house without a roof. There are rooms for different sports or just meet friends.



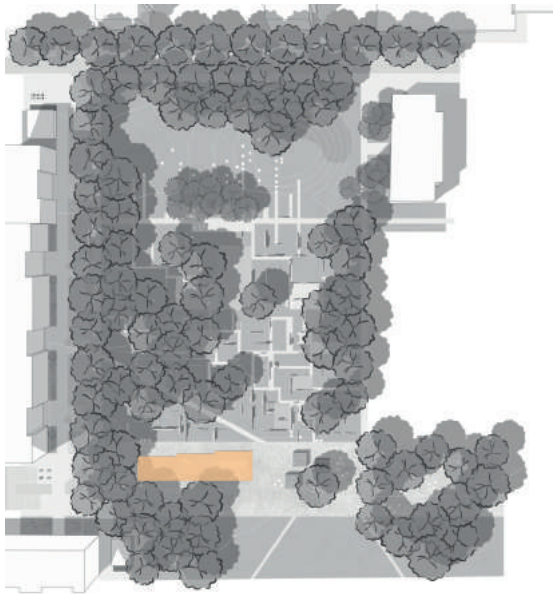
CUBES



The cubes made of concrete connect the walls with the hill and the whole space. Their dimensions are 1000 x 1000 mm and 400 mm high so they provide spacious seat for one person or comfortable seat for two people (or even more?). The cubes can be used also as a multifunctional play element for jumping over, running around and more.

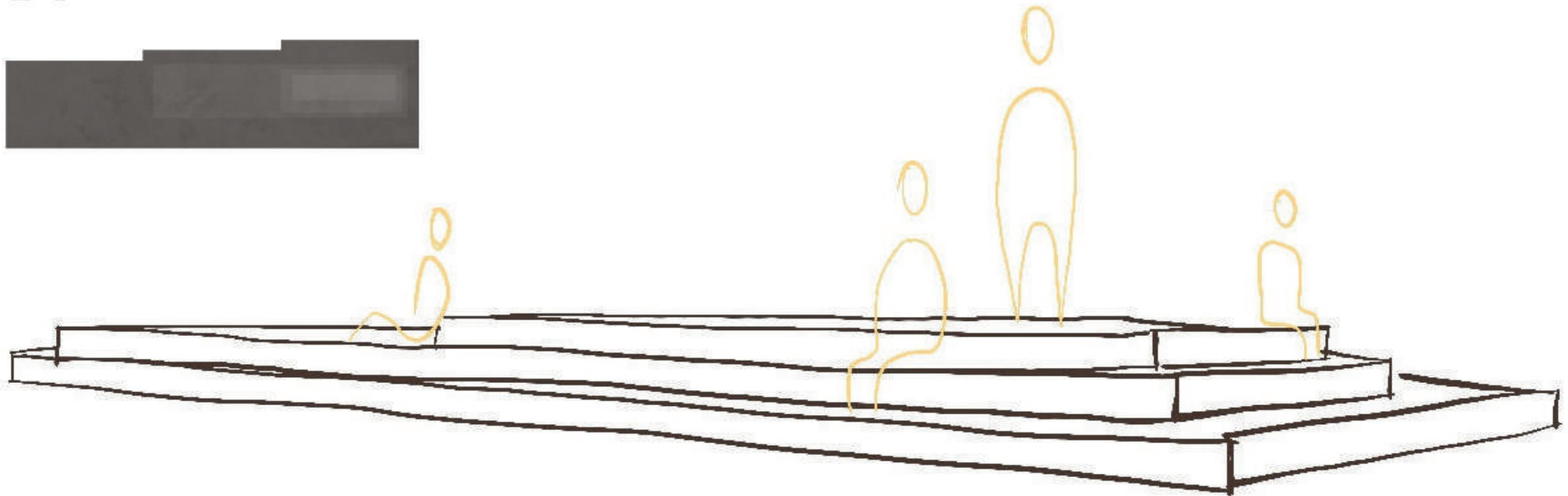


SITTING STAIRS



On the large concrete surface there are concrete sitting stairs with three height levels which can work as a two-way stage. It depends on the specific event what will happen there. It can be used as a regular stage where people are sitting or standing around and performance is happening on the top. Or it can work the other way. People are sitting on the stair and they look down to the performance on the concrete surface.

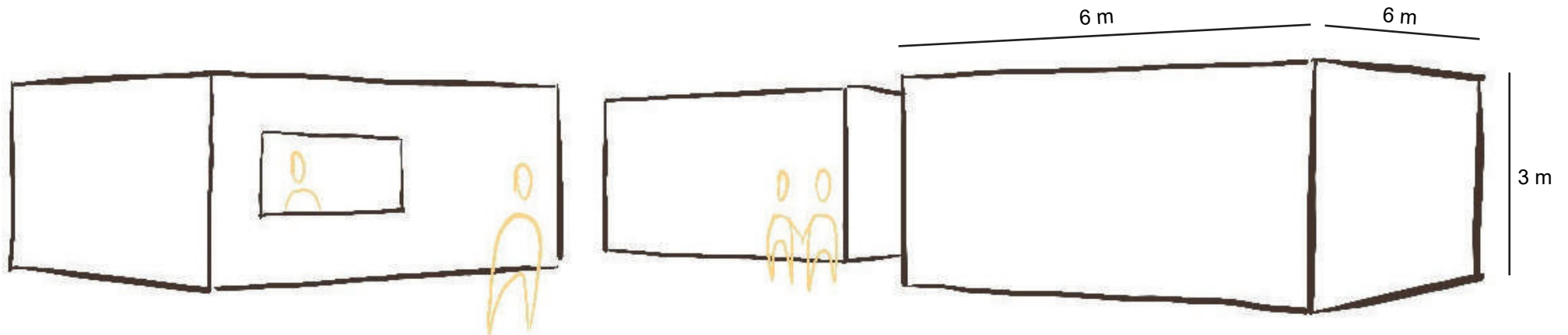
When there is no event it is a place where people can gather and relax.



KIOSKS



There are three types of wooden kiosks. First type is the regular kiosk where people can buy takeaway drinks and snacks. The second is public toilets. And the third is a sports equipment rental and a mobilier warehouse. The kiosks have the extensive green roofs.

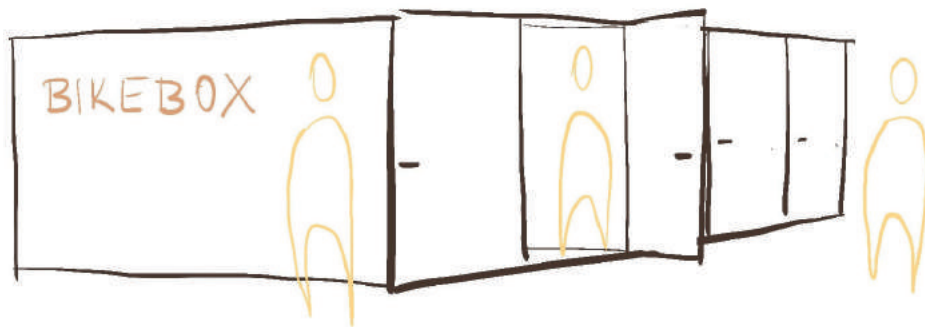


BIKE BOX

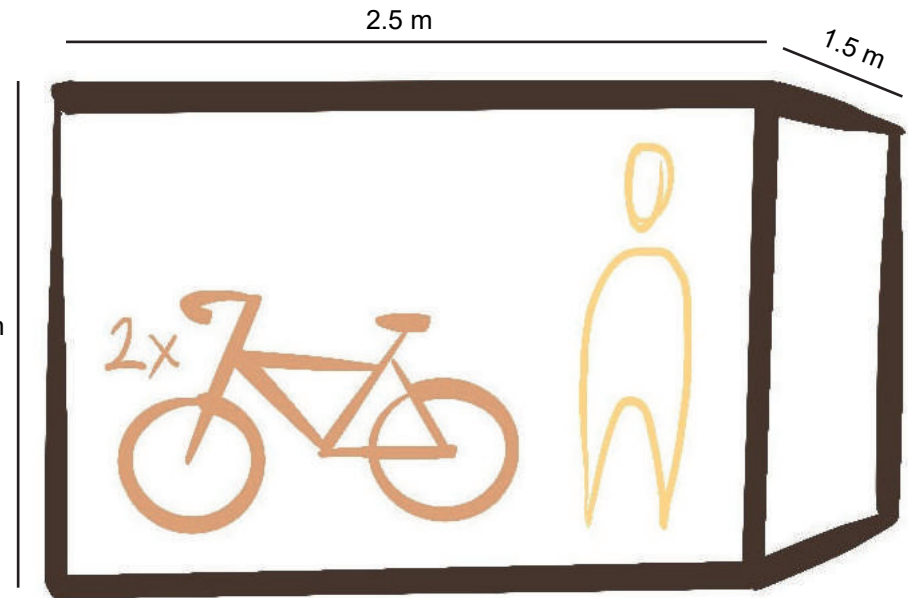


The bike boxes are designed there because the place is very well accessible by bike and the bike path goes through the Central park. The boxes are near important pathes and roads.

The box is big enough for two bikes and for storing some accessories as helmets and repairkit.



2 m

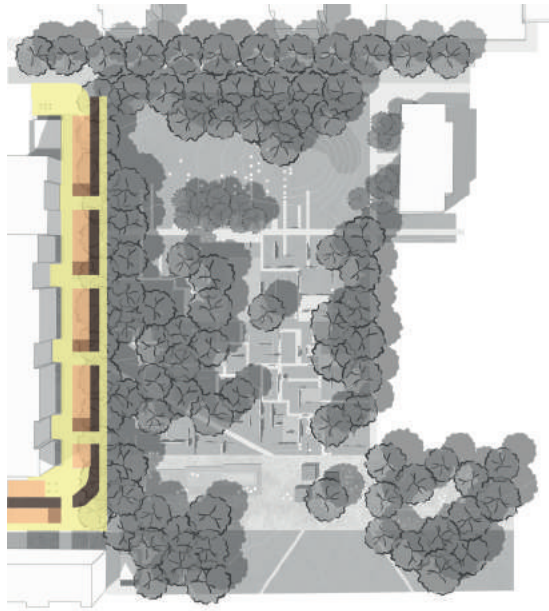


2.5 m

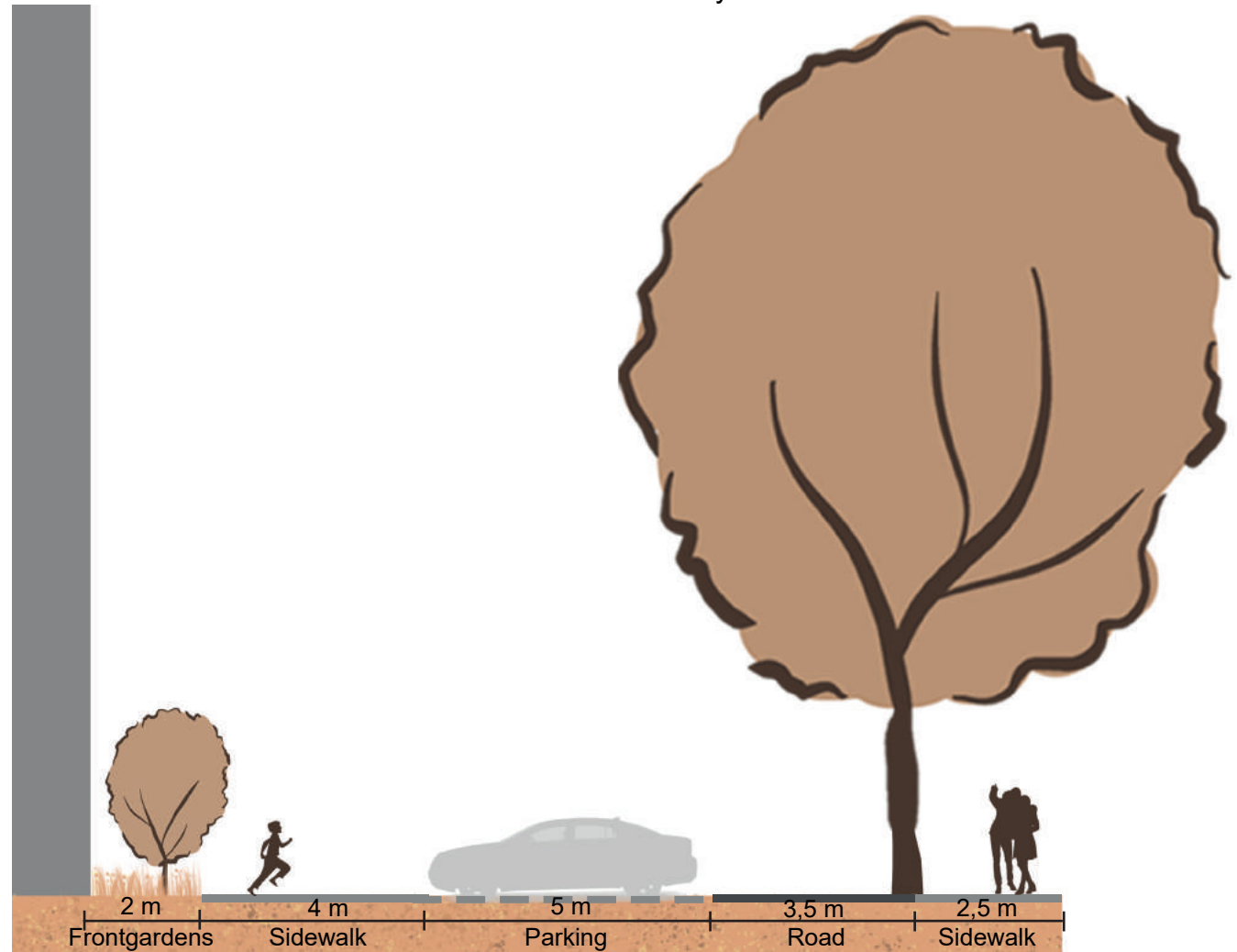
1.5 m

2 m

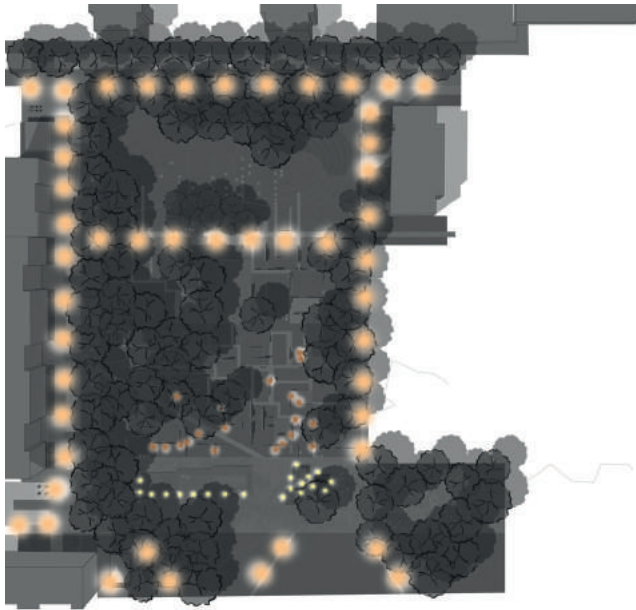
SHARED STREET



There is a concept of shared street with the priority of pedestrians around the buildings. The road, parking and the sidewalk have the same height level and the sidewalks cross over the one way road.



LIGHTNING



The different types public lightning create dfferent athmo-speres. Along the streets are used classical public lightning lamps. The walls are illuminated by the wall lights. The ground lights are used in the curtular zone and around the kiosks. There is one special room with outdoor living room lamp.

There are also darker places left for the animals.



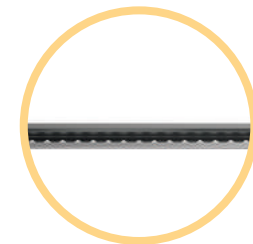
Livingroom lamp



Wall lightning



Public lightning lamp



Ground light

MOBILIAR

The simple mobilier is made of steel, concrete or wood. It adds small scale and new features to the public space.



Bench



Tree grille



Bike stand



Parking stop



drinking fountain



Water fog

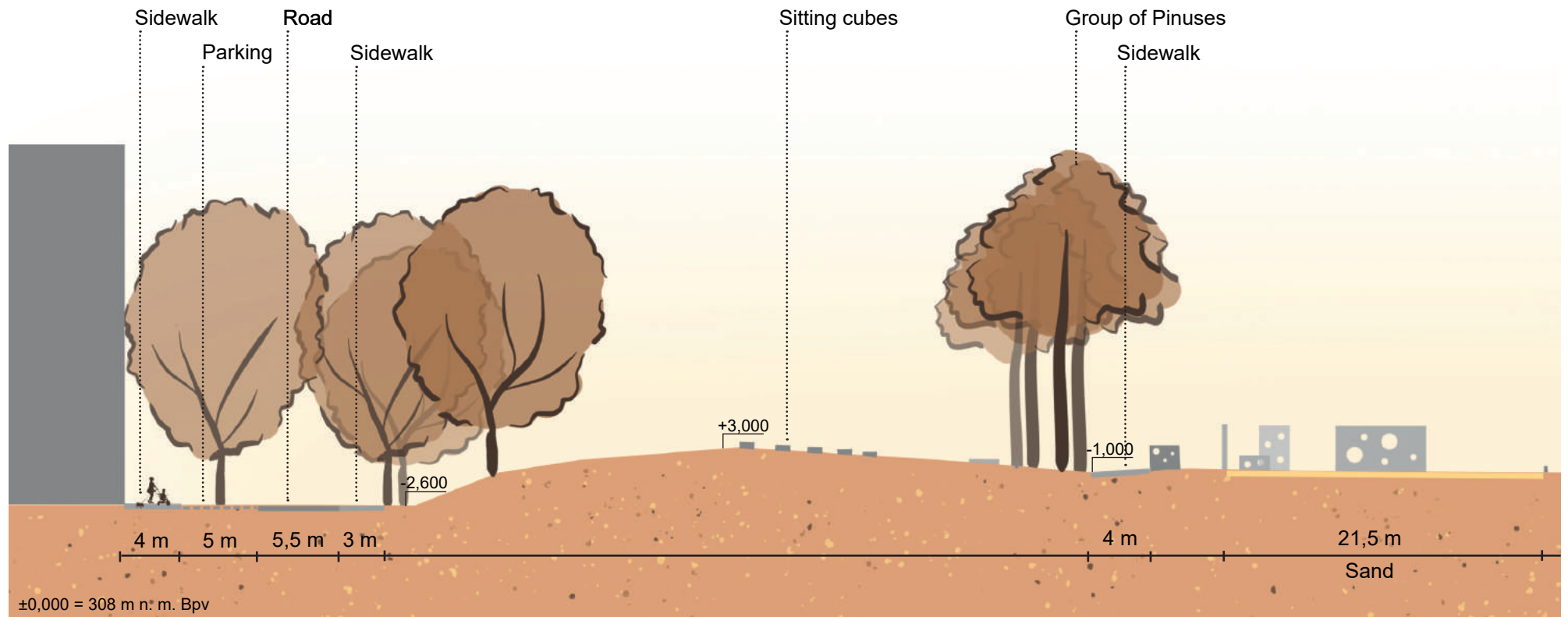


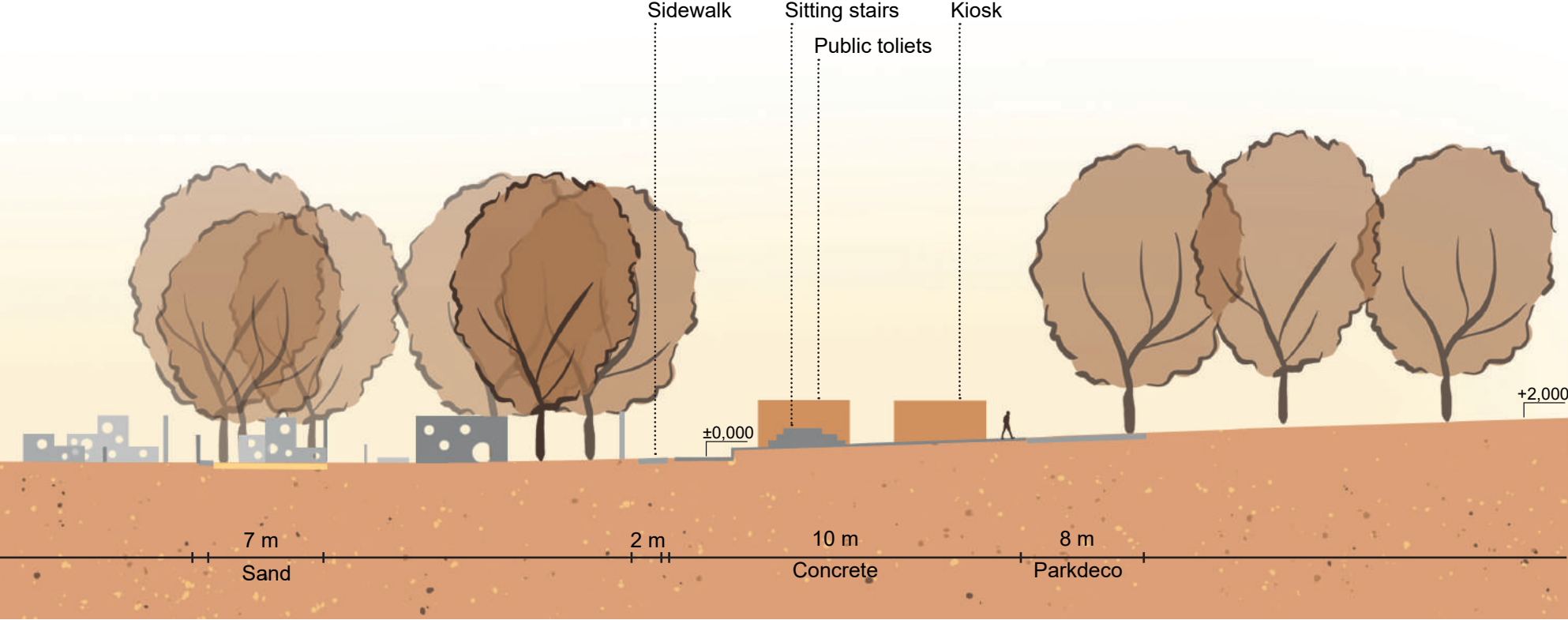
Underground trash bin



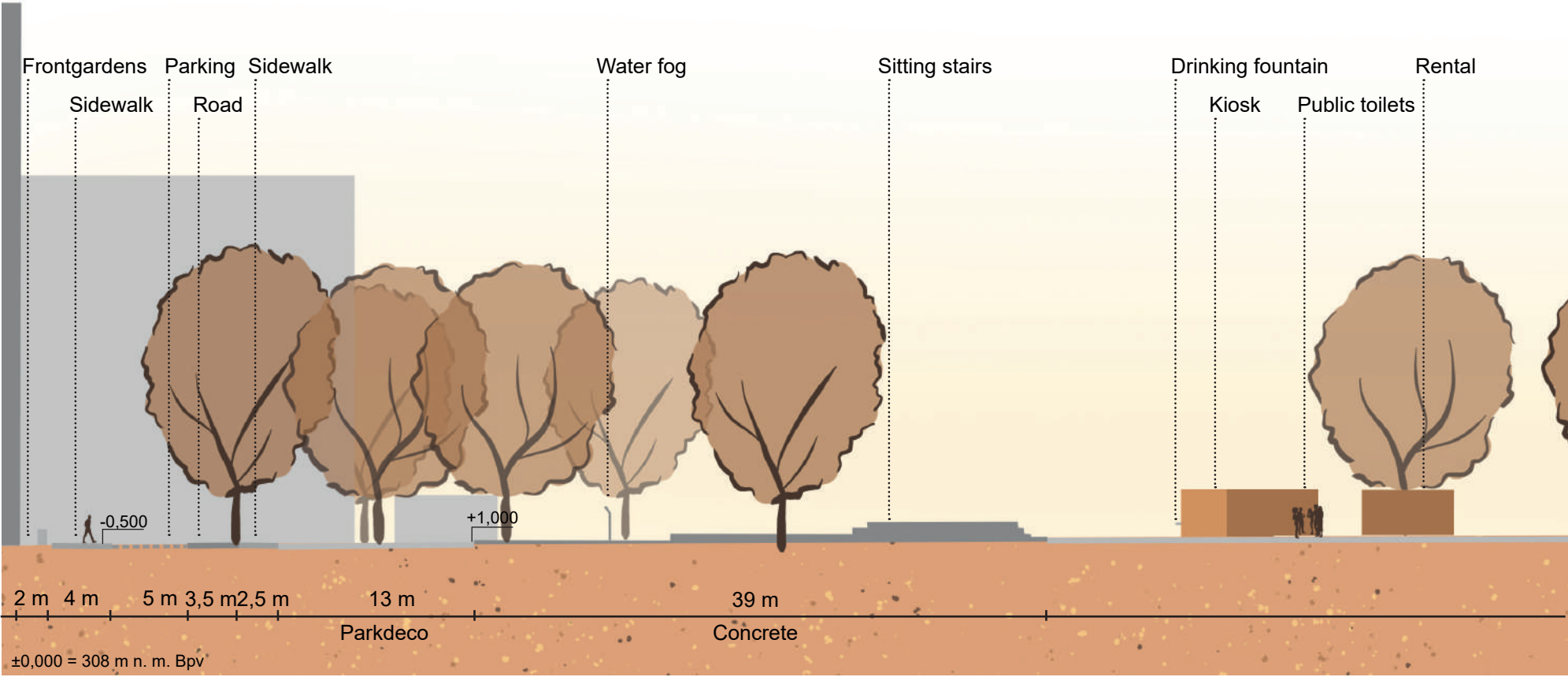
Trash bin

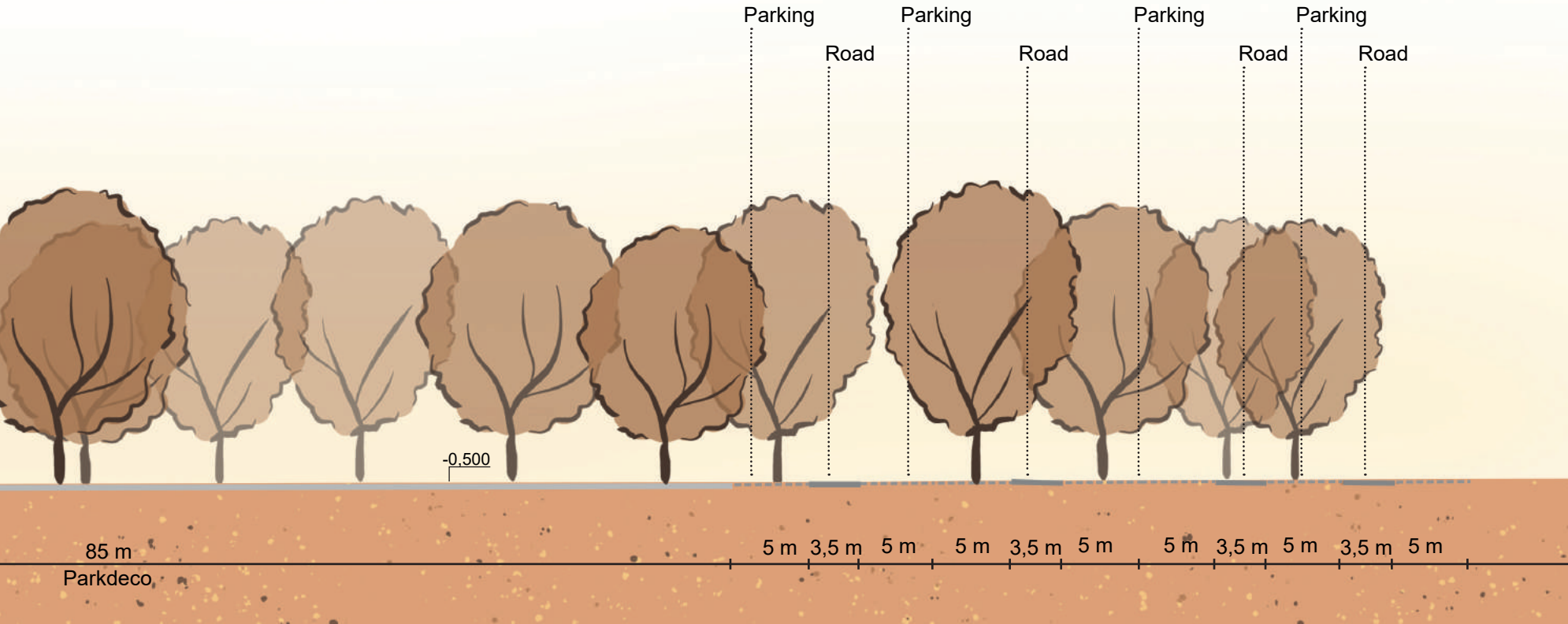
SECTION AA'





SECTION BB'







MODEL PHOTOGRAPHS



