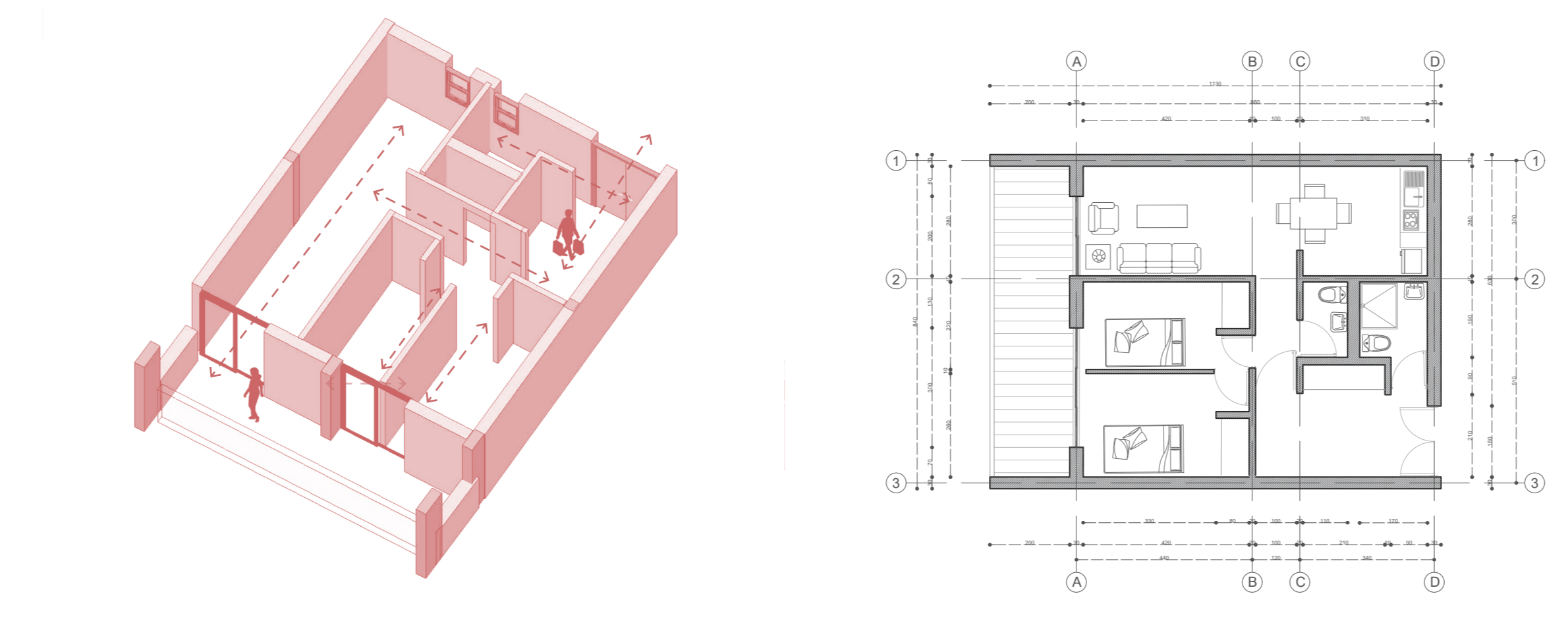
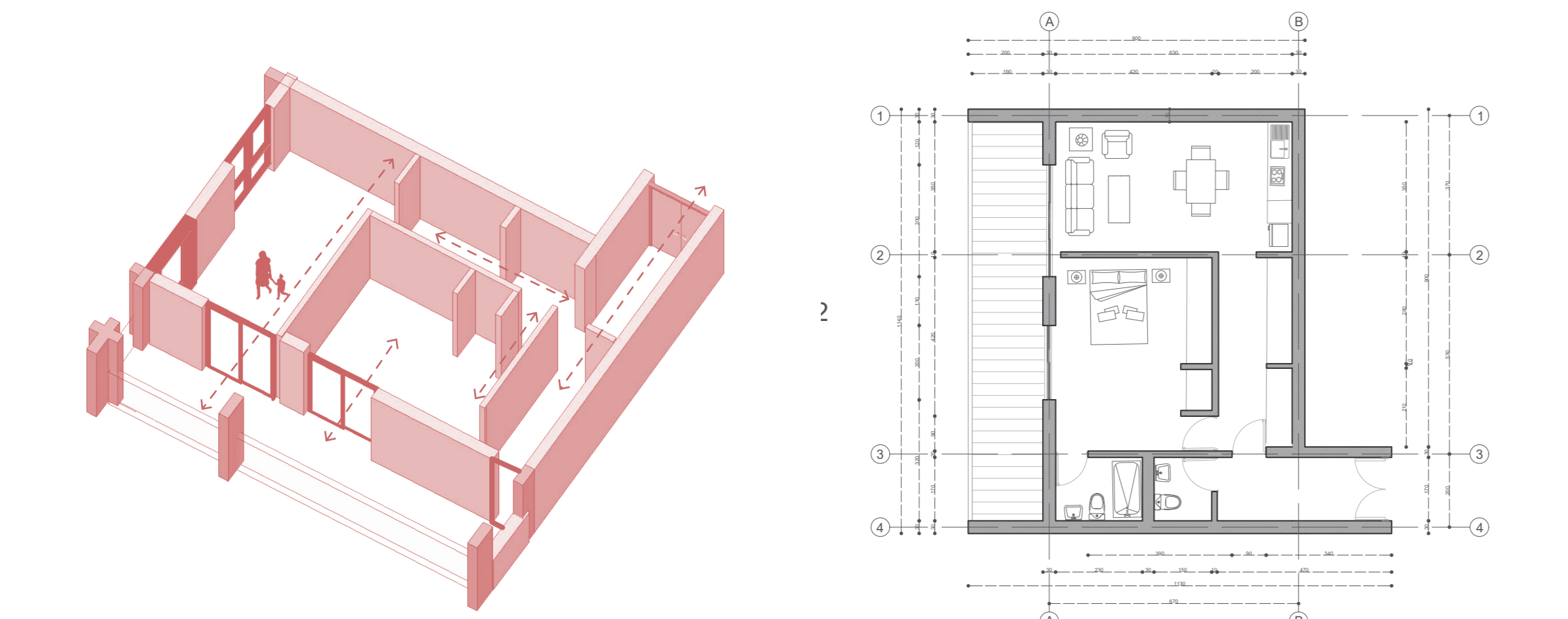
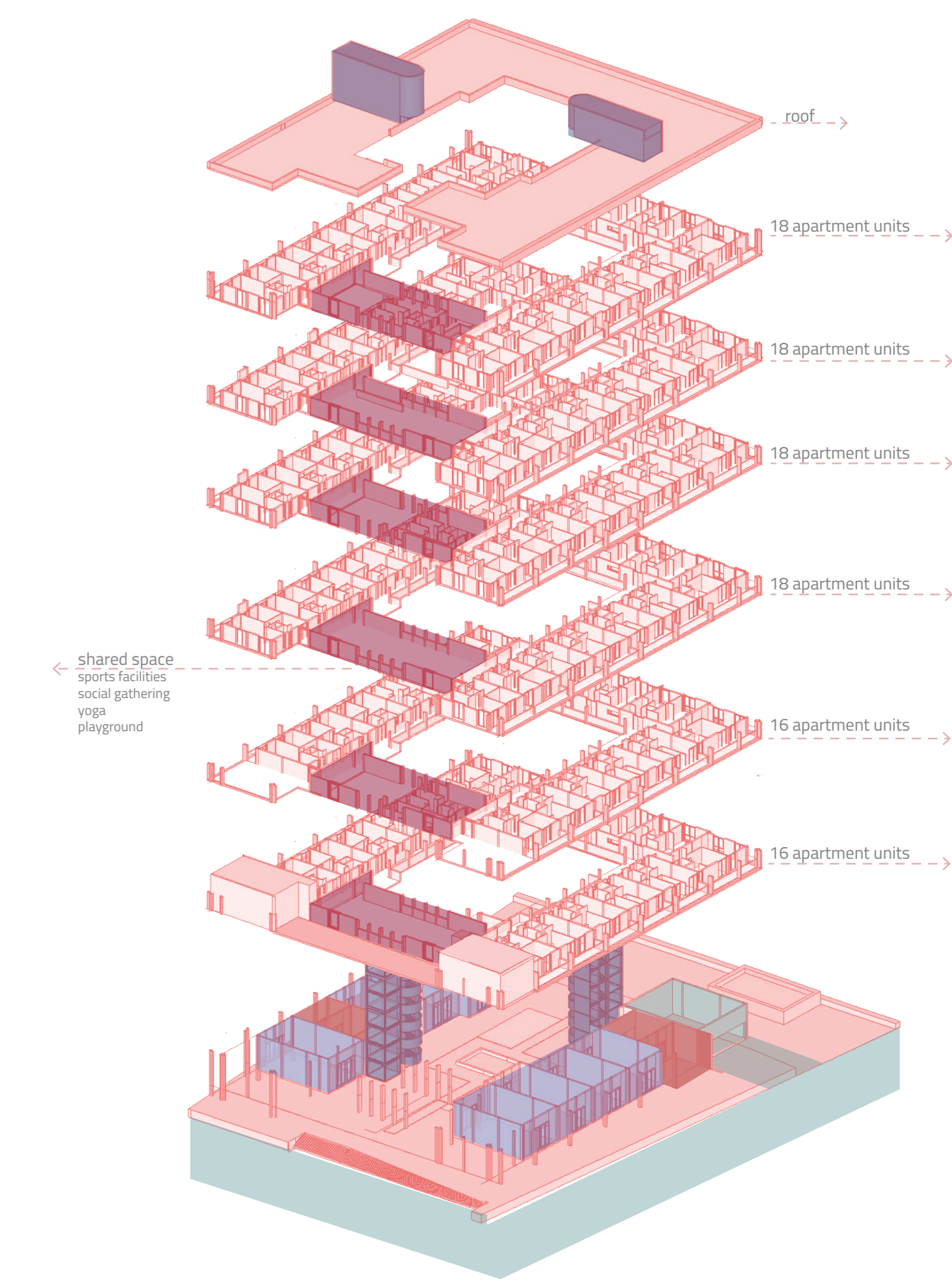
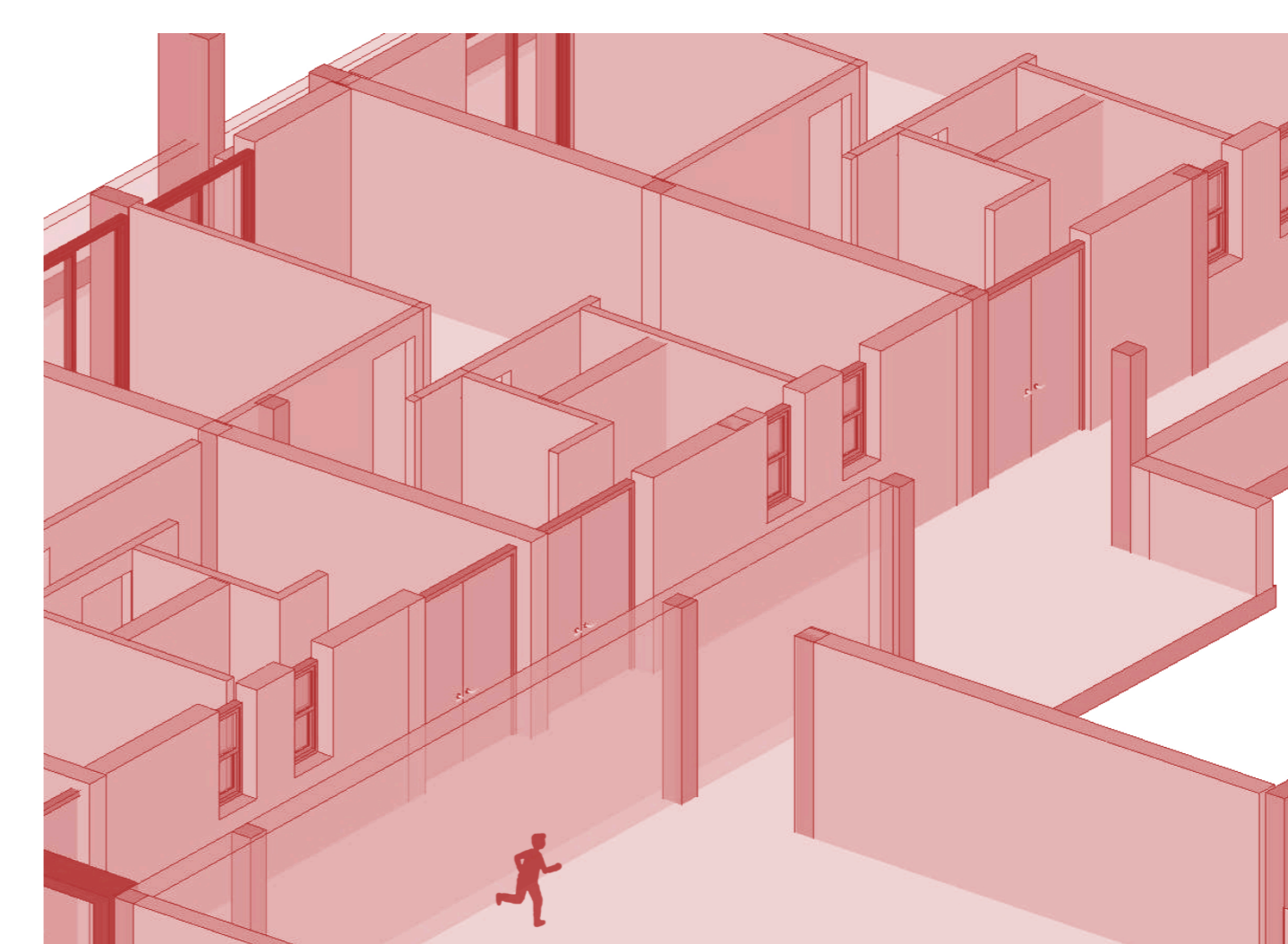
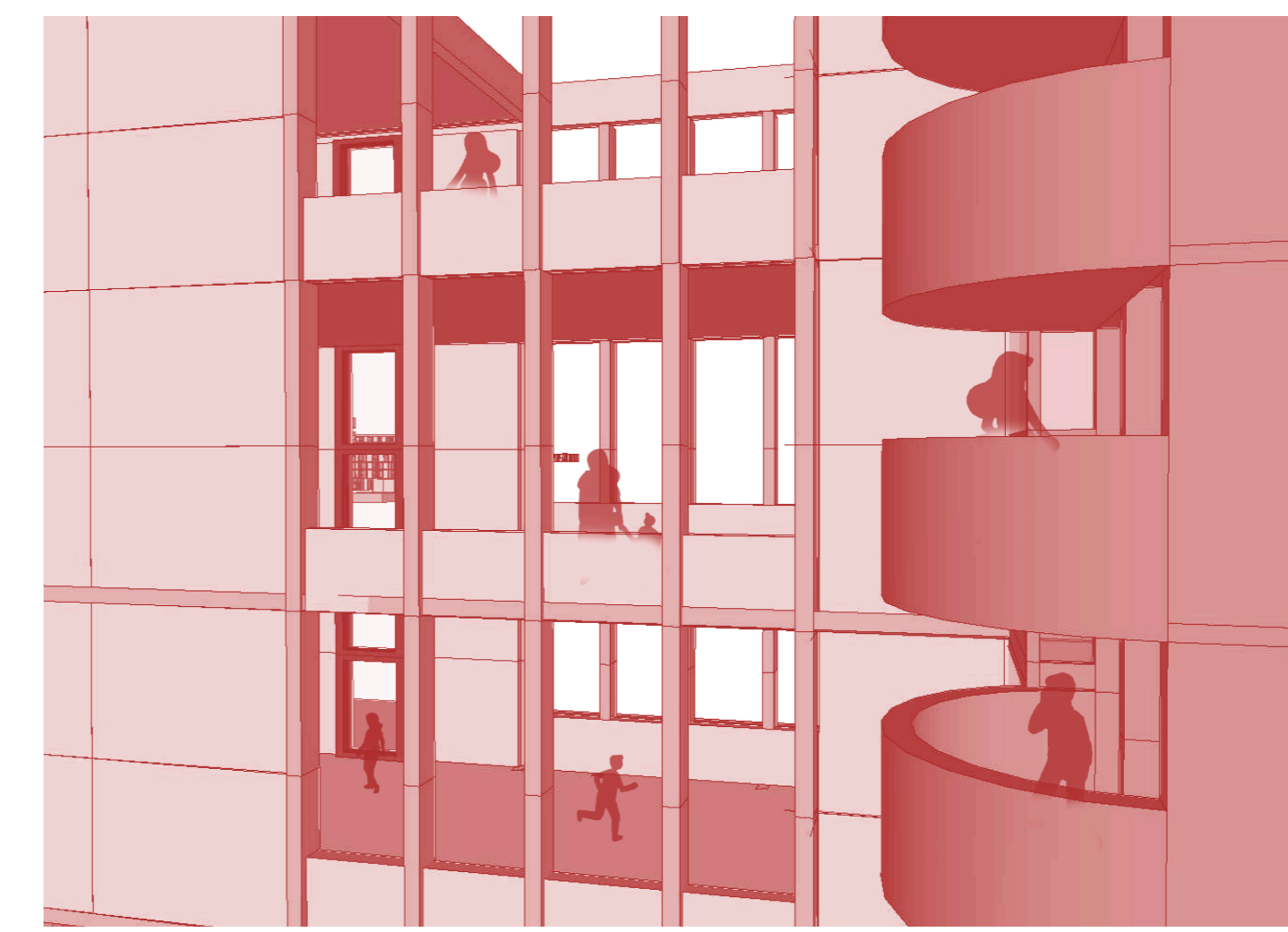
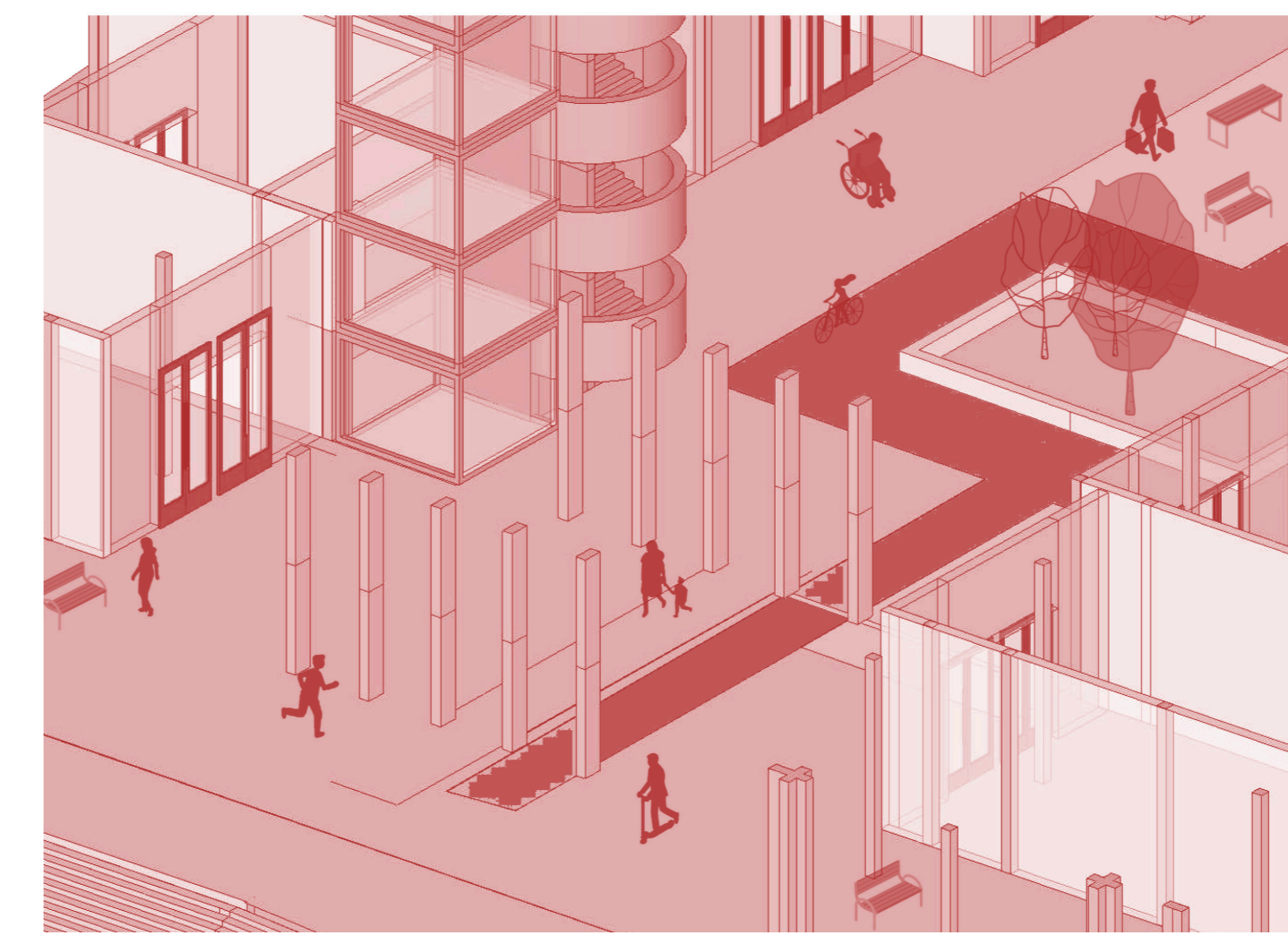
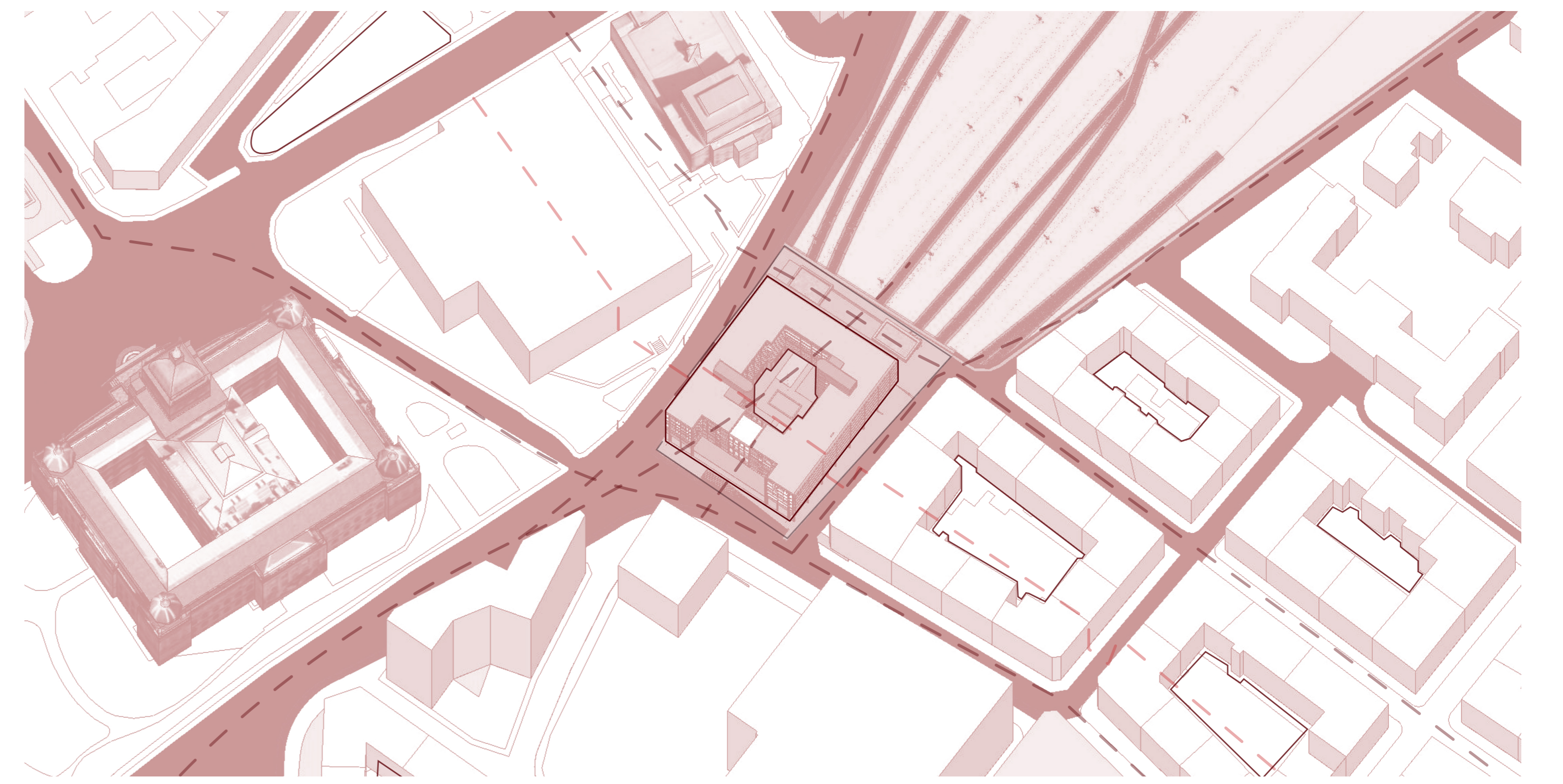




This project presents the idea of a feasible and buildable social housing building in central Prague. Sometimes, the solution to a problem is, in fact, building Prague serves as a reference and demonstrates the potential for growing social cohesion and connection. This is reflected in this project that meets the requirements and objectives set at the outset. Constructive feasibility is achieved using a structure that does not obstruct train pathways while maintaining the structural qualities needed to support a building and withstand various seasons and weather conditions.

Design prioritizes creating dignified and practical housing where the elements within can adapt to contemporary lifestyles and various types of families. Furthermore, the project promotes sustainable use of space with a responsible ecological footprint, proving that no space is too small if it is designed with respect for the inhabitants.



TYPOLGY 4

TYPOLGY 1

