



**VLTAVA FILM ACADEMY -**  
A Film School proposed by the banks of Vltava river in Holešovice, Prague.

The site integrates the panoramic views of the river and existing urban fabric to create a dynamic balance between functions, aesthetics and nature offering a film campus in the heart of Prague. The distinctive shape of the building renders a contemporary tone for the urban envelope but blends in with its brick facade.

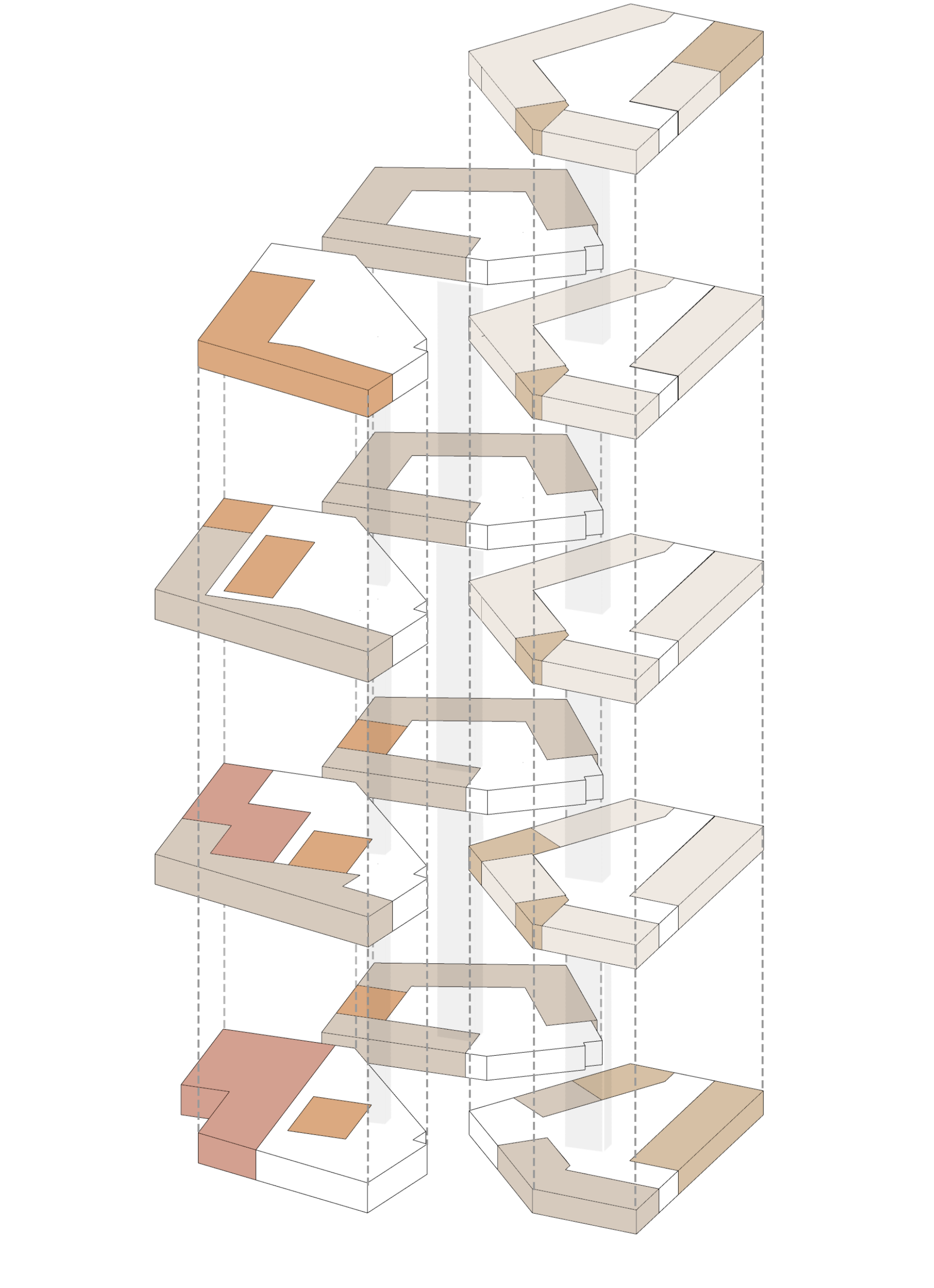
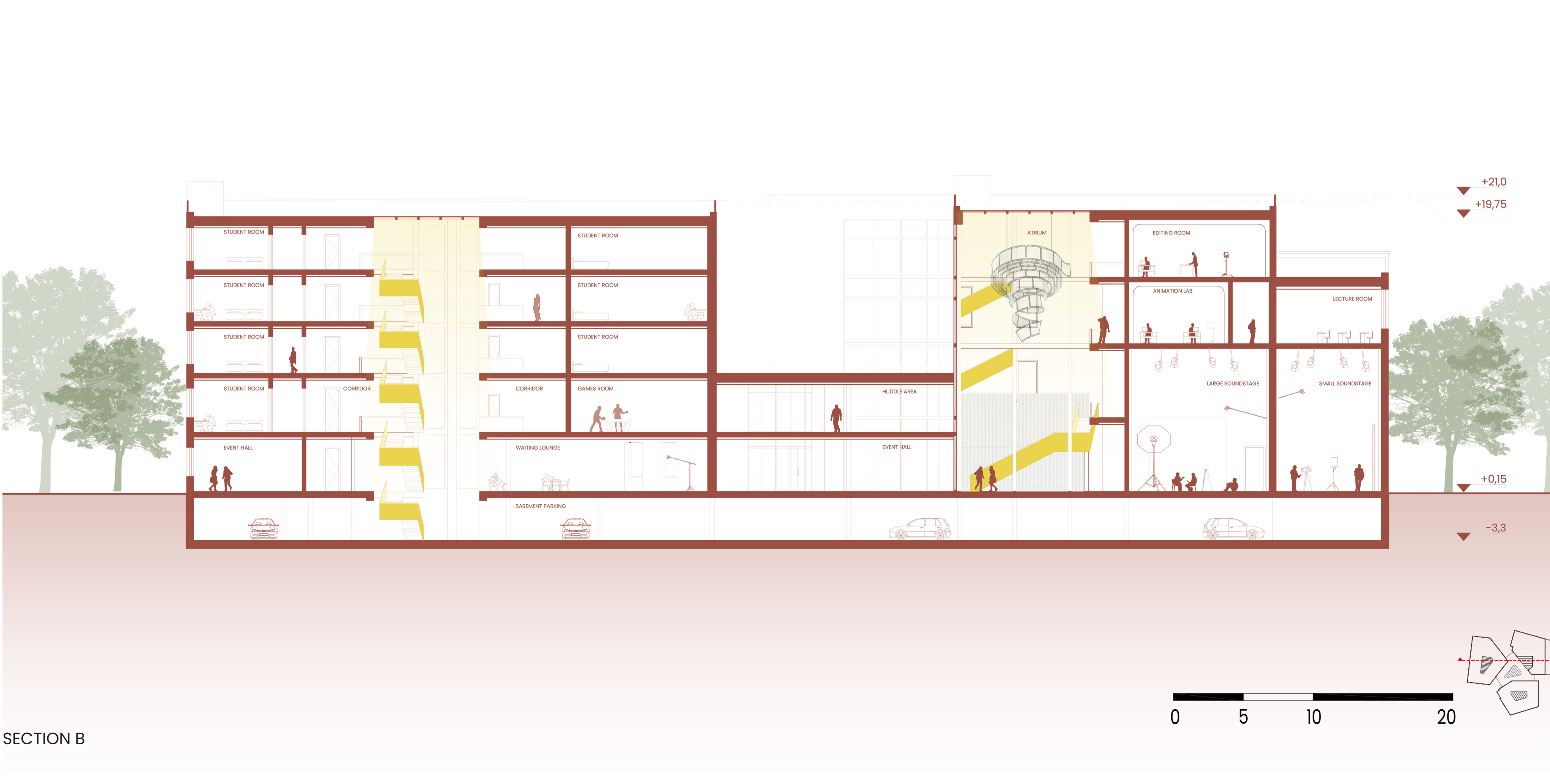
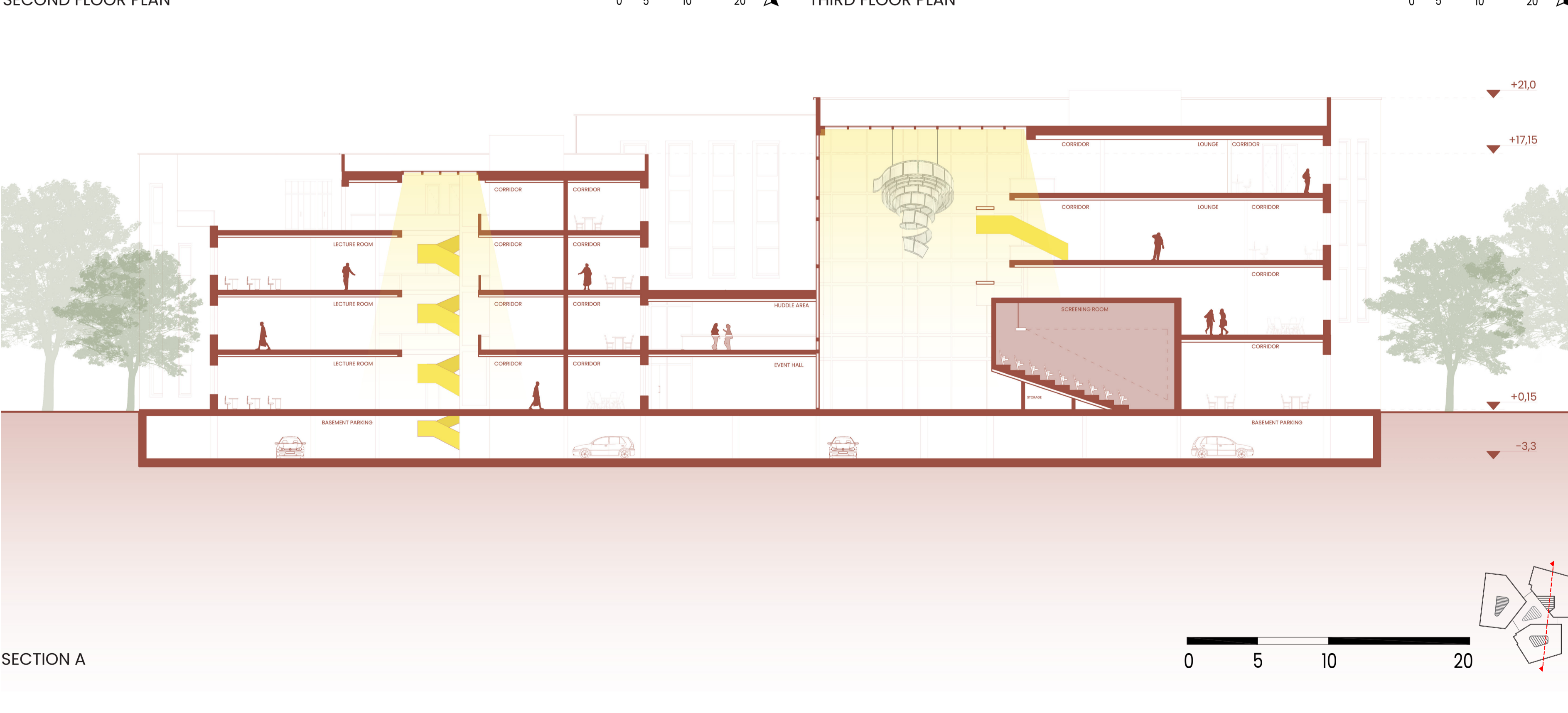
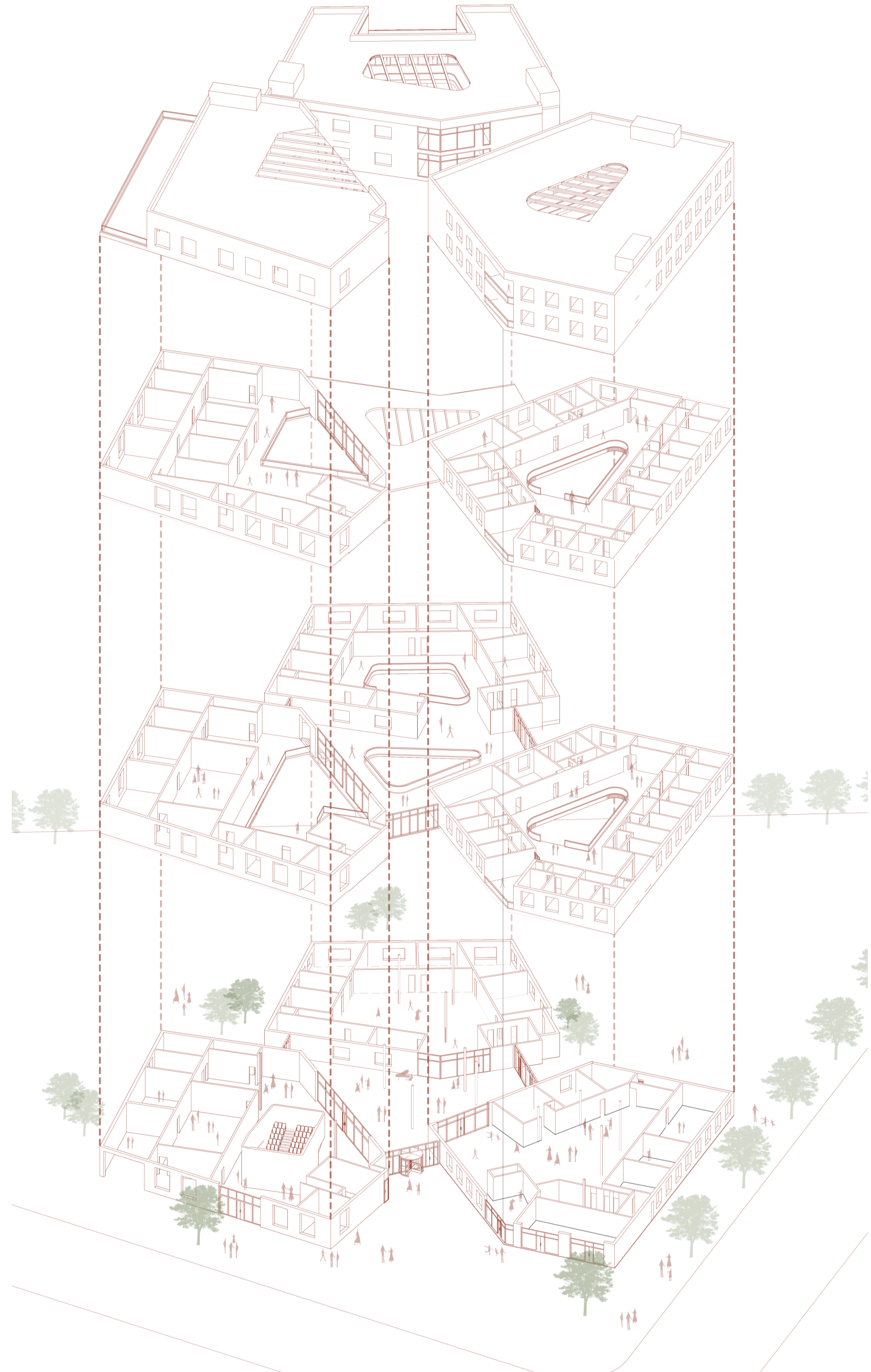
Different departments have been located in each block providing a sense of privacy while being connected with a central atrium. The classrooms overlook the river with the amazing views, library and film store towards the street for easy pedestrian access and screening room in the block adjacent to Jateční street. Beyond its primary function as an educational institution, the film school is envisioned as a cultural hub for Holešovice with functions like outdoor cinema, screening room, film store and cafeterias to encourage interaction between students, professionals and local community.



**FACULTY OF ARCHITECTURE CTU IN PRAGUE** ATELIER KRÁTKÝ-MARQUES, LS 2023-2024  
CTU PRAGUE, DEPARTMENT OF ARCHITECTURAL DESIGN III

**FILM SCHOOL, HOLEŠOVICE**  
DIPLOMA PROJECT

AUTHOR : SHEETAL JANGID  
DIPLOMA ADVISOR : ING. ARCH. VLADIMÍR KRÁTKÝ  
ING. ARCH. LUIS MARQUES



The proposed film school design draws inspiration from the site's geometric shape. The building consists of three triangular blocks with different functions. Production Block houses soundstages and recording rooms. The Educational Block features lecture halls, classrooms, offices, and a library, promoting flexible learning. The Community Block includes a menza, recreational spaces and dorm rooms fostering engagement and networking. A central atrium, the heart of the design, connects the three blocks and serves as a communal hub for collaboration, filled with natural light. The triangular layout ensures seamless transitions between indoor and outdoor spaces, enhancing interaction. This design harmonizes form and function, creating an innovative, sustainable, and collaborative educational facility.

- Development
- Recreational
- Housing
- Pre-Production
- Production